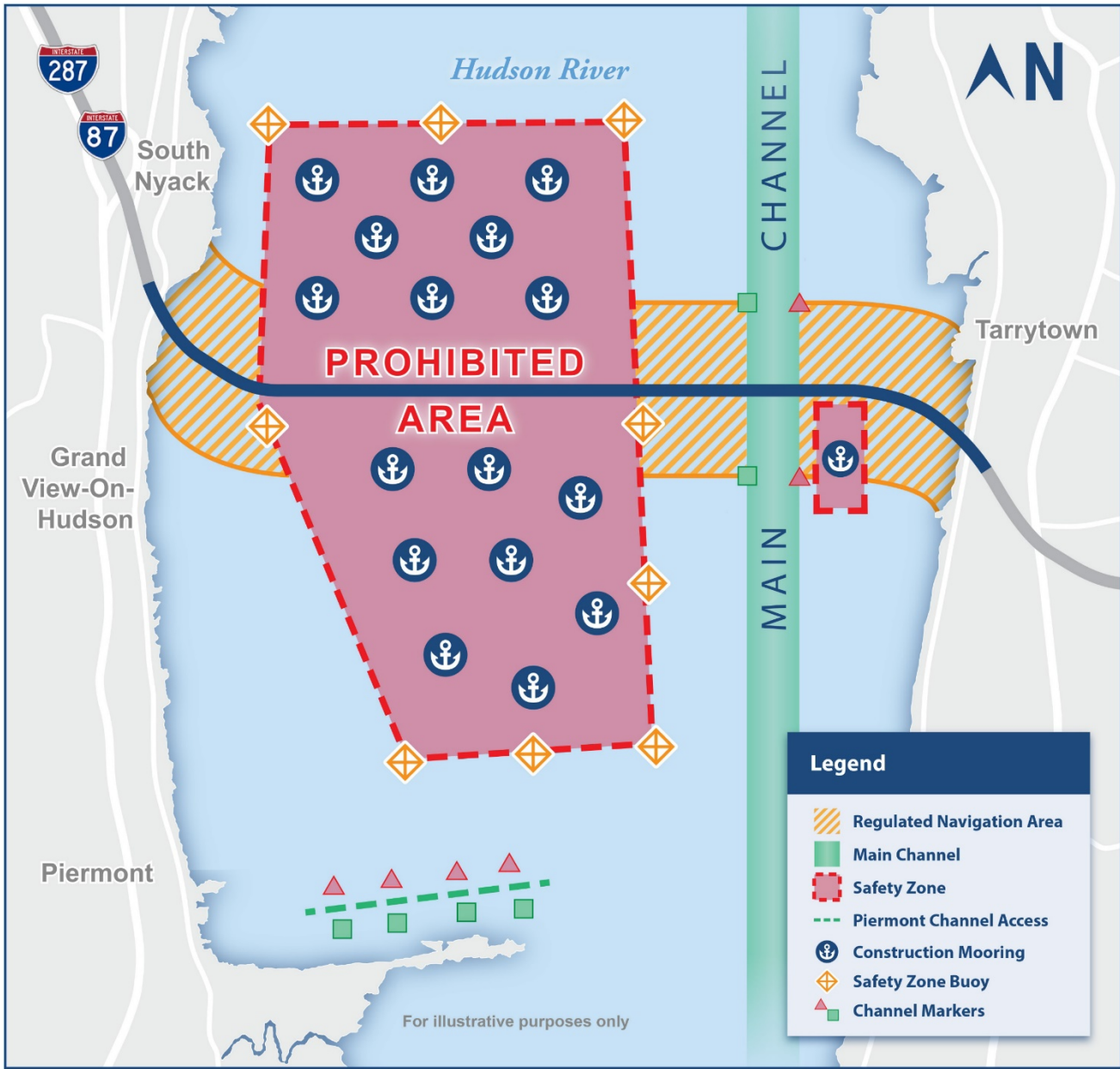




Boater Safety Information



- Stay clear of all overhead work.
- Only use the 600-foot wide **Main Channel** to navigate north or south with no wake at a maximum speed of five knots.
- Keep away from all bridge piers.
- Lighted buoys mark the **Safety Zone** and Construction Mooring locations.
- View GPS-tracked construction vessel locations on NewNYBridge.com/Boater.

- **Regulated Navigation Areas (RNAs)** stretch 500 yards north and 500 yards south of the existing bridge. Do not stop or loiter.
- Vessels should depart and approach the Tarrytown shoreline (**Eastern RNA**) to and from the north. Mariners should stay clear of the bridge landing near Rockland (**Western RNA**).
- Tune to **Marine Radio Channel 22A** for the latest U.S. Coast Guard advisories or call 914.789.3224. Communicate with Tappan Zee Constructors via **Marine Radio Channel 16**.

The New York State Thruway Authority provides this information as a public service. Any reliance you place on such information is therefore strictly at your own risk. Nothing in these guidelines shall supersede the actual construction conditions, and regulations set forth by the U.S. Coast Guard.

