



# Fact Sheet

## *Dismantling the Old Bridge*

Tappan Zee Constructors (TZC) has begun dismantling and removing the Tappan Zee Bridge.

TZC's efforts primarily involve cutting and dividing sections of steel and concrete into manageable sections. TZC then uses barge-based cranes, including the project's super crane, to remove these sections and place them on floating barges for transportation.



Dismantling operations began at the Rockland and Westchester landings in October 2017, after all traffic was transferred to the first span of the new Governor Mario M. Cuomo Bridge. Noise abatement measures, including temporary noise barriers, were implemented. TZC continues to monitor noise and vibration levels as work continues.

By winter of 2017, TZC completed dismantling steel above River Road and the old bridge's abutment in Rockland County, with work progressing further away from the shoreline toward the middle of the Hudson River. TZC also used the *Lift NY* super crane to remove steel above Metro-North Railroad's Hudson Line in Westchester County (pictured below).

TZC's demolition plan for 2018 includes:

- Lowering the main span steel cage via hydraulic jacks
- Dismantling steel truss sections
- Removing piles, piers, caissons and foundation material below the bottom of the Hudson River

Many concrete materials and steel trusses will be repurposed or recycled. The New York State Thruway Authority will also provide 135 concrete deck panels units, each approximately 13 feet wide by 50 feet long, to nearly a dozen state and local municipalities to be repurposed for other bridges and roadways.

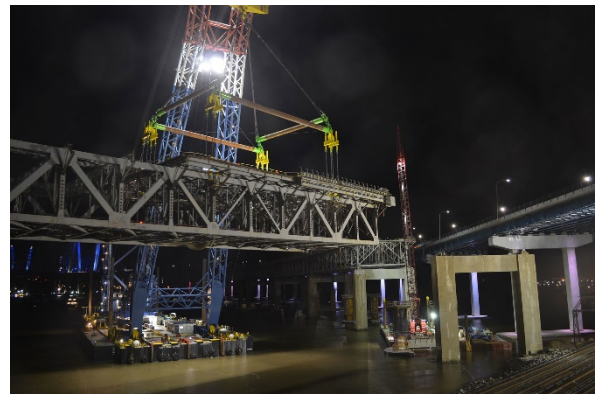
The dismantling of the old bridge will allow TZC to connect the second span of the Governor Mario M. Cuomo Bridge to land at both shores this year.

---

### DEMOLITION – BY THE NUMBERS

TZC WILL REMOVE:

- 302,200 tons of concrete
- 46,790 tons of steel
- 13,192 timber foundation piles
- More than 2,000 precast deck panels
- 196 piers
- 30 circular caissons (solid concrete cylinders)
- 20 steel truss sections
- 8 rectangular caissons (hollow concrete boxes)



[All construction activities and schedules are subject to change.](#)

All material provided is intended for educational or informational purposes only and may not be digitally altered, reproduced or republished without prior consent of the New York State Thruway Authority.

**FOR MORE INFORMATION, CONTACT:**

Khurram Saeed – Director of Communications – 914.524.5444 – [khurram.saeed@newnybridge.com](mailto:khurram.saeed@newnybridge.com)

