

Appendix A: Parking Demand Study



Environmental and Planning Consultants

440 Park Avenue South
7th Floor
New York, NY 10016
tel: 212 696-0670
fax: 212 213-3191
www.akrf.com

Technical Memorandum

To: Peter Sanderson, Project Director
From: Michael Beattie, PE, PTOE
Date: August 29, 2014
Re: NNYB - SUP Visitor Parking Demand
cc: George Paschalis, Brian Conybeare, David Paget, Robert Conway, Mei Mei Lee, Steven Gates, Anthony Russo, Kristine Edwards, Peter Casper, David Capobianco

EXECUTIVE SUMMARY

In response to public interest, the New York State Thruway Authority (NYSTA) is proposing to accommodate recreational visitors of the New New York Bridge's (NNYB)'s shared-use bicycle and pedestrian path (SUP) with parking and limited facilities. This memorandum presents AKRF's estimate of the parking demand associated with the SUP, which would be a 12-foot-wide path along the full extent of the northern bridge structure. There are limited resources and documentation on how to estimate parking demand generated by SUP facilities on bridges; thus, there is no standard methodology for approaching this task. As such, in order to provide a comprehensive parking demand estimate, the following methodology was developed and implemented:

- Step 1: Conduct document review of studies for existing bridges with SUP facilities
- Step 2: Collect in-person surveys and visitation counts at existing bridge and park facilities in the Hudson Valley region and at bridges with SUP facilities in other parts of the country
- Step 3: Identify catchment areas and percent of population visiting, as well as modal splits, associated with the surveyed locations based on data collected in Step 2
- Step 4: Develop hourly visitation estimates for the NNYB using different catchment areas based on data from Step 3
- Step 5: Apply appropriate modal splits to hourly visitation estimates to develop parking demand estimates

These steps are described in further detail below. Based on the analysis, it was estimated that potential visitation to the NNYB would result in the demand for 151 parking spaces (97 on the east side of the bridge and 54 on the west side bridge).

DOCUMENT REVIEW

Prior to estimating the parking demand for the NNYB, research was conducted to identify existing bridges with SUP facilities and documentation on parking demand associated with these locations. There were three facilities that were identified for this task due to their relatively similar environment and/or operational characteristics with the proposed NNYB SUP:

- the San Francisco-Oakland Bay Bridge in California;
- the Woodrow Wilson Bridge in Washington, DC; and
- the Cooper River Bridge in South Carolina.

The agencies overseeing these locations were contacted for any background documentation related to designated parking provisions; however, there was no documentation available for the Woodrow Wilson and Cooper River Bridges regarding the parking demand for the SUP. Only the San Francisco-Oakland Bay Bridge in California had limited documentation associated with parking for the SUP facility.

Similar to the proposed NNYB, the San Francisco-Oakland Bay Bridge provided an SUP for pedestrians and bicyclists. This pathway is 15.5 feet wide providing one lane in each direction for bicyclists and an outside lane designated for walkers, all at a two percent grade. Currently, the biking and pedestrian paths serve only recreational purposes and are not a transportation facility because the shared-use path spans only half of the bridge. Along this pathway, visitors can enjoy the viewsheds through the use of benches and lookout areas. The environmental impact study for the San Francisco-Oakland Bay Bridge did not provide a methodology for estimating the parking demand for the SUP, only stating “Other land uses in the touchdown area have ‘informal’ parking areas because the land is open and flat. In addition, under BCDC Permit 11-93, Caltrans is required to provide six parking spaces on the south side of the Oakland Touchdown for use by visitors to the view lookout areas.”¹ Given the access to informal parking, it was decided that the six formal parking spaces required for this path should not be accounted for in the development of the NNYB parking demand.

IN-PERSON SURVEYS AND DATA COLLECTION

Since there is limited supporting data in the development of parking demand estimates for an SUP, the parking demand estimates for the NNYB were based on in-person surveys (both in the Hudson Valley region and around the country) described below. Of the locations listed above, the Woodrow Wilson and the Cooper River Bridges were surveyed. At the time of this study, the San Francisco-Oakland Bay Bridge SUP facility was not completed; therefore, surveys were not conducted at this location.

With limited guidance on developing parking demand estimates at SUP facilities and limited documentation at existing SUP facilities, in-person surveys were conducted to develop visitation characteristics at existing facilities that could be applied to the NNYB. Existing facilities included recreational areas in the Hudson Valley as well as SUPs in the Hudson Valley and other parts of the country. These facilities exhibited characteristics similar to the proposed NNYB SUP or represent similar potential users of the proposed NNYB SUP. The in-person survey (see **Attachment A**) was developed to capture how far visitors were traveling to reach the recreational destinations (based on originating zip codes) and how visitors arrived to the destination (such as by car, public transit, walking/biking, etc). In addition to the in-person surveys, the total number of pedestrians and bicyclists at each facility were also collected. The data collected was used in the following manner:

- Originating zip codes were used to establish a catchment area for each facility.
- Total visitation was compared to the total population for each catchment area to develop the percent of the population visiting each facility.

¹ <http://www.dot.ca.gov/dist4/sfobb/Affected%20Environment.html#326>

- A catchment area for potential visitors to the NNYB was determined based on the catchment areas from the reference SUPs.
- Modal splits (i.e., automobile, bicycle, transit, etc.) from the surveys were used to determine the percentage of visitors that drive to the surveyed facilities. This auto modal split was applied to the visitation estimates for the NNYB in order to determine the number of visitors potentially driving to and parking at the NNYB.

HUDSON VALLEY REGION

In-person surveys of existing visitors at the Hudson Valley region recreational areas and bridges were conducted in May 2014. Users of these facilities (which include biking and/or walking trails or paths) would likely represent users that would be accessing the proposed NNYB SUP. To capture peak usage, surveys were conducted during a weekend day of nice weather from 8:00 AM to 4:00 PM. The surveys were performed at the following eight locations in the Hudson Valley:

- Esposito Trail (Nyack) – The Esposito Trail is a one mile-long trail that connects to other trails along the Hudson River. No designated parking is provided. Similar to the NNYB, the Esposito Trail provides a shared-use path for pedestrians and bicyclists. Pedestrian and bicyclist counts and surveys were collected at the Esposito Trail entrance located at the corner of Cedar Hill Avenue and South Franklin Street. In addition to collecting the total number of pedestrians and bicyclists, 32 in-person surveys were collected.
- RiverWalk Park (Tarrytown) – RiverWalk is a planned 51.5-mile multi-faceted pathway paralleling the Hudson River in Westchester, of which 32.9 miles are completed. Parking is provided at Pierson Park. Pedestrian and bicyclist counts and surveys were collected at the entrance to RiverWalk at Pierson Park. In addition to collecting the total number of pedestrians and bicyclists, 112 in-person surveys were collected.
- Walkway Over the Hudson State Historic Park (Poughkeepsie) – The Walkway Over the Hudson State Historic Park is a linear walkway spanning the Hudson River. At 212 feet tall and 1.28 miles long, it is the longest, elevated pedestrian bridge in the world. The Walkway Over the Hudson provides a path for pedestrians and bicyclists and provides several amenities (picnic benches, bathroom, and views of the Hudson River). Dedicated parking lots are provided at both ends of the bridge. Pedestrian and bicyclist counts and surveys were collected at the east end of the bridge. In addition to collecting the total number of pedestrians and bicyclists, 169 in-person surveys were collected.
- Rockland Lake State Park (Valley Cottage) – Rockland Lake State Park provides a multitude of amenities, including bathrooms, hiking trails, and picnic tables. Dedicated parking lots are provided. Pedestrian and bicyclist counts and surveys were collected at the entrances located at the north and south parking lots. In addition to collecting the total number of pedestrians and bicyclists, 52 in-person surveys were collected.
- Nyack Beach State Park (Upper Nyack) – Nyack Beach State Park is a 76-acre state park with a two-mile riverfront pathway. Dedicated parking is provided. Pedestrian and bicyclist counts and surveys were collected at the entrance on North Broadway Avenue. In addition to collecting the total number of pedestrians and bicyclists, 58 in-person surveys were collected.
- Bear Mountain Bridge (Cortlandt) – The Bear Mountain Bridge provides a half-mile pedestrian walkway on the south side of the bridge. Bicyclists wishing to use the walkway must walk their bicycles. A dedicated parking lot is located on the west end of the bridge. Pedestrian and bicyclist counts and surveys were collected at the entrance to the pedestrian walkway at the west end of the bridge. In addition to collecting the total number of pedestrians and bicyclists, 18 in-person surveys were collected.

- Newburgh–Beacon Bridge (Newburgh) – The Newburgh Beacon Bridge provides a 1.5-mile SUP on the south side of the bridge. Dedicated parking lots are located on both ends of the bridge. Pedestrian and bicyclist counts and surveys were collected at the entrance to the SUP at the east end of the bridge. In addition to collecting the total number of pedestrians and bicyclists, 26 in-person surveys were collected.
- Rip Van Winkle Bridge (Hudson) – The Rip Van Winkle Bridge provides a one-mile long pedestrian walkway on the south side of the bridge. Bicyclists wishing to use the walkway must walk their bicycles. A dedicated parking lot is located on the west end of the bridge. Pedestrian and bicyclist counts and surveys were collected at the entrance to the pedestrian walkway at the west end of the bridge. In addition to collecting the total number of pedestrians and bicyclists, 26 in-person surveys were collected.

A summary of the in-person surveys and data collection is presented in **Table 1**. Visitors' points of origin (discussed further below) are depicted graphically in **Attachment B**, and the complete survey results are provided in **Attachment C**.

As shown in **Table 1**, there is a wide range in the auto modal splits, as low as 15 percent and as high at 88 percent with an average auto split of 71 percent when combining the data from all eight locations. In addition, the average auto occupancy rate is 1.85 passengers per vehicle.

Surveyed visitors were also asked for their point of origin based on zip codes. The attached figures present the origin zip codes for each surveyed location. These zip codes were used to establish a radius for a catchment area to determine the percentage of population within that catchment area that visited each location. Populations were based on 2010 Decennial Census data and calculated using GIS. The catchment areas and visiting populations were then used to develop a catchment area and potential visitation for the NNYB. **Table 2** presents the total population within each catchment area and the average hourly visitation levels.

Table 1

In-Person Surveys and Data Collection Summary – Hudson Valley Region

Location	In Person Surveys				Pedestrians		Bicyclists	
	Mode	Number	Percent	Auto Occupancy	Total	Average per Hour	Total	Average per Hour
Esposito Trail	Auto	10	31%	1.50	77	10	18	2
	Taxi	0	0%					
	Bus	0	0%					
	Rail	0	0%					
	Walk/Bike	22	69%					
	Total	32	100%					
RiverWalk Park	Auto	68	61%	1.49	416	55	2	0
	Taxi	0	0%					
	Bus	0	0%					
	Rail	0	0%					
	Walk/Bike	44	39%					
	Total	112	100%					
Walkway over the Hudson	Auto	134	79%	1.94	1,114	154	201	28
	Taxi	0	0%					
	Bus	1	1%					
	Rail	1	1%					
	Walk/Bike	33	20%					
	Total	169	100%					
Rockland Lake State Park	Auto	46	88%	1.96	1,819	227	172	22
	Taxi	0	0%					
	Bus	1	2%					
	Rail	0	0%					
	Walk/Bike	5	10%					
	Total	52	100%					
Nyack Beach State Park	Auto	49	84%	2.00	78	10	142	18
	Taxi	0	0%					
	Bus	0	0%					
	Rail	0	0%					
	Walk/Bike	9	16%					
	Total	58	100%					
Bear Mountain Bridge	Auto	15	83%	2.29	137	17	78	10
	Taxi	0	0%					
	Bus	0	0%					
	Rail	0	0%					
	Walk/Bike	3	17%					
	Total	18	100%					
Newburgh – Beacon Bridge	Auto	11	42%	2.00	88	11	61	8
	Taxi	0	0%					
	Bus	0	0%					
	Rail	0	0%					
	Walk/Bike	15	58%					
	Total	26	100%					
Rip Van Winkle Bridge	Auto	4	15%	1.25	58	7	2	0
	Taxi	0	0%					
	Bus	0	0%					
	Rail	0	0%					
	Walk/Bike	22	85%					
	Total	26	100%					
Total	Auto	269	71%	1.85				
	Taxi	0	0%					
	Bus	2	1%					
	Rail	1	0%					
	Walk/Bike	109	29%					
	Total	381	100%					

Table 2
Catchment Area Population

Location	Catchment Area		Average Hourly Visitation	Percent of Population
	Radius ¹	Population ²		
Esposito Trail	2 miles	15,261	12	0.08%
RiverWalk Park	9 miles	437,727	55	0.013%
Walkway over the Hudson	20 miles	514,015	182	0.035%
Rockland Lake State Park	8 miles	331,990	249	0.075%
Nyack Beach State Park	12 miles	584,887	28	0.005%
Newburgh – Beacon Bridge	20 miles	715,043	19	0.003%
Rip Van Winkle Bridge	25 miles	245,383	7	0.003%
Average	13.7 miles	406,329	79	0.019%
Notes: No zip codes were given for the Bear Mountain Bridge surveys. 1. Based on zip codes from in-person surveys (see attached graphics). 2. Population existing with radius of catchment area developed for each location.				

ADDITIONAL EXISTING SUP FACILITIES

In addition to collecting in-person surveys at locations near the Tappan Zee Bridge or within the Hudson Valley region, surveys were also collected during the last two weekends in June at several bridges with similar shared bicycle and pedestrian paths in similar metropolitan environments. These surveys were conducted at the following three locations:

- George Washington Bridge, New York/New Jersey (1.2 miles) – In addition to collecting the total number of pedestrians and bicyclists, 54 in-person surveys were collected.
- Woodrow Wilson Bridge, Washington DC (1.4 miles) – In addition to collecting the total number of pedestrians and bicyclists, 132 in-person surveys were collected.
- Cooper River Bridge, South Carolina (2.4 miles) – In addition to collecting the total number of pedestrians and bicyclists, eight in-person surveys were collected.

As with the surveys for the Hudson Valley region described earlier, surveys for the above referenced locations were collected from 8:00 AM – 4:00 PM on a weekend day with nice weather. **Table 3** presents the modal splits and hourly visitation at each of these locations. It should be noted that a majority of those surveyed were pedestrians, as bicyclists usually did not stop to take a survey. However, it was observed that bicyclists did not use an auto to get to the bridge but traversed the bridge as part of a longer ride, thus not contributing to the parking demand.

The George Washington Bridge was predominately used by bicyclists throughout the day. A majority (61 percent) of those surveyed arrived by walking to the bridge while 26 percent of surveyed population arrived by auto. Low auto usage can be attributed to:

- Its location: within high populations centers of New York City and adjacent areas of New Jersey and
- Its accessibility: easily accessible by walking and public transit.

The Woodrow Wilson Bridge experienced more pedestrians than bicyclists. The majority of the surveyed population arrived by auto (73 percent). It should be noted that the Woodrow Wilson Bridge is adjacent to a popular park (Jones Point Park, in the city of Alexandria, Virginia on the west side of the Potomac River) and the Tanger Outlets, located on the east side of the Potomac River in Oxon Hill in Prince George's County, Maryland. Visitors of the SUP used these parking areas to access the bridge. The Cooper River Bridge has a similar user profile as the Woodrow Wilson Bridge, however; only eight visitors opted to take the survey, resulting in too small a sample size to extrapolate modal splits.

Given the low auto use at the George Washington Bridge and the negligible number of surveys obtained at the Cooper River Bridge, only the modal split and visitation information from the Woodrow Wilson Bridge was used in determining the parking demand.

Table 3

In-Person Surveys and Data Collection Summary - Additional SUP Facilities

Location	In Person Surveys				Pedestrians		Bicyclists	
	Mode	Number	Percent	Auto Occupancy	Total	Average per Hour	Total	Average per Hour
George Washington Bridge	Auto	14	26%	2.21	222	28	1,549	194
	Taxi	1	2%					
	Bus	5	9%					
	Rail	1	2%					
	Walk/Bike	33	61%					
	Total	54	100%					
Woodrow Wilson Bridge	Auto	96	73%	1.88	444	56	293	40
	Taxi	1	1%					
	Bus	0	0%					
	Rail	0	0%					
	Walk/Bike	35	26%					
	Total	132	100%					
Cooper River Bridge	Auto	N/A (Only 8 Surveys Collected)			539	77	166	24
	Taxi							
	Bus							
	Rail							
	Walk/Bike							
	Total							

PARKING ESTIMATION

In order to estimate a range for the parking demand associated with potential visitors to the NNYB, the following steps were conducted:

- Develop a range of estimated hourly visitation to the NNYB based on different catchment areas.
- Of the total estimated hourly visitation, determine the number of pedestrian visitors, as many of the bicyclists would not drive and park at the facility, but instead traverse the bridge as part of a longer ride.
- Apply the auto modal and split auto occupancy from the in-person surveys to the estimated pedestrian hourly visitation to determine the potential number of vehicles that would need to park each hour.

As presented in **Table 2**, the catchment areas for the Hudson Valley surveys range from two to 25 miles. Based on these data, three different catchment areas were established to develop a low, medium, and high parking estimates for the NNYB SUP, with the assumption that the larger the catchment area, the higher the visitation. Since the NNYB SUP with limited facilities is expected to draw from a larger area than the Esposito Trail (two miles), a small catchment area was not established and analyzed. Therefore, the following low, medium, and high visitation catchment areas were used:

- **10 Mile Catchment Area (Low estimate)** – Three of the Hudson Valley region locations had catchment areas close to 10 miles: RiverWalk Park, Rockland Lake State Park, and Nyack Beach State Park. Of these, RiverWalk and Nyack Beach State Park had the lower percent of population visiting; however, RiverWalk also had the lowest auto modal split at 61 percent. Therefore, the RiverWalk surveys were used to develop the low parking demand estimate.

- **15 Mile Catchment Area (Medium estimate)** – The average catchment radius for all the Hudson Valley region surveys was 13.7 miles. Since this is close to the 15 mile catchment area used to develop a medium parking demand estimate, the average of the Hudson Valley region survey results were used, with the percent of population visiting at 0.019 percent and an auto split of 71 percent.
- **20 Mile Catchment Area (High estimate)** – Three of the Hudson Valley region locations had catchment areas close to 20 miles: the Walkway Over the Hudson, the Newburgh-Beacon Bridge, and the Rip Van Winkle Bridge. While the Rip Van Winkle Bridge has a large catchment area (25 miles), it is located in a lower population density area with lower visitation rates. In order to establish a more conservative parking estimate for the NNYB SUP, survey results from the Walkway Over the Hudson were used since it had the highest percent of population visiting (0.035 percent) and the highest auto split at 79 percent.

Table 4 presents the hourly visitation estimates assuming a 10 mile-, 15 mile-, and 20-mile radius catchment area based on the surveys collected above. As shown, the hourly visitation estimates (for both bicyclists and pedestrians) range from 111 visitors (based on the RiverWalk Park surveys) to 1,761 visitors (based on the Walkway Over the Hudson surveys, a high visitation number which is a characteristic typically associated with a major destination).

Table 4
NNYB Hourly Visitation Estimates

Catchment Area	Population in Catchment Area			Percent Visiting	Hourly Visitation		
	East Side	West Side	Total		East Side	West Side	Total
10 Miles ¹	486,190	401,581	887,771	0.013% ¹	61	50	111
15 Miles ²	1,571,893	866,128	2,438,021	0.019% ²	305	168	473
20 Miles ³	3,318,648	1,655,578	4,974,226	0.035% ³	1,175	586	1,761
Notes: Population based on 2010 Decennial Census 1. Based on RiverWalk surveys 2. Based on average Hudson Valley region surveys 3. Based on Walkway Over the Hudson surveys							

Based on observations at the reference project sites, bicyclists would likely not drive and park at the bridge. Therefore, pedestrian visitation estimates were developed and used to estimate the parking demand. Based on the surveys collected above, and summarized in **Table 5**, 81 percent of the users would be classified as pedestrians. **Table 6** presents the hourly pedestrian visitation levels and associated parking demand. As shown, the number of parking spaces that would be required ranges from 29 to 606 spaces.

Table 5
Total Pedestrian and Bicycle Visitation

Location	Pedestrians	Bicyclists	% Pedestrian
Esposito Trail	77	18	81%
RiverWalk Park	416	2	99%
Walkway over the Hudson	1,114	201	85%
Rockland Lake State Park	1,819	172	91%
Nyack Beach State Park	78	142	35%
Bear Mountain Bridge	137	78	64%
Newburgh – Beacon Bridge	88	61	59%
Rip Van Winkle Bridge	58	2	97%
Woodrow Wilson Bridge	444	293	60%
Cooper River Bridge	539	166	76%
Overall	4,770	1,135	81%

Table 6
NNYB Hourly Parking Estimates

Catchment Area	Pedestrian Hourly Visitation ¹			Auto Modal Split	Auto Occupancy ²	Hourly Parking Demand ³		
	East Side	West Side	Total			East Side	West Side	Total
10 Miles	49	40	89	61% ⁴	1.85	16	13	29
15 Miles	246	136	382	73% ⁵	1.85	97	54	151
20 Miles	949	473	1,422	79% ⁶	1.85	404	202	606

Notes:

1. Applied a 19% reduction from hourly visitation in Table 4 to remove bicyclists since Table 5 indicated 81% of visitors were pedestrians.
2. From Hudson Valley region in-person surveys
3. Hourly Parking Demand = (Hourly Visitation * Modal Split) / Auto Occupancy
4. Based on RiverWalk surveys
5. The average from the Hudson Valley region surveys resulted in 71% auto split. The surveys from the Woodrow Wilson Bridge resulted in a 73% auto split. Since both produced a similar auto split, the 73% auto split from the Woodrow Wilson Bridge was used to develop a slightly more conservative parking estimate.
6. Based on Walkway Over the Hudson

As mentioned above, the high end number is using the assumption that the NNYB SUP would have a similar attraction as the Walkway Over the Hudson, which is designed as a pedestrian and bicycle destination with amenities including a wide travel path and no vehicles in adjacent lanes. However, the NNYB SUP would provide for alternative non-motorized transportation across the Hudson River between Rockland and Westchester Counties, would be substantially longer at approximately 3.1 miles as compared to the Walkway Over the Hudson's 1.2 miles, and would be adjacent to four lanes of vehicular traffic that is part of a regional interstate highway system. Thus, it would be reasonable to conclude that visitation levels and catchment area of the NNYB SUP would not reflect the visitation levels observed at the Walkway Over the Hudson, but instead would more likely resemble the characteristics of some of the other local locations surveyed and the Woodrow Wilson Bridge.

Therefore, an estimate of parking spaces should be based on the 10 mile- and 15 mile-radius catchment areas. As shown in **Table 4** above, the 10-mile catchment area would expect to draw an hourly visitation of 111 users, while the 15-mile catchment area would expect to draw an hourly visitation of 473 users. Of these users, 81 percent would be expected to be pedestrians, 61 to 73 percent of which would arrive by auto, depending on the catchment area. Assuming 1.85 persons per auto, as discussed earlier, this would result in 29 parking spaces (16 on the east side, 13 on the west side) for a 10-mile catchment area and

151 parking spaces (97 on the east side and 54 on the west side) for a 15-mile catchment area. Based on the analysis above, the more conservative 151 parking space estimate is recommended.

Attachments:

- Attachment A: In-Person Survey Sample
- Attachment B: Maps of Zip Code Origins at Hudson Valley Region Survey Locations
- Attachment C: Survey Data

Attachment A: Tappan Zee Bridge SUP Survey

Attachment A **Tappan Zee Bridge SUP Survey**

Location: _____

DATE: _____

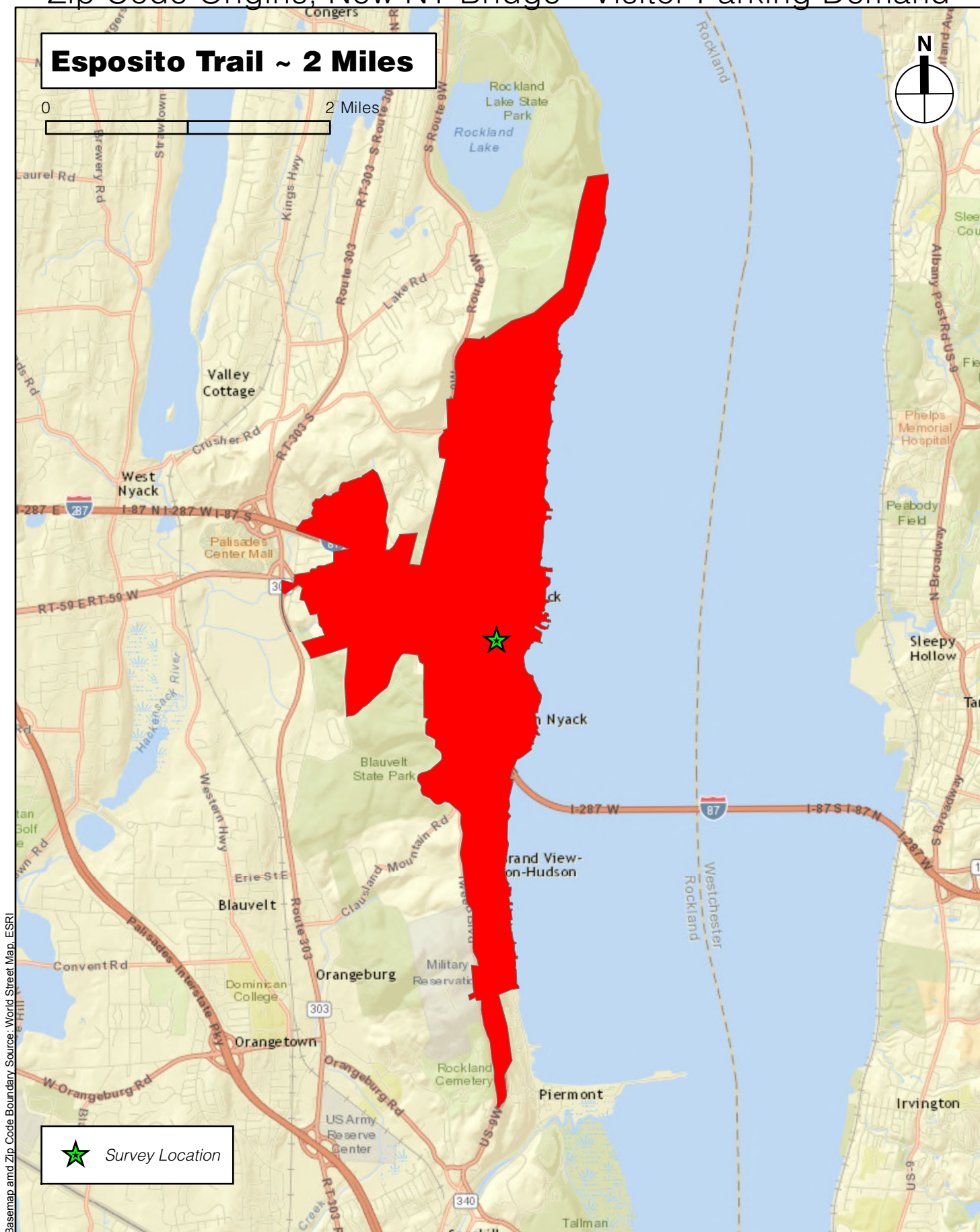
SURVEYOR: _____

We are conducting a transportation survey for the proposed Tappan Zee Bridge Shared-Use Path and would appreciate your time to answer a few questions. It should take only a minute.

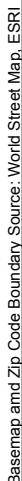
Time	1	2	3	4	5	6	7
	Where did your trip originate?	What did you take to get here?	If auto or taxi, how many people (including yourself) arrived together in the same vehicle?	If auto, where did you park?	What is the purpose(s) of your visit? (Check all that applies)	How much time do you plan to spend here?	Notes/Remarks
	Zip Code or Neighborhood: _____ <input type="checkbox"/> Home <input type="checkbox"/> Work <input type="checkbox"/> School/Shopping/Restaurant <input type="checkbox"/> Other Attractions Nearby <input type="checkbox"/> Other: _____	<input type="checkbox"/> Auto/Motorcycle <input type="checkbox"/> Taxi/Service Car <input type="checkbox"/> City Bus <input type="checkbox"/> Rail <input type="checkbox"/> Walk/Bike <input type="checkbox"/> Other: _____	<input type="checkbox"/> 1 <input type="checkbox"/> 2 <input type="checkbox"/> 3 <input type="checkbox"/> 4 <input type="checkbox"/> 5 <input type="checkbox"/> 6 <input type="checkbox"/> ____	<input type="checkbox"/> On-Street Nearby <input type="checkbox"/> On-Street Remotely <input type="checkbox"/> Garage/Lot Nearby <input type="checkbox"/> Garage/Lot Remotely <input type="checkbox"/> Dropped-off <input type="checkbox"/> Other: _____	<input type="checkbox"/> General Recreation <input type="checkbox"/> Bike Riding <input type="checkbox"/> Picnic <input type="checkbox"/> Event <input type="checkbox"/> Other: _____	<input type="checkbox"/> less than 1 hour <input type="checkbox"/> 1 - 2 hours <input type="checkbox"/> 2 - 3 hours <input type="checkbox"/> 3 - 4 hours <input type="checkbox"/> 4 or more hours	
	Zip Code or Neighborhood: _____ <input type="checkbox"/> Home <input type="checkbox"/> Work <input type="checkbox"/> School/Shopping/Restaurant <input type="checkbox"/> Other Attractions Nearby <input type="checkbox"/> Other: _____	<input type="checkbox"/> Auto/Motorcycle <input type="checkbox"/> Taxi/Service Car <input type="checkbox"/> City Bus <input type="checkbox"/> Subway/Rail <input type="checkbox"/> Walk/Bike <input type="checkbox"/> Other: _____	<input type="checkbox"/> 1 <input type="checkbox"/> 2 <input type="checkbox"/> 3 <input type="checkbox"/> 4 <input type="checkbox"/> 5 <input type="checkbox"/> 6 <input type="checkbox"/> ____	<input type="checkbox"/> On-Street Nearby <input type="checkbox"/> On-Street Remotely <input type="checkbox"/> Garage/Lot Nearby <input type="checkbox"/> Garage/Lot Remotely <input type="checkbox"/> Dropped-off <input type="checkbox"/> Other: _____	<input type="checkbox"/> General Recreation <input type="checkbox"/> Bike Riding <input type="checkbox"/> Picnic <input type="checkbox"/> Event <input type="checkbox"/> Other: _____	<input type="checkbox"/> less than 1 hour <input type="checkbox"/> 1 - 2 hours <input type="checkbox"/> 2 - 3 hours <input type="checkbox"/> 3 - 4 hours <input type="checkbox"/> 4 or more hours	
	Zip Code or Neighborhood: _____ <input type="checkbox"/> Home <input type="checkbox"/> Work <input type="checkbox"/> School/Shopping/Restaurant <input type="checkbox"/> Other Attractions Nearby <input type="checkbox"/> Other: _____	<input type="checkbox"/> Auto/Motorcycle <input type="checkbox"/> Taxi/Service Car <input type="checkbox"/> City Bus <input type="checkbox"/> Subway/Rail <input type="checkbox"/> Walk/Bike <input type="checkbox"/> Other: _____	<input type="checkbox"/> 1 <input type="checkbox"/> 2 <input type="checkbox"/> 3 <input type="checkbox"/> 4 <input type="checkbox"/> 5 <input type="checkbox"/> 6 <input type="checkbox"/> ____	<input type="checkbox"/> On-Street Nearby <input type="checkbox"/> On-Street Remotely <input type="checkbox"/> Garage/Lot Nearby <input type="checkbox"/> Garage/Lot Remotely <input type="checkbox"/> Dropped-off <input type="checkbox"/> Other: _____	<input type="checkbox"/> General Recreation <input type="checkbox"/> Bike Riding <input type="checkbox"/> Picnic <input type="checkbox"/> Event <input type="checkbox"/> Other: _____	<input type="checkbox"/> less than 1 hour <input type="checkbox"/> 1 - 2 hours <input type="checkbox"/> 2 - 3 hours <input type="checkbox"/> 3 - 4 hours <input type="checkbox"/> 4 or more hours	
	Zip Code or Neighborhood: _____ <input type="checkbox"/> Home <input type="checkbox"/> Work <input type="checkbox"/> School/Shopping/Restaurant <input type="checkbox"/> Other Attractions Nearby <input type="checkbox"/> Other: _____	<input type="checkbox"/> Auto/Motorcycle <input type="checkbox"/> Taxi/Service Car <input type="checkbox"/> City Bus <input type="checkbox"/> Subway/Rail <input type="checkbox"/> Walk/Bike <input type="checkbox"/> Other: _____	<input type="checkbox"/> 1 <input type="checkbox"/> 2 <input type="checkbox"/> 3 <input type="checkbox"/> 4 <input type="checkbox"/> 5 <input type="checkbox"/> 6 <input type="checkbox"/> ____	<input type="checkbox"/> On-Street Nearby <input type="checkbox"/> On-Street Remotely <input type="checkbox"/> Garage/Lot Nearby <input type="checkbox"/> Garage/Lot Remotely <input type="checkbox"/> Dropped-off <input type="checkbox"/> Other: _____	<input type="checkbox"/> General Recreation <input type="checkbox"/> Bike Riding <input type="checkbox"/> Picnic <input type="checkbox"/> Event <input type="checkbox"/> Other: _____	<input type="checkbox"/> less than 1 hour <input type="checkbox"/> 1 - 2 hours <input type="checkbox"/> 2 - 3 hours <input type="checkbox"/> 3 - 4 hours <input type="checkbox"/> 4 or more hours	

**Attachment B: Maps of Zip Code Origins at Hudson Valley Region
Survey Locations**

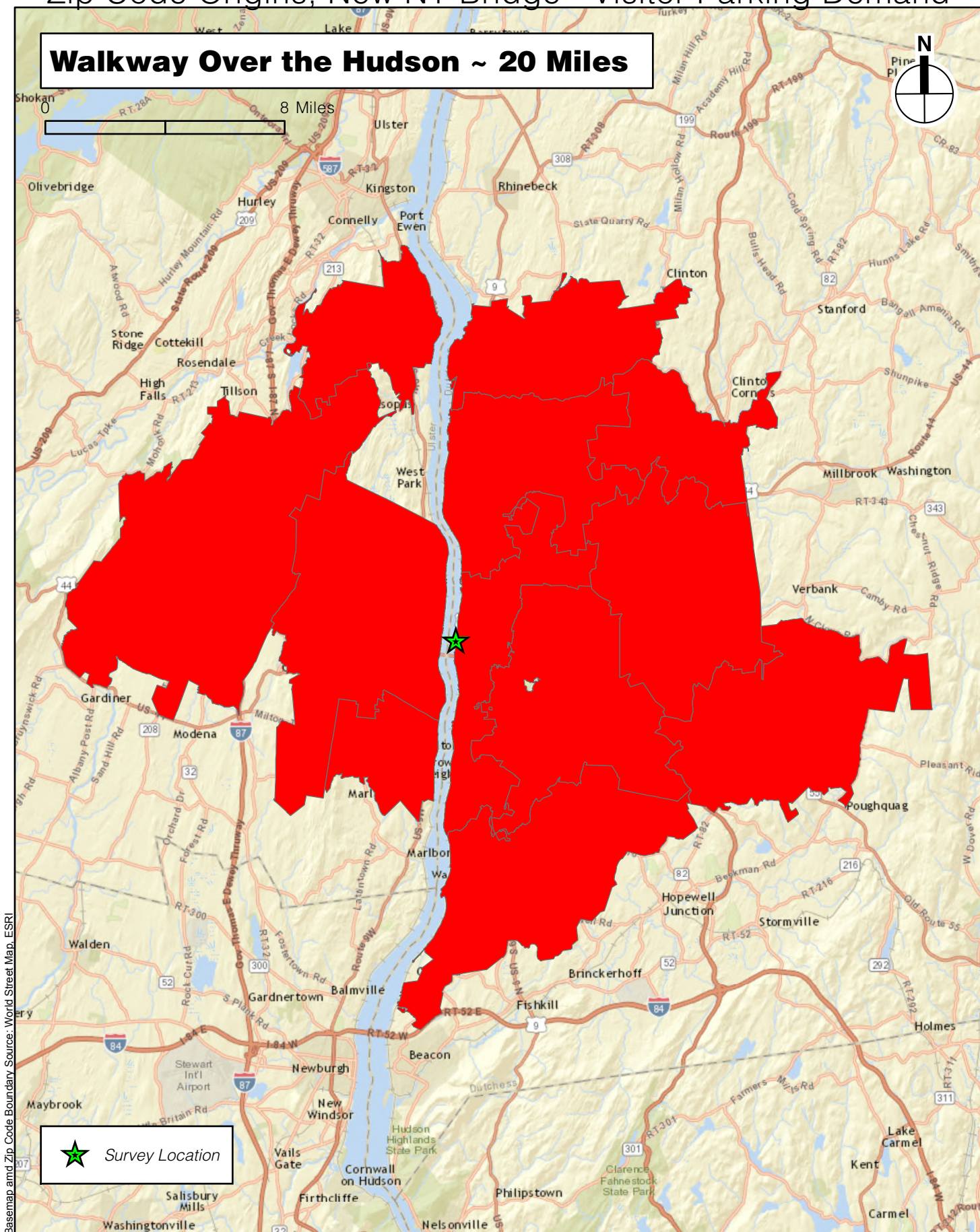
Zip Code Origins, New NY Bridge - Visitor Parking Demand



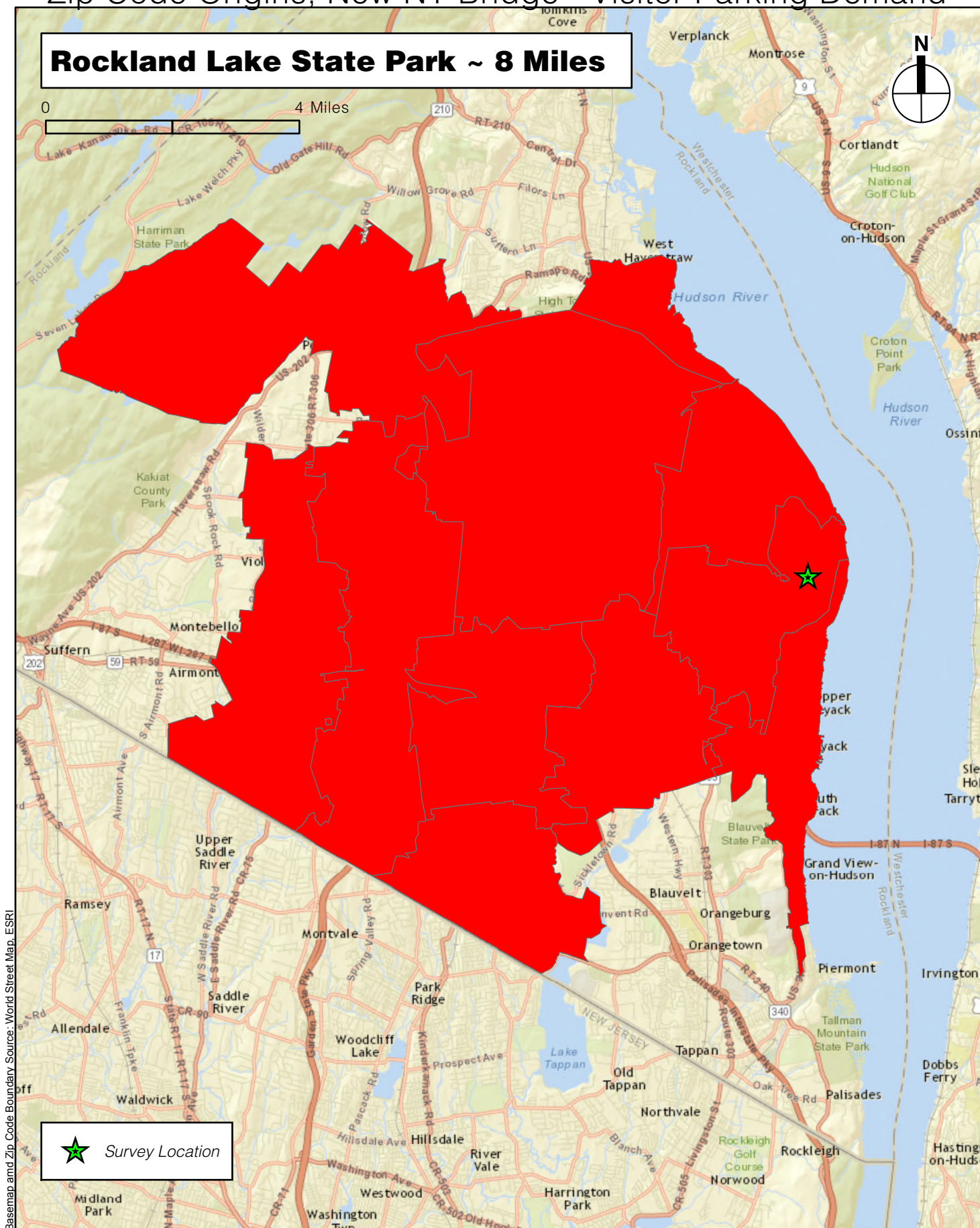
River Walk Park ~ 9 Miles



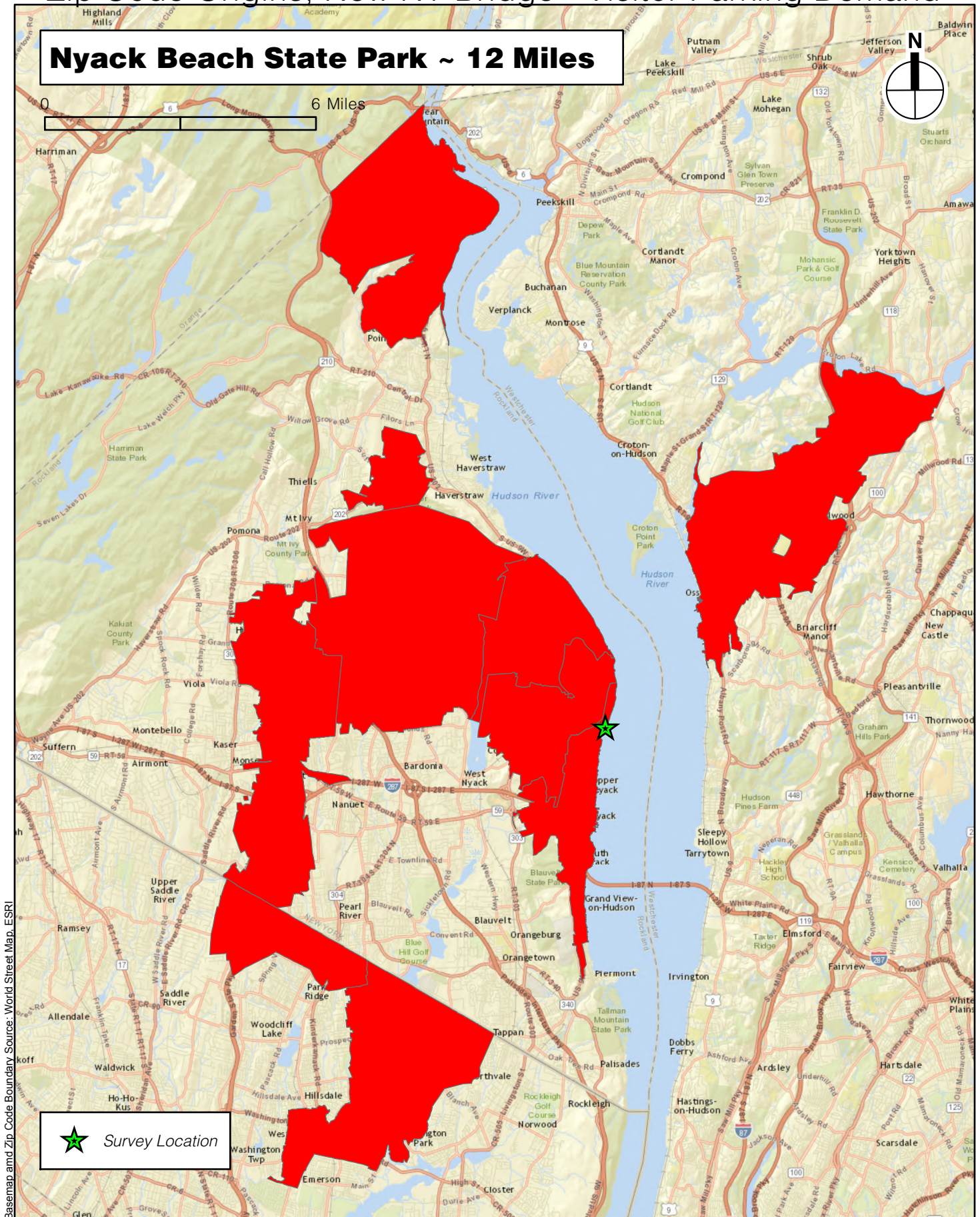
Zip Code Origins, New NY Bridge - Visitor Parking Demand



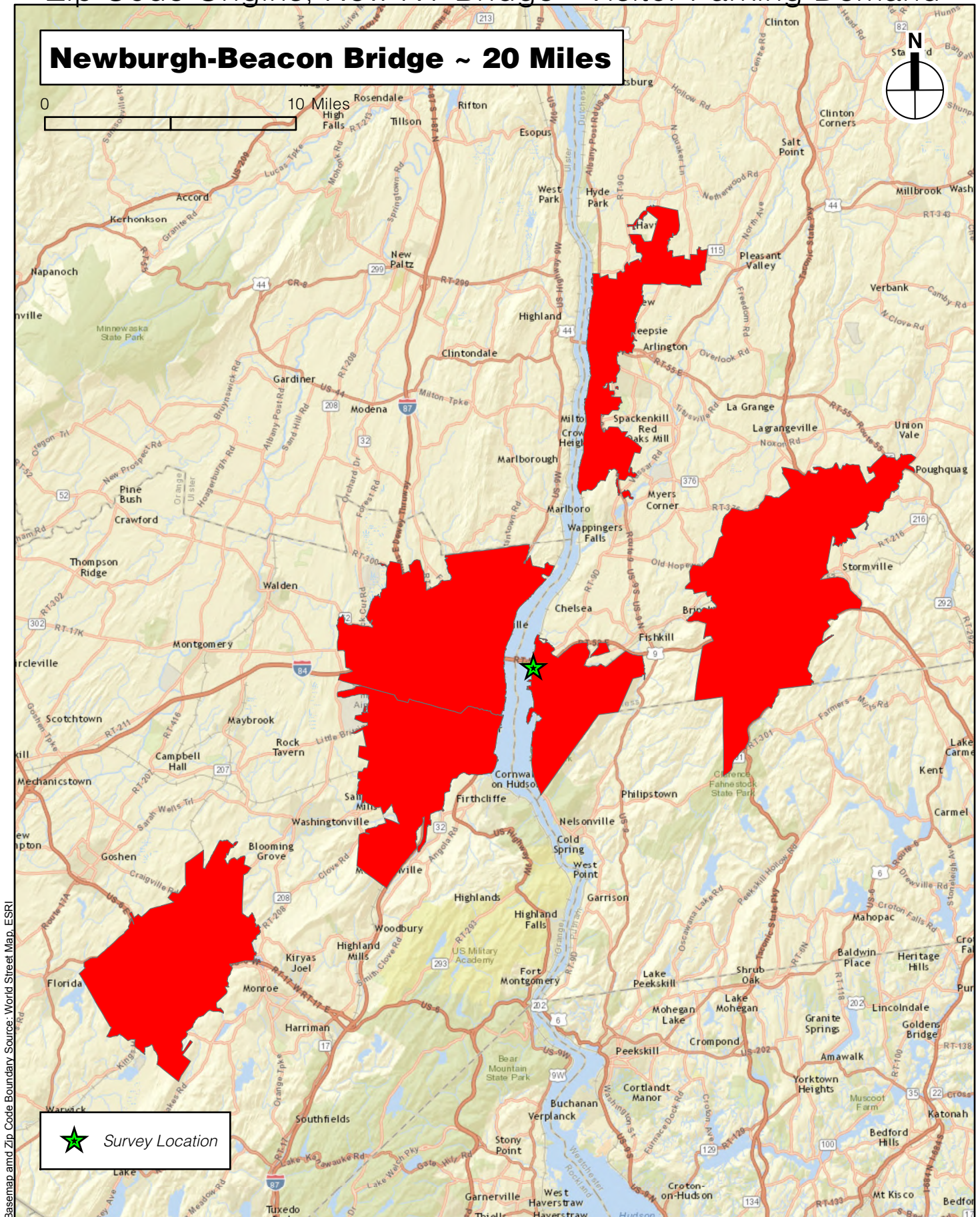
Zip Code Origins, New NY Bridge - Visitor Parking Demand



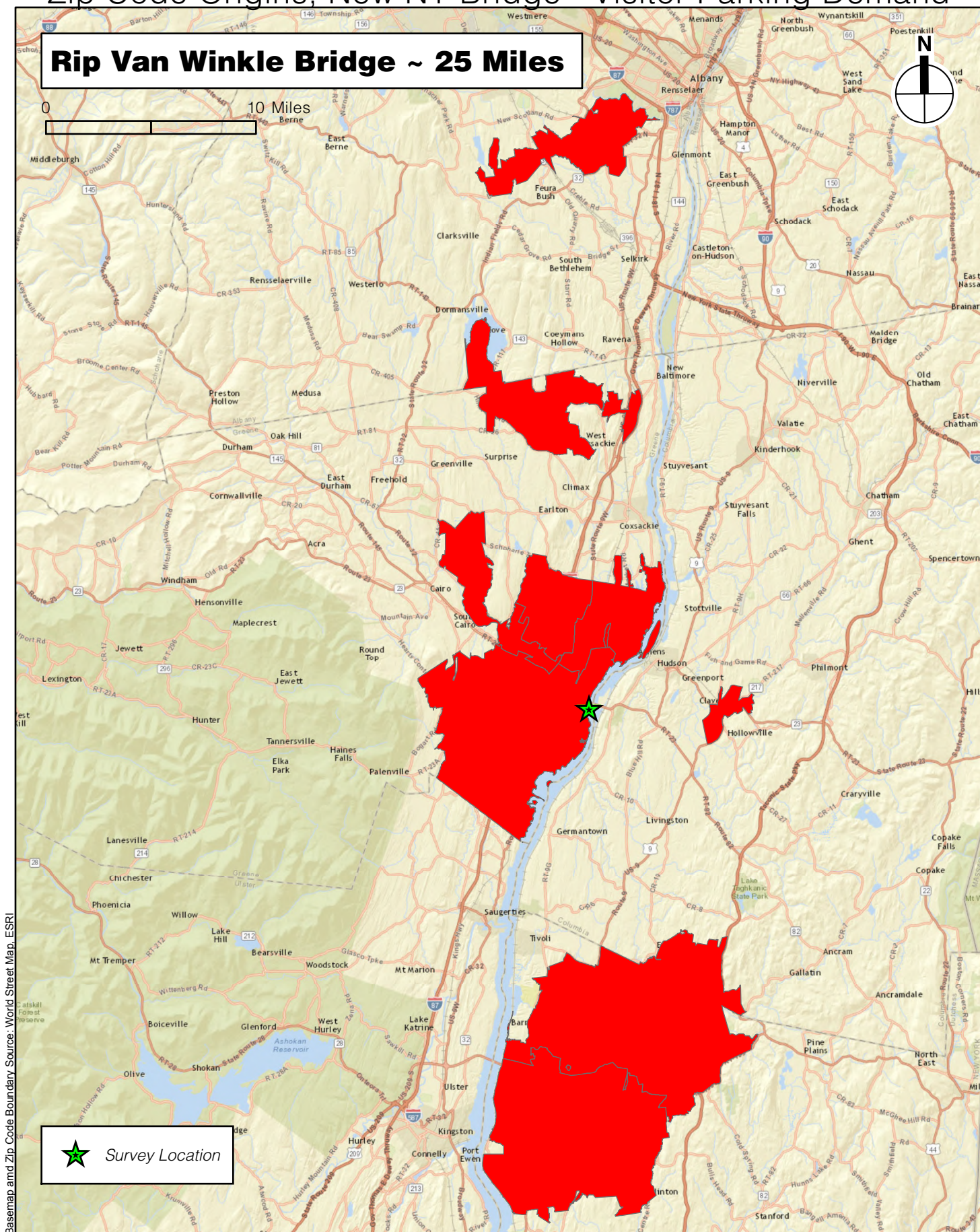
Zip Code Origins, New NY Bridge - Visitor Parking Demand



Zip Code Origins, New NY Bridge - Visitor Parking Demand



Zip Code Origins, New NY Bridge - Visitor Parking Demand



Attachment C: Survey Data

	Location	Time	# In Party	Zip Code	Question 1	Question 2	Question 3	Question 4	Question 5	Question 6	Notes/Remarks
Survey 1	Esposito Trail, Nyack, NY	9:00 AM	1	10960	Home	Walk/Bike	#N/A	#N/A	Walk	1 - 2 hours	0
Survey 2	Esposito Trail, Nyack, NY	9:11 AM	1	10960	Home	Auto/Motorcycle		1 On-Street Nearby	Walk	1 - 2 hours	0
Survey 3	Esposito Trail, Nyack, NY	9:25 AM	1	10960	Home	Auto/Motorcycle		1 On-Street Nearby	Bike Riding	1 - 2 hours	0
Survey 4	Esposito Trail, Nyack, NY	10:05 AM	2	10960	Home	Walk/Bike	#N/A	#N/A	Walk	less than 1 hour	0
Survey 5	Esposito Trail, Nyack, NY	10:27 AM	1	10960	Home	Auto/Motorcycle		1 On-Street Nearby	Walk	1 - 2 hours	0
Survey 6	Esposito Trail, Nyack, NY	10:33 AM	1	10960	Home	Walk/Bike	#N/A	#N/A	Bike Riding	1 - 2 hours	0
Survey 7	Esposito Trail, Nyack, NY	10:47 AM	1	10960	Home	Auto/Motorcycle		2 On-Street Nearby	Walk	less than 1 hour	0
Survey 8	Esposito Trail, Nyack, NY	11:05 AM	1	10960	Home	Auto/Motorcycle		2 On-Street Nearby	Bike Riding	1 - 2 hours	0
Survey 9	Esposito Trail, Nyack, NY	11:11 AM	1	10960	Home	Walk/Bike	#N/A	#N/A	Walk	less than 1 hour	0
Survey 10	Esposito Trail, Nyack, NY	11:18 AM	1	10960	Home	Walk/Bike	#N/A	#N/A	Walk	less than 1 hour	0
Survey 11	Esposito Trail, Nyack, NY	11:33 AM	1	10960	Home	Walk/Bike	#N/A	#N/A	Walk	1 - 2 hours	0
Survey 12	Esposito Trail, Nyack, NY	11:49 AM	1	10960	Home	Walk/Bike	#N/A	#N/A	Walk	less than 1 hour	0
Survey 13	Esposito Trail, Nyack, NY	12:05 PM	1	10960	Home	Walk/Bike	#N/A	#N/A	Walk	less than 1 hour	0
Survey 14	Esposito Trail, Nyack, NY	12:19 PM	1	10960	Home	Auto/Motorcycle		2 Garage/Lot Nearby	Bike Riding	2 - 3 hours	0
Survey 15	Esposito Trail, Nyack, NY	12:21 PM	1	10960	Home	Walk/Bike	#N/A	#N/A	Walk	less than 1 hour	0
Survey 16	Esposito Trail, Nyack, NY	12:24 PM	1	10960	Home	Walk/Bike	#N/A	#N/A	Walk	less than 1 hour	0
Survey 17	Esposito Trail, Nyack, NY	12:41 PM	1	10960	Home	Walk/Bike	#N/A	#N/A	Walk	less than 1 hour	0
Survey 18	Esposito Trail, Nyack, NY	12:46 PM	1	10960	Home	Walk/Bike	#N/A	#N/A	Walk	1 - 2 hours	0
Survey 19	Esposito Trail, Nyack, NY	12:50 PM	1	10960	Home	Auto/Motorcycle		2 On-Street Nearby	Walk	1 - 2 hours	0
Survey 20	Esposito Trail, Nyack, NY	12:54 PM	1	10960	Home	Auto/Motorcycle		1 On-Street Nearby	Waiting for laundry	less than 1 hour	0
Survey 21	Esposito Trail, Nyack, NY	1:00 PM	1	10960	Home	Walk/Bike	#N/A	#N/A	Walk	less than 1 hour	0
Survey 22	Esposito Trail, Nyack, NY	1:15 PM	1	10960	Home	Walk/Bike	#N/A	#N/A	Park	1 - 2 hours	0
Survey 23	Esposito Trail, Nyack, NY	1:16 PM	1	10960	Home	Walk/Bike	#N/A	#N/A	Park	1 - 2 hours	0
Survey 24	Esposito Trail, Nyack, NY	1:20 PM	1	10960	Home	Walk/Bike	#N/A	#N/A	Park	less than 1 hour	0
Survey 25	Esposito Trail, Nyack, NY	1:18 PM	1	10960	Home	Auto/Motorcycle		1 On-Street Nearby	Bike Riding	1 - 2 hours	0
Survey 26	Esposito Trail, Nyack, NY	2:02 PM	1	10960	Home	#N/A	#N/A	#N/A	Walk	less than 1 hour	0
Survey 27	Esposito Trail, Nyack, NY	2:10 PM	1	10960	Home	Walk/Bike	#N/A	#N/A	Bike Riding	less than 1 hour	0
Survey 28	Esposito Trail, Nyack, NY	2:22 PM	1	10960	Home	Walk/Bike	#N/A	#N/A	Walk	less than 1 hour	0
Survey 29	Esposito Trail, Nyack, NY	2:35 PM	1	10960	Home	Auto/Motorcycle		2 On-Street Nearby	Park	1 - 2 hours	0
Survey 30	Esposito Trail, Nyack, NY	3:01 PM	1	10960	Home	Walk/Bike	#N/A	#N/A	Walk	less than 1 hour	0
Survey 31	Esposito Trail, Nyack, NY	3:05 PM	1	10960	Home	Walk/Bike	#N/A	#N/A	Walk	1 - 2 hours	0
Survey 32	Esposito Trail, Nyack, NY	3:35 PM	1	10960	Home	Walk/Bike	#N/A	#N/A	Walk	less than 1 hour	0
Survey 33	Esposito Trail, Nyack, NY	3:49 PM	1	10960	Home	Walk/Bike	#N/A	#N/A	Walk	less than 1 hour	0
Survey 34	Riverwalk Tarrytown	8:45 AM	1	10591	Home	Walk/Bike	#N/A	#N/A	Walk	1 - 2 hours	0
Survey 35	Riverwalk Tarrytown	8:50 AM	1	10591	Home	Walk/Bike	#N/A	#N/A	General Recreation	1 - 2 hours	0
Survey 36	Riverwalk Tarrytown	8:50 AM	1	10562	Home	Auto/Motorcycle		1 Park at friend's house	General Recreation	1 - 2 hours	0
Survey 37	Riverwalk Tarrytown	8:57 AM	1	10604	Home	Auto/Motorcycle		2 Garage/Lot Nearby	General Recreation	less than 1 hour	0
Survey 38	Riverwalk Tarrytown	9:02 AM	1	10591	Home	Walk/Bike	#N/A	#N/A	Walk	1 - 2 hours	0
Survey 39	Riverwalk Tarrytown	9:03 AM	1	10591	Home	Auto/Motorcycle		2 Garage/Lot Nearby	General Recreation	less than 1 hour	0
Survey 40	Riverwalk Tarrytown	9:06 AM	1	10471	Home	Auto/Motorcycle		3 Garage/Lot Nearby	General Recreation	less than 1 hour	0
Survey 41	Riverwalk Tarrytown	9:08 AM	1	10591	Home	Auto/Motorcycle		1 Garage/Lot Nearby	General Recreation	less than 1 hour	0
Survey 42	Riverwalk Tarrytown	9:11 AM	1	10591	Home	Auto/Motorcycle		1 Garage/Lot Nearby	General Recreation	less than 1 hour	0
Survey 43	Riverwalk Tarrytown	9:13 AM	2	10591	Home	Walk/Bike	#N/A	Garage/Lot Nearby	General Recreation	1 - 2 hours	0
Survey 44	Riverwalk Tarrytown	9:18 AM	1	10591	Home	Walk/Bike	#N/A	#N/A	Walk	less than 1 hour	0
Survey 45	Riverwalk Tarrytown	9:21 AM	1	10591	Home	Auto/Motorcycle		1 Garage/Lot Nearby	General Recreation	less than 1 hour	0
Survey 46	Riverwalk Tarrytown	9:30 AM	1	10591	Home	Auto/Motorcycle		1 Garage/Lot Nearby	General Recreation	1 - 2 hours	0
Survey 47	Riverwalk Tarrytown	9:31 AM	1	10591	Home	Auto/Motorcycle		2 Dropped-off	General Recreation	less than 1 hour	0

Survey 48	Riverwalk Tarrytown	10:07 AM	1	10591	Home	Auto/Motorcycle		2 Garage/Lot Nearby	General Recreation	less than 1 hour	0	
Survey 49	Riverwalk Tarrytown	10:12 AM	1	10591	Home	Walk/Bike	#N/A	#N/A	Walk	less than 1 hour	0	
Survey 50	Riverwalk Tarrytown	10:17 AM	1	10591	Home	Walk/Bike	#N/A	#N/A	General Recreation	less than 1 hour	0	
Survey 51	Riverwalk Tarrytown	10:35 AM	1	10591	Home	Auto/Motorcycle		1 Garage/Lot Nearby	General Recreation	2 - 3 hours	0	
Survey 52	Riverwalk Tarrytown	10:41 AM	1	10310	Home	Auto/Motorcycle		1 Garage/Lot Nearby	Picking up friend	less than 1 hour	0	
Survey 53	Riverwalk Tarrytown	10:45 AM	1	10591	Home	Walk/Bike	#N/A	#N/A	General Recreation	1 - 2 hours	0	
Survey 54	Riverwalk Tarrytown	10:47 AM	1	10591	Home	Auto/Motorcycle		1 Garage/Lot Nearby	N/A	less than 1 hour	0	
Survey 55	Riverwalk Tarrytown	10:50 AM	3	10591	Home	Walk/Bike	#N/A	#N/A	General Recreation	less than 1 hour	0	
Survey 56	Riverwalk Tarrytown	10:55 AM	1	10533	Home	Auto/Motorcycle		1	#N/A	General Recreation	less than 1 hour	0
Survey 57	Riverwalk Tarrytown	10:59 AM	1	10543	Home	Auto/Motorcycle		1 Garage/Lot Nearby	go look at lighthouse	1 - 2 hours	0	
Survey 58	Riverwalk Tarrytown	11:00 AM	1	10805	Home	Auto/Motorcycle		1 Garage/Lot Nearby	General Recreation	less than 1 hour	0	
Survey 59	Riverwalk Tarrytown	10:05 AM	1	10591	Home	Auto/Motorcycle		2 Garage/Lot Nearby	Walk	less than 1 hour	0	
Survey 60	Riverwalk Tarrytown	10:06 AM	4	10591	Home	Walk/Bike	#N/A	#N/A	Walk	less than 1 hour	0	
Survey 61	Riverwalk Tarrytown	10:08 AM	2	10591	Home	Walk/Bike	#N/A	#N/A	Walk	1 - 2 hours	0	
Survey 62	Riverwalk Tarrytown	10:20 AM	1	10591	Home	Walk/Bike	#N/A	#N/A	Walk	1 - 2 hours	0	
Survey 63	Riverwalk Tarrytown	11:25 AM	1	10591	Home	Walk/Bike	#N/A	#N/A	Walk	1 - 2 hours	0	
Survey 64	Riverwalk Tarrytown	11:27 AM	1	10709	Home	Auto/Motorcycle		3 Garage/Lot Nearby	Walk	less than 1 hour	0	
Survey 65	Riverwalk Tarrytown	11:29 AM	1	10591	Home	Walk/Bike	#N/A	#N/A	Walk	1 - 2 hours	0	
Survey 66	Riverwalk Tarrytown	11:30 AM	1	10019	Home	Auto/Motorcycle		4 Garage/Lot Nearby	General Recreation	less than 1 hour	0	
Survey 67	Riverwalk Tarrytown	11:33 AM	1	10591	Home	Auto/Motorcycle		3 Garage/Lot Nearby	Walk	1 - 2 hours	0	
Survey 68	Riverwalk Tarrytown	11:35 AM	2	10566	Home	Walk/Bike		1	#N/A	Walk	less than 1 hour	0
Survey 69	Riverwalk Tarrytown	11:37 AM	1	11706	Home	Auto/Motorcycle		2 Garage/Lot Nearby	General Recreation	less than 1 hour	0	
Survey 70	Riverwalk Tarrytown	11:40 AM	1	10591	Home	Walk/Bike	#N/A	#N/A	Walk	less than 1 hour	0	
Survey 71	Riverwalk Tarrytown	11:41 AM	1	07419	Home	Auto/Motorcycle		1 Garage/Lot Nearby	General Recreation	1 - 2 hours	0	
Survey 72	Riverwalk Tarrytown	11:45 AM	1	10591	Home	Auto/Motorcycle		1 Garage/Lot Nearby	General Recreation	less than 1 hour	0	
Survey 73	Riverwalk Tarrytown	11:49 AM	1	10591	Home	Auto/Motorcycle		2 Garage/Lot Nearby	General Recreation	1 - 2 hours	0	
Survey 74	Riverwalk Tarrytown	11:53 AM	1	10591	Home	Auto/Motorcycle		1 Garage/Lot Nearby	Walk	less than 1 hour	0	
Survey 75	Riverwalk Tarrytown	12:00 PM	1	10533	Home	Auto/Motorcycle		2	#N/A	General Recreation	1 - 2 hours	0
Survey 76	Riverwalk Tarrytown	12:04 PM	1	10591	Home	Auto/Motorcycle		1	#N/A	General Recreation	2 - 3 hours	0
Survey 77	Riverwalk Tarrytown	12:10 PM	1	10591	Home	Auto/Motorcycle		1	#N/A	General Recreation	2 - 3 hours	0
Survey 78	Riverwalk Tarrytown	12:20 PM	1	10591	Home	Auto/Motorcycle		2	#N/A	General Recreation	1 - 2 hours	0
Survey 79	Riverwalk Tarrytown	12:24 PM	1	10591	Home	Walk/Bike	#N/A	#N/A	Walk	less than 1 hour	0	
Survey 80	Riverwalk Tarrytown	12:26 PM	1	10591	Home	Walk/Bike	#N/A	#N/A	Walk	less than 1 hour	0	
Survey 81	Riverwalk Tarrytown	12:30 PM	1	10591	Home	Auto/Motorcycle		1 Garage/Lot Nearby	#N/A	1 - 2 hours	0	
Survey 82	Riverwalk Tarrytown	12:33 PM	1	10523	Home	Auto/Motorcycle		1	#N/A	General Recreation	less than 1 hour	0
Survey 83	Riverwalk Tarrytown	12:35 PM	1	10523	Home	Auto/Motorcycle		2 Garage/Lot Nearby	General Recreation	less than 1 hour	0	
Survey 84	Riverwalk Tarrytown	12:41 PM	1	10533	Home	Auto/Motorcycle		1 Garage/Lot Nearby	General Recreation	less than 1 hour	0	
Survey 85	Riverwalk Tarrytown	12:44 PM	1	10591	Home	Walk/Bike	#N/A	#N/A	Walk	less than 1 hour	0	
Survey 86	Riverwalk Tarrytown	12:46 PM	1	10591	Home	Auto/Motorcycle		1 Garage/Lot Nearby	General Recreation	less than 1 hour	0	
Survey 87	Riverwalk Tarrytown	12:50 PM	1	10533	Home	Auto/Motorcycle		1 Garage/Lot Nearby	General Recreation	1 - 2 hours	0	
Survey 88	Riverwalk Tarrytown	12:53 PM	1	10591	Home	Walk/Bike	#N/A	#N/A	Walk	less than 1 hour	0	
Survey 89	Riverwalk Tarrytown	1:01 PM	1	10591	Home	Walk/Bike	#N/A	#N/A	Walk	less than 1 hour	0	
Survey 90	Riverwalk Tarrytown	1:04 PM	1	10591	Home	Auto/Motorcycle		1 Garage/Lot Nearby	General Recreation	less than 1 hour	0	
Survey 91	Riverwalk Tarrytown	1:07 PM	1	10591	Home	Auto/Motorcycle		1 Garage/Lot Nearby	Walk	less than 1 hour	0	
Survey 92	Riverwalk Tarrytown	1:11 PM	1	10591	Home	Auto/Motorcycle		3 Garage/Lot Nearby	General Recreation	1 - 2 hours	0	
Survey 93	Riverwalk Tarrytown	1:15 PM	1	10591	Home	Auto/Motorcycle		2 Garage/Lot Nearby	General Recreation	less than 1 hour	0	
Survey 94	Riverwalk Tarrytown	1:19 PM	1	10591	Home	Walk/Bike	#N/A	#N/A	Walk	less than 1 hour	0	
Survey 95	Riverwalk Tarrytown	1:24 PM	1	10591	Home	Auto/Motorcycle		1 Garage/Lot Nearby	General Recreation	less than 1 hour	0	
Survey 96	Riverwalk Tarrytown	1:26 PM	1	10591	Home	Auto/Motorcycle		1 Garage/Lot Nearby	General Recreation	less than 1 hour	0	
Survey 97	Riverwalk Tarrytown	1:31 PM	1	10591	Home	Walk/Bike	#N/A	#N/A	General Recreation	less than 1 hour	0	

Survey 98	Riverwalk Tarrytown	1:35 PM	1	10591	Home	Walk/Bike	#N/A	#N/A	General Recreation	less than 1 hour	0	
Survey 99	Riverwalk Tarrytown	1:41 PM	1	10591	Home	Auto/Motorcycle		1 Garage/Lot Nearby	General Recreation	less than 1 hour	0	
Survey 100	Riverwalk Tarrytown	1:45 PM	1	10591	Home	Walk/Bike	#N/A	#N/A	Walk	less than 1 hour	0	
Survey 101	Riverwalk Tarrytown	1:49 PM	1	10591	Home	Auto/Motorcycle		1 Garage/Lot Nearby	General Recreation	1 - 2 hours	0	
Survey 102	Riverwalk Tarrytown	1:53 PM	1	10591	Home	Walk/Bike	#N/A	#N/A	General Recreation	less than 1 hour	0	
Survey 103	Riverwalk Tarrytown	1:55 PM	1	10591	Home	Walk/Bike	#N/A	#N/A	Walk	less than 1 hour	0	
Survey 104	Riverwalk Tarrytown	1:59 PM	1	10591	Home	Walk/Bike	#N/A	#N/A	Walk	less than 1 hour	0	
Survey 105	Riverwalk Tarrytown	2:01 PM	1	10533	Home	Auto/Motorcycle		1 Garage/Lot Nearby	Meet friend	less than 1 hour	0	
Survey 106	Riverwalk Tarrytown	2:03 PM	1	10591	Home	Auto/Motorcycle		2 Garage/Lot Nearby	General Recreation	1 - 2 hours	0	
Survey 107	Riverwalk Tarrytown	2:11 PM	1	10591	Home	Walk/Bike	#N/A	#N/A	Walk	less than 1 hour	0	
Survey 108	Riverwalk Tarrytown	2:14 PM	1	10591	Home	Walk/Bike	#N/A	#N/A	Walk	less than 1 hour	0	
Survey 109	Riverwalk Tarrytown	2:15 PM	1	10591	Home	Walk/Bike	#N/A	#N/A	General Recreation	less than 1 hour	0	
Survey 110	Riverwalk Tarrytown	2:19 PM	1	10522	Home	Auto/Motorcycle		2 Garage/Lot Nearby	General Recreation	1 - 2 hours	0	
Survey 111	Riverwalk Tarrytown	2:21 PM	1	10502	Home	Auto/Motorcycle		3 Garage/Lot Remotely	Bike Riding	1 - 2 hours	0	
Survey 112	Riverwalk Tarrytown	2:24 PM	1	10533	Home	Auto/Motorcycle		1 Garage/Lot Nearby	General Recreation	less than 1 hour	0	
Survey 113	Riverwalk Tarrytown	2:27 PM	1	10533	Home	Auto/Motorcycle		2 Garage/Lot Nearby	General Recreation	less than 1 hour	0	
Survey 114	Riverwalk Tarrytown	2:29 PM	1	10591	Home	Auto/Motorcycle		1 Garage/Lot Nearby	Bike Riding	1 - 2 hours	0	
Survey 115	Riverwalk Tarrytown	2:31 PM	1	10591	Home	Walk/Bike	#N/A	#N/A	Walk	less than 1 hour	0	
Survey 116	Riverwalk Tarrytown	2:34 PM	1	10591	Home	Auto/Motorcycle		1 Garage/Lot Nearby	General Recreation	less than 1 hour	0	
Survey 117	Riverwalk Tarrytown	2:37 PM	1	10591	Home	Other	#N/A	#N/A	Walk	1 - 2 hours	0	
Survey 118	Riverwalk Tarrytown	2:41 PM	1	10591	Home	Auto/Motorcycle		2 Garage/Lot Nearby	#N/A	1 - 2 hours	0	
Survey 119	Riverwalk Tarrytown	2:47 PM	1	10591	Home	Auto/Motorcycle		1 Garage/Lot Nearby	General Recreation	1 - 2 hours	0	
Survey 120	Riverwalk Tarrytown	2:50 PM	1	10591	Home	Walk/Bike	#N/A	#N/A	General Recreation	1 - 2 hours	0	
Survey 121	Riverwalk Tarrytown	2:51 PM	1	10591	Home	Auto/Motorcycle		1 Garage/Lot Nearby	General Recreation	1 - 2 hours	0	
Survey 122	Riverwalk Tarrytown	2:53 PM	1	10591	Home	Walk/Bike	#N/A	#N/A	Walk	1 - 2 hours	0	
Survey 123	Riverwalk Tarrytown	2:57 PM	1	10475	Home	Auto/Motorcycle		3 Garage/Lot Nearby	Bike Riding	2 - 3 hours	0	
Survey 124	Riverwalk Tarrytown	2:59 PM	1	10591	Home	Auto/Motorcycle		1 Garage/Lot Nearby	#N/A	1 - 2 hours	0	
Survey 125	Riverwalk Tarrytown	3:01 PM	1	10591	Home	Walk/Bike	#N/A	#N/A	Walk	less than 1 hour	0	
Survey 126	Riverwalk Tarrytown	3:15 PM	1	10591	Home	Walk/Bike	#N/A	#N/A	General Recreation	less than 1 hour	0	
Survey 127	Riverwalk Tarrytown	3:09 PM	1	10469	Home	Auto/Motorcycle		2 Garage/Lot Nearby	Picnic	1 - 2 hours	0	
Survey 128	Riverwalk Tarrytown	3:11 PM	1	10591	Home	Auto/Motorcycle		1	#N/A	General Recreation	less than 1 hour	0
Survey 129	Riverwalk Tarrytown	3:13 PM	1	10591	Home	Auto/Motorcycle		1	#N/A	General Recreation	less than 1 hour	0
Survey 130	Riverwalk Tarrytown	3:15 PM	1	10591	Home	Auto/Motorcycle		1	#N/A	Walk	less than 1 hour	0
Survey 131	Riverwalk Tarrytown	3:17 PM	1	10591	Home	Auto/Motorcycle		2 Garage/Lot Nearby	Picnic	1 - 2 hours	0	
Survey 132	Riverwalk Tarrytown	3:22 PM	1	10591	Home	Walk/Bike	#N/A	#N/A	Walk	less than 1 hour	0	
Survey 133	Riverwalk Tarrytown	3:25 PM	1	10533	Home	Auto/Motorcycle		1 Garage/Lot Nearby	General Recreation	less than 1 hour	0	
Survey 134	Riverwalk Tarrytown	3:27 PM	1	10533	Home	Auto/Motorcycle		1 Garage/Lot Nearby	General Recreation	1 - 2 hours	0	
Survey 135	Riverwalk Tarrytown	3:31 PM	1	10591	Home	Walk/Bike	#N/A	#N/A	Walk	less than 1 hour	0	
Survey 136	Riverwalk Tarrytown	3:37 PM	1	10591	Home	Walk/Bike	#N/A	#N/A	Walk	less than 1 hour	0	
Survey 137	Riverwalk Tarrytown	3:38 PM	1	10591	Home	Auto/Motorcycle		1 Garage/Lot Nearby	General Recreation	1 - 2 hours	0	
Survey 138	Riverwalk Tarrytown	3:41 PM	1	10591	Home	Walk/Bike	#N/A	#N/A	Bike Riding	less than 1 hour	0	
Survey 139	Riverwalk Tarrytown	3:45 PM	1	10533	Home	Auto/Motorcycle		1 Garage/Lot Nearby	General Recreation	less than 1 hour	0	
Survey 140	Riverwalk Tarrytown	3:46 PM	1	10591	Home	Walk/Bike	#N/A	#N/A	General Recreation	1 - 2 hours	0	
Survey 141	Riverwalk Tarrytown	3:47 PM	1	10591	Home	Walk/Bike	#N/A	#N/A	General Recreation	less than 1 hour	0	
Survey 142	Riverwalk Tarrytown	3:51 PM	1	10591	Home	Auto/Motorcycle		1 Garage/Lot Nearby	General Recreation	1 - 2 hours	0	
Survey 143	Riverwalk Tarrytown	3:53 PM	1	10591	Home	Walk/Bike	#N/A	#N/A	Walk	less than 1 hour	0	
Survey 144	Riverwalk Tarrytown	3:57 PM	1	10533	Home	Auto/Motorcycle		1 Garage/Lot Nearby	General Recreation	less than 1 hour	0	
Survey 145	Riverwalk Tarrytown	4:00 PM	1	10522	Home	Auto/Motorcycle		2 Garage/Lot Nearby	General Recreation	less than 1 hour	0	
Survey 146	Riverwalk Tarrytown	4:04 PM	1	10591	Home	Walk/Bike	#N/A	#N/A	General Recreation	less than 1 hour	0	
Survey 147	Walkway on Hudson	8:07 AM	1	12580	Home	Auto/Motorcycle		1 Garage/Lot Nearby	General Recreation	less than 1 hour	0	

Survey 148	Walkway on Hudson	8:07 AM	1	12601	Home	Auto/Motorcycle	1 Garage/Lot Nearby	General Recreation	less than 1 hour	0
Survey 149	Walkway on Hudson	8:31 AM	1	12538	Home	Auto/Motorcycle	1 Garage/Lot Nearby	General Recreation	1 - 2 hours	0
Survey 150	Walkway on Hudson	8:33 AM	1	12603	Home	Auto/Motorcycle	1 Garage/Lot Nearby	Walk	1 - 2 hours	0
Survey 151	Walkway on Hudson	8:34 AM	1	12524	Home	Auto/Motorcycle	2 Garage/Lot Nearby	Walk	1 - 2 hours	0
Survey 152	Walkway on Hudson	8:36 AM	1	12603	Home	Auto/Motorcycle	1 Garage/Lot Nearby	General Recreation	1 - 2 hours	0
Survey 153	Walkway on Hudson	8:37 AM	1	12528	Home	Auto/Motorcycle	1 Garage/Lot Nearby	Walk	1 - 2 hours	0
Survey 154	Walkway on Hudson	8:38 AM	1	12601	Home	Auto/Motorcycle	1 On-Street Nearby	General Recreation	1 - 2 hours	0
Survey 155	Walkway on Hudson	8:39 AM	1	12603	Home	Auto/Motorcycle	4 Garage/Lot Nearby	Event	3 - 4 hours	cw
Survey 156	Walkway on Hudson	8:55 AM	1	12603	Home	Auto/Motorcycle	2 Garage/Lot Nearby	Walk	1 - 2 hours	0
Survey 157	Walkway on Hudson	8:59 AM	1	12569	Home	Auto/Motorcycle	1 Garage/Lot Nearby	Event	4 or more hours	cw
Survey 158	Walkway on Hudson	9:00 AM	1	12601	Home	Walk/Bike	#N/A Garage/Lot Nearby	General Recreation	1 - 2 hours	0
Survey 159	Walkway on Hudson	9:01 AM	1	12518	Home	Auto/Motorcycle	2 Garage/Lot Nearby	Event	2 - 3 hours	cw
Survey 160	Walkway on Hudson	9:02 AM	1	12350	Home	Auto/Motorcycle	1 #N/A	General Recreation	1 - 2 hours	0
Survey 161	Walkway on Hudson	9:03 AM	1	12514	Work	Auto/Motorcycle	1 Garage/Lot Nearby	Run	1 - 2 hours	0
Survey 162	Walkway on Hudson	9:04 AM	1	12514	Home	Auto/Motorcycle	1 Garage/Lot Nearby	Run	1 - 2 hours	0
Survey 163	Walkway on Hudson	9:05 AM	2	12538	School/Shc	City Bus	#N/A #N/A	Event	2 - 3 hours	cw
Survey 164	Walkway on Hudson	9:03 AM	1	12601	Home	Walk/Bike	#N/A #N/A	Walk	less than 1 hour	0
Survey 165	Walkway on Hudson	9:05 AM	1	12601	Home	Auto/Motorcycle	1 Garage/Lot Nearby	Event	3 - 4 hours	cw
Survey 166	Walkway on Hudson	9:08 AM	1	12601	Home	Walk/Bike	#N/A #N/A	0	less than 1 hour	0
Survey 167	Walkway on Hudson	9:10 AM	1	12603	Home	Auto/Motorcycle	1 Garage/Lot Nearby	Event	2 - 3 hours	cw
Survey 168	Walkway on Hudson	9:13 AM	1	12569	Home	Auto/Motorcycle	2 Garage/Lot Nearby	Walk	1 - 2 hours	0
Survey 169	Walkway on Hudson	9:17 AM	1	12603	Home	Auto/Motorcycle	2 Garage/Lot Nearby	Jehovah's witness setting u	4 or more hours	0
Survey 170	Walkway on Hudson	9:18 AM	1	12603	Home	Auto/Motorcycle	2 Garage/Lot Nearby	Jehovah's witness setting u	4 or more hours	0
Survey 171	Walkway on Hudson	9:20 AM	1	12603	Work	Auto/Motorcycle	1 On-Street Nearby	Walk	1 - 2 hours	0
Survey 172	Walkway on Hudson	9:25 AM	1	12538	Home	Auto/Motorcycle	2 Garage/Lot Nearby	Run	less than 1 hour	0
Survey 173	Walkway on Hudson	9:26 AM	1	12601	Home	Auto/Motorcycle	1 Garage/Lot Nearby	Run	1 - 2 hours	0
Survey 174	Walkway on Hudson	9:29 AM	1	12601	Home	Auto/Motorcycle	1 Garage/Lot Nearby	Walk	1 - 2 hours	0
Survey 175	Walkway on Hudson	9:31 AM	1	12487	Home	Auto/Motorcycle	2 Garage/Lot Nearby	Walk	1 - 2 hours	0
Survey 176	Walkway on Hudson	9:32 AM	1	12538	Home	Auto/Motorcycle	1 Garage/Lot Nearby	Walk	1 - 2 hours	0
Survey 177	Walkway on Hudson	9:43 AM	1	10528	Home	Auto/Motorcycle	1 On-Street Nearby	Walk	3 - 4 hours	0
Survey 178	Walkway on Hudson	9:45 AM	1	12528	#N/A	Auto/Motorcycle	1 Garage/Lot Nearby	Walk	1 - 2 hours	0
Survey 179	Walkway on Hudson	9:47 AM	1	12569	Home	Auto/Motorcycle	1 On-Street Nearby	General Recreation	less than 1 hour	0
Survey 180	Walkway on Hudson	9:50 AM	1	12676	Home	Auto/Motorcycle	2 On-Street Nearby	Explore; never been here	#N/A	0
Survey 181	Walkway on Hudson	9:55 AM	3	12603	School/Shc	Walk/Bike	#N/A #N/A	Walk	less than 1 hour	0
Survey 182	Walkway on Hudson	9:57 AM	1	12603	Home	Auto/Motorcycle	1 Garage/Lot Nearby	General Recreation	1 - 2 hours	0
Survey 183	Walkway on Hudson	9:58 AM	1	10940	Home	Auto/Motorcycle	3 #N/A	Walk	2 - 3 hours	0
Survey 184	Walkway on Hudson	10:00 AM	1	12578	Home	Auto/Motorcycle	1 Garage/Lot Nearby	Walk	1 - 2 hours	0
Survey 185	Walkway on Hudson	10:01 AM	1	12560	Home	Auto/Motorcycle	1 Garage/Lot Nearby	General Recreation	1 - 2 hours	0
Survey 186	Walkway on Hudson	10:02 AM	1	10919	#N/A	Auto/Motorcycle	2 Garage/Lot Nearby	Walk	2 - 3 hours	0
Survey 187	Walkway on Hudson	10:03 AM	1	20854	Home	Auto/Motorcycle	1 On-Street Nearby	First time here	less than 1 hour	0
Survey 188	Walkway on Hudson	10:05 AM	1	12543	Home	Auto/Motorcycle	2 Garage/Lot Nearby	Event	1 - 2 hours	cw
Survey 189	Walkway on Hudson	10:06 AM	1	60613	#N/A	Auto/Motorcycle	3 Garage/Lot Nearby	Sightseeing	1 - 2 hours	0
Survey 190	Walkway on Hudson	10:08 AM	1	20614	#N/A	Auto/Motorcycle	2 Garage/Lot Nearby	Run	1 - 2 hours	0
Survey 191	Walkway on Hudson	10:15 AM	1	10950	Home	Auto/Motorcycle	2 Garage/Lot Nearby	Event	1 - 2 hours	cw
Survey 192	Walkway on Hudson	10:16 AM	1	00000	Home	Auto/Motorcycle	5 Garage/Lot Nearby	Event	1 - 2 hours	cw
Survey 193	Walkway on Hudson	10:17 AM	1	00000	#N/A	Auto/Motorcycle	5 Garage/Lot Nearby	Event	1 - 2 hours	cw
Survey 194	Walkway on Hudson	10:17 AM	1	00000	Home	Auto/Motorcycle	5 Garage/Lot Nearby	Event	2 - 3 hours	cw
Survey 195	Walkway on Hudson	10:18 AM	1	00000	Hotel	Auto/Motorcycle	4 Garage/Lot Nearby	Event	1 - 2 hours	wedding
Survey 196	Walkway on Hudson	10:20 AM	1	12603	Home	Auto/Motorcycle	1 Garage/Lot Nearby	Event	1 - 2 hours	cw
Survey 197	Walkway on Hudson	10:25 AM	1	02472	Hotel	Auto/Motorcycle	2 Garage/Lot Nearby	General Recreation	2 - 3 hours	0

Survey 198	Walkway on Hudson	10:26 AM	1	12572	Home	Auto/Motorcycle	2 Garage/Lot Nearby	Walk	1 - 2 hours	0
Survey 199	Walkway on Hudson	10:28 AM	1	12561	#N/A	Auto/Motorcycle	2 Garage/Lot Nearby	Event	1 - 2 hours	cw
Survey 200	Walkway on Hudson	10:29 AM	1	08844	Home	Auto/Motorcycle	3 Garage/Lot Nearby	Walk	1 - 2 hours	0
Survey 201	Walkway on Hudson	10:30 AM	1	13316	Home	Auto/Motorcycle	3 Garage/Lot Nearby	Walk	3 - 4 hours	0
Survey 202	Walkway on Hudson	10:30 AM	1	12528	Home	Auto/Motorcycle	2 #N/A	Event	1 - 2 hours	cw
Survey 203	Walkway on Hudson	10:31 AM	1	00000	Home	Auto/Motorcycle	3 Garage/Lot Nearby	Event	less than 1 hour	cw
Survey 204	Walkway on Hudson	10:32 AM	1	12538	Hotel	Auto/Motorcycle	2 Garage/Lot Nearby	Walk	2 - 3 hours	0
Survey 205	Walkway on Hudson	10:33 AM	1	12566	Home	Auto/Motorcycle	2 Garage/Lot Nearby	Event	1 - 2 hours	cw
Survey 206	Walkway on Hudson	10:35 AM	1	00000	visiting from	Auto/Motorcycle	2 Garage/Lot Nearby	Visiting International	less than 1 hour	0
Survey 207	Walkway on Hudson	10:36 AM	1	12446	Home	Auto/Motorcycle	1 Garage/Lot Nearby	Event	2 - 3 hours	cw
Survey 208	Walkway on Hudson	10:37 AM	1	12533	Home	Auto/Motorcycle	4 Garage/Lot Nearby	Event	1 - 2 hours	cw
Survey 209	Walkway on Hudson	10:38 AM	1	12528	Home	Auto/Motorcycle	1 Garage/Lot Nearby	Event	1 - 2 hours	cw
Survey 210	Walkway on Hudson	10:40 AM	1	12601	Home	Auto/Motorcycle	1 Garage/Lot Nearby	General Recreation	1 - 2 hours	0
Survey 211	Walkway on Hudson	10:43 AM	1	12603	Home	Auto/Motorcycle	4 Garage/Lot Nearby	Event	2 - 3 hours	cw
Survey 212	Walkway on Hudson	10:45 AM	1	12547	Other	Auto/Motorcycle	3 Garage/Lot Nearby	Event	1 - 2 hours	cw
Survey 213	Walkway on Hudson	10:46 AM	1	00000	Home	Auto/Motorcycle	1 Garage/Lot Nearby	Event	1 - 2 hours	cw
Survey 214	Walkway on Hudson	10:47 AM	1	12540	Home	Auto/Motorcycle	2 Garage/Lot Nearby	Event	1 - 2 hours	cw
Survey 215	Walkway on Hudson	10:50 AM	1	12590	Home	Auto/Motorcycle	1 Garage/Lot Nearby	Event	2 - 3 hours	cw
Survey 216	Walkway on Hudson	10:55 AM	1	12501	Home	Auto/Motorcycle	2 On-Street Nearby	Walk	less than 1 hour	0
Survey 217	Walkway on Hudson	10:56 AM	1	12601	Home	Auto/Motorcycle	2 Garage/Lot Nearby	Event	2 - 3 hours	cw
Survey 218	Walkway on Hudson	10:57 AM	1	12603	Home	Auto/Motorcycle	3 Garage/Lot Nearby	Walk	1 - 2 hours	0
Survey 219	Walkway on Hudson	10:58 AM	1	12508	Home	Auto/Motorcycle	3 Garage/Lot Nearby	Sightseeing	less than 1 hour	0
Survey 220	Walkway on Hudson	10:55 AM	1	12603	Home	Walk/Bike	#N/A #N/A	General Recreation	1 - 2 hours	0
Survey 221	Walkway on Hudson	10:58 AM	1	12601	Home	Auto/Motorcycle	1 Garage/Lot Nearby	Walk	2 - 3 hours	0
Survey 222	Walkway on Hudson	10:59 AM	1	12603	Home	Auto/Motorcycle	4 Garage/Lot Nearby	0	1 - 2 hours	0
Survey 223	Walkway on Hudson	11:00 AM	1	Highland	Home	Auto/Motorcycle	2 Garage/Lot Nearby	Event	2 - 3 hours	cw
Survey 224	Walkway on Hudson	11:00 AM	1	12538	Home	Auto/Motorcycle	2 Garage/Lot Nearby	Event	3 - 4 hours	cw
Survey 225	Walkway on Hudson	11:01 AM	1	oughkeeps	Other	Auto/Motorcycle	1 "2 Blocks"	Sightseeing	1 - 2 hours	0
Survey 226	Walkway on Hudson	11:02 AM	1	12603	Home	Auto/Motorcycle	4 Garage/Lot Nearby	Event	3 - 4 hours	cw
Survey 227	Walkway on Hudson	11:02 AM	1	12603	Home	Auto/Motorcycle	2 On-Street Remotely	Event	2 - 3 hours	cw
Survey 228	Walkway on Hudson	11:03 AM	1	oughkeeps	Other	Auto/Motorcycle	1 Garage/Lot Nearby	General Recreation	1 - 2 hours	0
Survey 229	Walkway on Hudson	11:04 AM	1	12601	Home	Auto/Motorcycle	2 Garage/Lot Nearby	General Recreation	less than 1 hour	0
Survey 230	Walkway on Hudson	11:05 AM	1	06877	Home	Auto/Motorcycle	1	0	0 1 - 2 hours	0
Survey 231	Walkway on Hudson	11:05 AM	1	12603	Home	Auto/Motorcycle	2 Garage/Lot Nearby	Enjoy	1 - 2 hours	0
Survey 232	Walkway on Hudson	11:06 AM	1	12487	Home	Auto/Motorcycle	1 Garage/Lot Nearby	General Recreation	1 - 2 hours	0
Survey 233	Walkway on Hudson	11:07 AM	1	Hyde Park	Home	Auto/Motorcycle	2 On-Street Nearby	Walk	less than 1 hour	0
Survey 234	Walkway on Hudson	11:08 AM	1	12754	School/Shc	Auto/Motorcycle	1 Garage/Lot Nearby	Run	1 - 2 hours	0
Survey 235	Walkway on Hudson	11:10 AM	1	12540	Home	Auto/Motorcycle	2 Garage/Lot Nearby	Walk	2 - 3 hours	0
Survey 236	Walkway on Hudson	11:15 AM	1	12590	Home	Auto/Motorcycle	4 Garage/Lot Nearby	General Recreation	1 - 2 hours	0
Survey 237	Walkway on Hudson	11:16 AM	1	12603	Home	Auto/Motorcycle	1 E. Side	Walk	3 - 4 hours	0
Survey 238	Walkway on Hudson	11:17 AM	1	12538	Home	Auto/Motorcycle	1 W. Side	0	4 or more hours	0
Survey 239	Walkway on Hudson	11:18 AM	1	New Paltz	Other	Auto/Motorcycle	2 On-Street Remotely	Sightseeing	less than 1 hour	0
Survey 240	Walkway on Hudson	11:22 AM	1	12603	Home	Auto/Motorcycle	5 Garage/Lot Nearby	General Recreation	1 - 2 hours	0
Survey 241	Walkway on Hudson	11:27 AM	1	12538	Home	Auto/Motorcycle	2 Garage/Lot Nearby	Sightseeing	less than 1 hour	0
Survey 242	Walkway on Hudson	11:28 AM	1	12603	Home	Auto/Motorcycle	2 On-Street Nearby	General Recreation	less than 1 hour	0
Survey 243	Walkway on Hudson	11:29 AM	1	Rhineback	Other	Auto/Motorcycle	3 "61 Park"	Social	1 - 2 hours	0
Survey 244	Walkway on Hudson	11:29 AM	1	Highland	Home	Auto/Motorcycle	1	0	0 2 - 3 hours	Volunteer
Survey 245	Walkway on Hudson	11:30 AM	1	12603	Home	Auto/Motorcycle	3 On-Street Nearby	Walk	less than 1 hour	0
Survey 246	Walkway on Hudson	11:31 AM	1	12524	Home	Auto/Motorcycle	2 Garage/Lot Nearby	Event	1 - 2 hours	cw
Survey 247	Walkway on Hudson	11:32 AM	1	12538	Home	Auto/Motorcycle	1 Washington St	Work here	2 - 3 hours	volunteer

Survey 248	Walkway on Hudson	11:33 AM	1	12580	Home	Auto/Motorcycle		1 Garage/Lot Nearby	Work	3 - 4 hours	volunteer
Survey 249	Walkway on Hudson	11:40 AM	1	12601	Home	Walk/Bike	#N/A	#N/A	meeting family member	2 - 3 hours	0
Survey 250	Walkway on Hudson	11:40 AM	1	13730	Home	Walk/Bike	#N/A	#N/A	meeting family member	2 - 3 hours	0
Survey 251	Walkway on Hudson	11:42 AM	1	12601	Home	Walk/Bike	#N/A	#N/A	Walk	less than 1 hour	0
Survey 252	Walkway on Hudson	11:45 AM	1	Highland	Home	Auto/Motorcycle		1	Walk	1 - 2 hours	0
Survey 253	Walkway on Hudson	12:04 PM	1	12603	Home	Auto/Motorcycle		4 Garage/Lot Nearby	Walk	less than 1 hour	0
Survey 254	Walkway on Hudson	12:05 PM	1	12578	Home	Auto/Motorcycle		4 Garage/Lot Nearby	General Recreation	1 - 2 hours	0
Survey 255	Walkway on Hudson	12:06 PM	1	10992	Home	Auto/Motorcycle		2 Garage/Lot Nearby	Event	1 - 2 hours	cw
Survey 256	Walkway on Hudson	12:07 PM	1	12601	Home	Walk/Bike	#N/A	#N/A		0 less than 1 hour	0
Survey 257	Walkway on Hudson	12:08 PM	1	12601	Home	Walk/Bike	#N/A	#N/A	General Recreation	#N/A	0
Survey 258	Walkway on Hudson	12:15 PM	1	12601	Home	Walk/Bike	#N/A	#N/A	Walk	1 - 2 hours	0
Survey 259	Walkway on Hudson	12:17 PM	1	12601	Home	Auto/Motorcycle		1 Garage/Lot Nearby	Social	1 - 2 hours	0
Survey 260	Walkway on Hudson	12:25 PM	1	10512	Home	Auto/Motorcycle		2 Garage/Lot Nearby	Relaxation	2 - 3 hours	0
Survey 261	Walkway on Hudson	12:27 PM	1	00000	School/Shc	Auto/Motorcycle		4 Garage/Lot Nearby	Walk	1 - 2 hours	0
Survey 262	Walkway on Hudson	12:30 PM	1	12602	Home	Run	#N/A	#N/A	General Recreation	1 - 2 hours	0
Survey 263	Walkway on Hudson	12:31 PM	1	12590	Home	Auto/Motorcycle		2 On-Street Nearby	General Recreation	1 - 2 hours	0
Survey 264	Walkway on Hudson	12:32 PM	1	12601	Home	Walk/Bike	#N/A	#N/A	General Recreation	2 - 3 hours	0
Survey 265	Walkway on Hudson	12:33 PM	1	12569	Home	Auto/Motorcycle		2 Garage/Lot Nearby	Energy + photos	1 - 2 hours	0
Survey 266	Walkway on Hudson	12:34 PM	1	12603	Home	Auto/Motorcycle		1	General Recreation	less than 1 hour	0
Survey 267	Walkway on Hudson	12:35 PM	1	12601	#N/A	Auto/Motorcycle		3 Garage/Lot Nearby	General Recreation	less than 1 hour	0
Survey 268	Walkway on Hudson	12:36 PM	1	12553	Home	Auto/Motorcycle		4 Garage/Lot Nearby	Walk	1 - 2 hours	0
Survey 269	Walkway on Hudson	12:37 PM	1	00000	Hotel	Auto/Motorcycle		2 Riverside	#N/A	4 or more hours	0
Survey 270	Walkway on Hudson	12:40 PM	1	12572	Home	Auto/Motorcycle		2 Garage/Lot Nearby	Mother's Day Present	less than 1 hour	0
Survey 271	Walkway on Hudson	12:42 PM	1	12601	Home	Walk/Bike	#N/A	#N/A	General Recreation	2 - 3 hours	0
Survey 272	Walkway on Hudson	12:43 PM	1	12601	Home	Auto/Motorcycle		1 Garage/Lot Nearby	#N/A	#N/A	0
Survey 273	Walkway on Hudson	12:44 PM	1	12603	0	Walk/Bike	#N/A	#N/A	General Recreation	1 - 2 hours	0
Survey 274	Walkway on Hudson	12:44 PM	1	12603	#N/A	Walk/Bike	#N/A	#N/A	General Recreation	1 - 2 hours	0
Survey 275	Walkway on Hudson	12:46 PM	1	12601	Home	Auto/Motorcycle		2 Garage/Lot Nearby	General Recreation	less than 1 hour	0
Survey 276	Walkway on Hudson	12:47 PM	1	12601	Home	Walk/Bike	#N/A	#N/A	General Recreation	less than 1 hour	0
Survey 277	Walkway on Hudson	12:48 PM	1	12603	Home	Auto/Motorcycle		1 Garage/Lot Nearby	Walk	1 - 2 hours	0
Survey 278	Walkway on Hudson	12:55 PM	1	12413	Home	Auto/Motorcycle		2 Garage/Lot Nearby	Sightseeing	less than 1 hour	0
Survey 279	Walkway on Hudson	1:00 PM	1	12603	Home	Auto/Motorcycle		3 Garage/Lot Nearby	Walk	1 - 2 hours	0
Survey 280	Walkway on Hudson	1:05 PM	1	12603	Home	Auto/Motorcycle		1 Garage/Lot Nearby	Bike Riding	1 - 2 hours	0
Survey 281	Walkway on Hudson	1:07 PM	1	12601	Home	Walk/Bike	#N/A	#N/A	Bike Riding	1 - 2 hours	0
Survey 282	Walkway on Hudson	1:09 PM	1	12601	Home	Walk/Bike	#N/A	#N/A	Walk	less than 1 hour	0
Survey 283	Walkway on Hudson	1:11 PM	1	12528	Home	Auto/Motorcycle		1 Garage/Lot Nearby	Walk	less than 1 hour	0
Survey 284	Walkway on Hudson	1:14 PM	1	12518	Home	Auto/Motorcycle		2 Garage/Lot Nearby	Event	1 - 2 hours	cw
Survey 285	Walkway on Hudson	1:17 PM	1	12601	Home	#N/A	#N/A	#N/A	#N/A	#N/A	0
Survey 286	Walkway on Hudson	1:20 PM	1	12603	Home	Auto/Motorcycle		2 Garage/Lot Nearby	Bike Riding	1 - 2 hours	0
Survey 287	Walkway on Hudson	1:21 PM	1	12601	Home	Walk/Bike	#N/A	#N/A	General Recreation	1 - 2 hours	0
Survey 288	Walkway on Hudson	1:24 PM	1	12601	Home	Walk/Bike	#N/A	#N/A	Walk	1 - 2 hours	0
Survey 289	Walkway on Hudson	1:27 PM	1	12601	Home	Walk/Bike	#N/A	#N/A	Walk	1 - 2 hours	0
Survey 290	Walkway on Hudson	1:29 PM	1	12601	Home	Walk/Bike	#N/A	#N/A	Bike Riding	1 - 2 hours	0
Survey 291	Walkway on Hudson	1:31 PM	1	00000	Home	Auto/Motorcycle		3 Garage/Lot Nearby	Bike Riding	1 - 2 hours	0
Survey 292	Walkway on Hudson	1:33 PM	1	00000	Home	Auto/Motorcycle		2 Garage/Lot Nearby	Event	1 - 2 hours	cw
Survey 293	Walkway on Hudson	1:37 PM	1	00000	Home	Auto/Motorcycle		1 Garage/Lot Nearby	Walk	1 - 2 hours	0
Survey 294	Walkway on Hudson	1:40 PM	1	00000	Home	Rail	#N/A	#N/A	Bike Riding	1 - 2 hours	0
Survey 295	Walkway on Hudson	1:41 PM	1	12601	Home	Auto/Motorcycle		1 Garage/Lot Nearby	General Recreation	less than 1 hour	0
Survey 296	Walkway on Hudson	1:44 PM	1	12601	Home	Walk/Bike	#N/A	#N/A	Bike Riding	1 - 2 hours	0
Survey 297	Walkway on Hudson	1:47 PM	1	12569	Home	Auto/Motorcycle		2 Garage/Lot Nearby	General Recreation	1 - 2 hours	0

Survey 298	Walkway on Hudson	1:51 PM	1	12601	Home	Walk/Bike	#N/A	#N/A	General Recreation	less than 1 hour	0
Survey 299	Walkway on Hudson	1:55 PM	1	12601	Home	Walk/Bike	#N/A	#N/A	Bike Riding	1 - 2 hours	0
Survey 300	Walkway on Hudson	1:57 PM	1	12601	Home	Walk/Bike	#N/A	#N/A	Walk	less than 1 hour	0
Survey 301	Walkway on Hudson	2:00 PM	1	12603	Home	Auto/Motorcycle		2 Garage/Lot Nearby	Event	1 - 2 hours	0
Survey 302	Walkway on Hudson	2:01 PM	1	12603	Home	Auto/Motorcycle		1 Garage/Lot Nearby	General Recreation	less than 1 hour	0
Survey 303	Walkway on Hudson	2:02 PM	1	12578	Home	Auto/Motorcycle		2 Garage/Lot Nearby	Event	1 - 2 hours	0
Survey 304	Walkway on Hudson	2:11 PM	1	12601	Home	Auto/Motorcycle		1 Garage/Lot Nearby	Bike Riding	1 - 2 hours	0
Survey 305	Walkway on Hudson	2:14 PM	1	12601	Home	Walk/Bike	#N/A	#N/A	General Recreation	less than 1 hour	0
Survey 306	Walkway on Hudson	2:17 PM	1	12601	Home	Walk/Bike	#N/A	#N/A	General Recreation	less than 1 hour	0
Survey 307	Walkway on Hudson	2:22 PM	1	12532	Home	Auto/Motorcycle		1 Other	Event	1 - 2 hours	cw
Survey 308	Walkway on Hudson	2:27 PM	1	12603	Home	Auto/Motorcycle		2 Garage/Lot Nearby	Event	1 - 2 hours	0
Survey 309	Walkway on Hudson	2:31 PM	1	12601	Home	Walk/Bike	#N/A	#N/A	General Recreation	less than 1 hour	0
Survey 310	Walkway on Hudson	2:32 PM	1	12601	Home	Walk/Bike	#N/A	#N/A	Walk	less than 1 hour	0
Survey 311	Walkway on Hudson	2:37 PM	1	12417	Home	Auto/Motorcycle		2 Garage/Lot Nearby	Event	1 - 2 hours	0
Survey 312	Walkway on Hudson	2:41 PM	1	12601	Home	Auto/Motorcycle		2 Garage/Lot Nearby	General Recreation	less than 1 hour	0
Survey 313	Walkway on Hudson	2:44 PM	1	12601	Home	Walk/Bike	#N/A	#N/A	Walk	less than 1 hour	0
Survey 314	Walkway on Hudson	2:45 PM	1	12601	Home	Walk/Bike	#N/A	#N/A	General Recreation	#N/A	0
Survey 315	Walkway on Hudson	2:49 PM	1	12528	Home	Auto/Motorcycle		1 Other	0 1 - 2 hours	0	0
Survey 316	Walkway on Hudson	2:51 PM	1	12601	Home	#N/A	#N/A	#N/A	#N/A	0	0
Survey 317	Walkway on Hudson	2:55 PM	1	12603	Home	Auto/Motorcycle		1 Garage/Lot Nearby	General Recreation	less than 1 hour	0
Survey 318	Walkway on Hudson	2:57 PM	1	12601	Home	Walk/Bike	#N/A	#N/A	General Recreation	less than 1 hour	0
Survey 319	Rockland Park	8:12 AM	1	10920	Home	Auto/Motorcycle		4 Other	Event	1 - 2 hours	Racing
Survey 320	Rockland Park	8:13 AM	4	10920	Home	Walk/Bike	#N/A	On-Street Nearby	Event	1 - 2 hours	Racing
Survey 321	Rockland Park	8:21 AM	1	10920	Home	Auto/Motorcycle		2 Park	Event	2 - 3 hours	Racing
Survey 322	Rockland Park	8:30 AM	1	10970	#N/A	Auto/Motorcycle		1 Garage/Lot Nearby	Event	less than 1 hour	Racing
Survey 323	Rockland Park	8:35 AM	1	00000	Home	Auto/Motorcycle		4 Garage/Lot Nearby	Event	#N/A	Racing
Survey 324	Rockland Park	8:49 AM	1	10924	Home	Auto/Motorcycle		2 Garage/Lot Nearby	Event	2 - 3 hours	Racing
Survey 325	Rockland Park	9:40 AM	1	10950	#N/A	Auto/Motorcycle		2 Garage/Lot Nearby	Event	1 - 2 hours	Racing
Survey 326	Rockland Park	9:58 AM	1	00000	Home	Auto/Motorcycle		2 Garage/Lot Nearby	General Recreation	1 - 2 hours	0
Survey 327	Rockland Park	10:01 AM	1	10920	Home	Auto/Motorcycle		1 Pkg Lot Survey Loc. 1	General Recreation	1 - 2 hours	0
Survey 328	Rockland Park	10:04 AM	1	00000	Home	Auto/Motorcycle		2 Pkg Lot Survey Loc. 1	General Recreation	1 - 2 hours	0
Survey 329	Rockland Park	10:20 AM	1	10954	Home	Auto/Motorcycle		2 Garage/Lot Nearby	Event	1 - 2 hours	Racing
Survey 330	Rockland Park	10:28 AM	1	10954	Home	Auto/Motorcycle		3 Garage/Lot Nearby	Event	1 - 2 hours	Racing
Survey 331	Rockland Park	10:29 AM	1	10989	#N/A	Auto/Motorcycle		1 Garage/Lot Nearby	Event	3 - 4 hours	Racing
Survey 332	Rockland Park	10:30 AM	1	10956	#N/A	Auto/Motorcycle		1 Garage/Lot Nearby	Event	3 - 4 hours	Racing
Survey 333	Rockland Park	10:42 AM	1	10956	Home	Auto/Motorcycle		1 Garage/Lot Nearby	General Recreation	2 - 3 hours	0
Survey 334	Rockland Park	10:45 AM	1	10005	#N/A	Auto/Motorcycle		1 Garage/Lot Nearby	General Recreation	less than 1 hour	0
Survey 335	Rockland Park	10:58 AM	1	10977	Home	Auto/Motorcycle		1 Garage/Lot Nearby	General Recreation	less than 1 hour	0
Survey 336	Rockland Park	11:42 AM	1	10965	Home	Auto/Motorcycle		2 Garage/Lot Nearby	General Recreation	1 - 2 hours	0
Survey 337	Rockland Park	11:45 AM	1	10989	Home	Auto/Motorcycle		2 Garage/Lot Nearby	General Recreation	less than 1 hour	0
Survey 338	Rockland Park	12:04 PM	1	10927	Home	Auto/Motorcycle		2 Garage/Lot Nearby	General Recreation	1 - 2 hours	0
Survey 339	Rockland Park	12:21 PM	1	07650	#N/A	Auto/Motorcycle		3 Garage/Lot Nearby	General Recreation	1 - 2 hours	0
Survey 340	Rockland Park	12:25 PM	1	10977	#N/A	Auto/Motorcycle		3 Garage/Lot Nearby	General Recreation	1 - 2 hours	0
Survey 341	Rockland Park	12:28 PM	1	10956	Home	Auto/Motorcycle		2 Garage/Lot Nearby	General Recreation	1 - 2 hours	0
Survey 342	Rockland Park	12:41 PM	1	10956	Home	Auto/Motorcycle		2 Garage/Lot Nearby	General Recreation	less than 1 hour	0
Survey 343	Rockland Park	1:10 PM	1	10960	Home	Auto/Motorcycle		2 #N/A	General Recreation	less than 1 hour	0
Survey 344	Rockland Park	1:29 PM	1	10956	Home	Auto/Motorcycle		4 #N/A	General Recreation	1 - 2 hours	0
Survey 345	Rockland Park	1:35 PM	1	00000	Home	Auto/Motorcycle		6 #N/A	General Recreation	2 - 3 hours	0
Survey 346	Rockland Park	2:10 PM	1	10960	Home	Auto/Motorcycle		2 #N/A	General Recreation	less than 1 hour	0
Survey 347	Rockland Park	8:15 AM	1	10920	Home	Auto/Motorcycle		1 On-Street Remotely	Event	4 or more hours	0

Survey 348	Rockland Park	8:17 AM	1	10954	Home	Auto/Motorcycle		1 On-Street Nearby	Event	2 - 3 hours	0
Survey 349	Rockland Park	8:57 AM	1	07017	Home	Walk/Bike	#N/A	#N/A	General Recreation	less than 1 hour	0
Survey 350	Rockland Park	9:00 AM	1	10960	Home	Auto/Motorcycle		1 On-Street Nearby	General Recreation	1 - 2 hours	0
Survey 351	Rockland Park	9:03 AM	1	10994	Home	Auto/Motorcycle		1 On-Street Nearby	General Recreation	2 - 3 hours	0
Survey 352	Rockland Park	9:32 AM	1	10989	Home	Auto/Motorcycle		1 On-Street Nearby	General Recreation	2 - 3 hours	0
Survey 353	Rockland Park	9:50 AM	1	10960	Home	Auto/Motorcycle		2 On-Street Nearby	General Recreation	1 - 2 hours	0
Survey 354	Rockland Park	10:10 AM	1	07017	Home	Walk/Bike	#N/A	#N/A	General Recreation	less than 1 hour	0
Survey 355	Rockland Park	10:15 AM	1	10952	Home	Auto/Motorcycle		3 On-Street Nearby	General Recreation	1 - 2 hours	0
Survey 356	Rockland Park	10:20 AM	1	10994	Home	Walk/Bike	#N/A	Garage/Lot Nearby	General Recreation	1 - 2 hours	0
Survey 357	Rockland Park	10:45 AM	1	10954	Home	Auto/Motorcycle		1 Lot A	General Recreation	1 - 2 hours	0
Survey 358	Rockland Park	10:45 AM	1	10920	Home	Auto/Motorcycle		1 Garage/Lot Nearby	General Recreation	1 - 2 hours	0
Survey 359	Rockland Park	11:30 AM	1	NYC	Home	Auto/Motorcycle		1 Garage/Lot Nearby	General Recreation	1 - 2 hours	0
Survey 360	Rockland Park	11:45 AM	1	10023	Home	Walk/Bike	#N/A	#N/A	Bike Riding	1 - 2 hours	0
Survey 361	Rockland Park	12:10 PM	1	10994	Home	Auto/Motorcycle		1 Garage/Lot Nearby	General Recreation	#N/A	0
Survey 362	Rockland Park	12:35 PM	1	10960	Home	Auto/Motorcycle		2 Garage/Lot Nearby	Bike Riding	1 - 2 hours	0
Survey 363	Rockland Park	12:40 PM	1	10989	Home	Auto/Motorcycle		1 Garage/Lot Nearby	General Recreation	1 - 2 hours	0
Survey 364	Rockland Park	1:02 PM	1	07645	Home	Auto/Motorcycle		1 On-Street Nearby	Bike Riding	1 - 2 hours	0
Survey 365	Rockland Park	1:18 PM	7	10023	Home	City Bus		7 Dropped-off	General Recreation	2 - 3 hours	0
Survey 366	Rockland Park	2:01 PM	1	10954	Home	Auto/Motorcycle		3 Garage/Lot Nearby	General Recreation	2 - 3 hours	0
Survey 367	Rockland Park	2:05 PM	1	10960	Home	Auto/Motorcycle		5 Garage/Lot Nearby	General Recreation	1 - 2 hours	0
Survey 368	Rockland Park	2:07 PM	1	10989	Home	Auto/Motorcycle		1 On-Street Nearby	General Recreation	1 - 2 hours	0
Survey 369	Rockland Park	2:22 PM	1	10960	Home	Auto/Motorcycle		2 On-Street Nearby	General Recreation	less than 1 hour	0
Survey 370	Rockland Park	2:43 PM	1	10994	Home	Auto/Motorcycle		1 Garage/Lot Nearby	General Recreation	1 - 2 hours	0
Survey 371	Nyack Beach	8:14 AM	1	Nyack	Home	Auto/Motorcycle		1 Garage/Lot Nearby	General Recreation	less than 1 hour	0
Survey 372	Nyack Beach	8:33 AM	1	Nyack	Home	Auto/Motorcycle		2 Garage/Lot Nearby	General Recreation	1 - 2 hours	0
Survey 373	Nyack Beach	8:59 AM	1	Nyack	Rockland L	Auto/Motorcycle		1 Garage/Lot Nearby	General Recreation	1 - 2 hours	0
Survey 374	Nyack Beach	9:08 AM	1	Nyack	Home	Auto/Motorcycle		2 Garage/Lot Nearby	General Recreation	1 - 2 hours	0
Survey 375	Nyack Beach	9:13 AM	1	Nyack	Home	Auto/Motorcycle		1 Garage/Lot Nearby	General Recreation	1 - 2 hours	Patrick Parietti
Survey 376	Nyack Beach	9:18 AM	1	Nyack	Home	Auto/Motorcycle		1 Garage/Lot Nearby	General Recreation	1 - 2 hours	Patrick Parietti
Survey 377	Nyack Beach	9:23 AM	1	Nyack	#N/A	Auto/Motorcycle		4 Garage/Lot Nearby	General Recreation	2 - 3 hours	Patrick Parietti
Survey 378	Nyack Beach	9:30 AM	1	Nyack	Rockland L	Auto/Motorcycle		1 Rockland Lake	General Recreation	3 - 4 hours	Patrick Parietti
Survey 379	Nyack Beach	9:32 AM	1	Nyack	Home	Walk/Bike	#N/A	#N/A	General Recreation	less than 1 hour	0
Survey 380	Nyack Beach	9:40 AM	1	Nyack	Home	Walk/Bike	#N/A	#N/A	General Recreation	less than 1 hour	0
Survey 381	Nyack Beach	9:50 AM	1	alley Cottag	Home	Auto/Motorcycle		1 Garage/Lot Nearby	General Recreation	2 - 3 hours	0
Survey 382	Nyack Beach	9:57 AM	1	Nyack	Home	Auto/Motorcycle		1 Garage/Lot Nearby	General Recreation	1 - 2 hours	0
Survey 383	Nyack Beach	10:00 AM	1	Nyack	Home	Walk/Bike	#N/A	#N/A	Bike Riding	1 - 2 hours	0
Survey 384	Nyack Beach	10:05 AM	1	South Nyack	Home	Auto/Motorcycle		1 Garage/Lot Nearby	General Recreation	less than 1 hour	0
Survey 385	Nyack Beach	10:09 AM	1	reenwich, C	Home	Auto/Motorcycle		1 On-Street Remotely	General Recreation	3 - 4 hours	0
Survey 386	Nyack Beach	10:12 AM	1	Bronxville	Home	Auto/Motorcycle		2 Garage/Lot Nearby	General Recreation	3 - 4 hours	0
Survey 387	Nyack Beach	10:17 AM	1	alley Cottag	Home	Auto/Motorcycle		2 Garage/Lot Nearby	General Recreation	less than 1 hour	0
Survey 388	Nyack Beach	10:22 AM	1	Jpper Nyack	Home	Walk/Bike	#N/A	#N/A	General Recreation	1 - 2 hours	0
Survey 389	Nyack Beach	10:25 AM	42	Staten Islan	Work	Rental Bus		42 Dropped-off	Field Trip	1 - 2 hours	0
Survey 390	Nyack Beach	10:29 AM	1	Tarrytown	Home	Auto/Motorcycle		1 Garage/Lot Nearby	General Recreation	2 - 3 hours	0
Survey 391	Nyack Beach	10:34 AM	1	Nyack	Home	Walk/Bike	#N/A	#N/A	General Recreation	1 - 2 hours	0
Survey 392	Nyack Beach	10:40 AM	1	10960	#N/A	Roller Skis	#N/A	#N/A	General Recreation	less than 1 hour	Don't see the Parks
Survey 393	Nyack Beach	10:45 AM	1	Queens	Home	Auto/Motorcycle		2 Garage/Lot Nearby	General Recreation	3 - 4 hours	0
Survey 394	Nyack Beach	10:49 AM	1	Nyack	Home	Walk/Bike	#N/A	#N/A	General Recreation	1 - 2 hours	0
Survey 395	Nyack Beach	10:53 AM	1	Nestcheste	Home	Auto/Motorcycle		4 Garage/Lot Nearby	General Recreation	1 - 2 hours	0
Survey 396	Nyack Beach	10:56 AM	1	New City	Home	Auto/Motorcycle		2 Garage/Lot Nearby	General Recreation	1 - 2 hours	0
Survey 397	Nyack Beach	11:02 AM	1	10989	Home	Auto/Motorcycle		1 Garage/Lot Nearby	General Recreation	4 or more hours	0

Survey 398	Nyack Beach	11:05 AM	1	Pearl River Home	Auto/Motorcycle		1 Garage/Lot Nearby	General Recreation	1 - 2 hours	0
Survey 399	Nyack Beach	11:09 AM	1	10960 Home	Auto/Motorcycle		2 Garage/Lot Nearby	General Recreation	1 - 2 hours	0
Survey 400	Nyack Beach	11:14 AM	1	Nyack Home	Auto/Motorcycle		1 Garage/Lot Nearby	General Recreation	1 - 2 hours	0
Survey 401	Nyack Beach	11:17 AM	1	Long Island Home	Auto/Motorcycle		4 Garage/Lot Nearby	General Recreation	less than 1 hour	0
Survey 402	Nyack Beach	11:19 AM	1	09807 Home	Auto/Motorcycle		1 Garage/Lot Nearby	General Recreation	2 - 3 hours	0
Survey 403	Nyack Beach	11:30 AM	1	Bardonia Home	Auto/Motorcycle		2 Garage/Lot Nearby	Bike Riding	4 or more hours	0
Survey 404	Nyack Beach	11:41 AM	1	Suffern Home	Auto/Motorcycle		2 Garage/Lot Nearby	General Recreation	less than 1 hour	0
Survey 405	Nyack Beach	11:43 AM	1	10956 Home	Auto/Motorcycle		2 Garage/Lot Nearby	General Recreation	1 - 2 hours	0
Survey 406	Nyack Beach	11:48 AM	1	10960 Home	Walk/Bike	#N/A	#N/A	General Recreation	1 - 2 hours	0
Survey 407	Nyack Beach	11:55 AM	1	10562 Home	Auto/Motorcycle		2 Garage/Lot Nearby	General Recreation	1 - 2 hours	0
Survey 408	Nyack Beach	12:01 PM	1	09091 Home	Auto/Motorcycle		1 Garage/Lot Nearby	General Recreation	1 - 2 hours	0
Survey 409	Nyack Beach	12:04 PM	1	10923 Home	Auto/Motorcycle		2 Garage/Lot Nearby	General Recreation	2 - 3 hours	0
Survey 410	Nyack Beach	12:13 PM	1	10960 Home	Auto/Motorcycle		4 Garage/Lot Nearby	General Recreation	3 - 4 hours	0
Survey 411	Nyack Beach	12:16 PM	1	10960 Home	Auto/Motorcycle		1 Garage/Lot Nearby	General Recreation	1 - 2 hours	0
Survey 412	Nyack Beach	12:18 PM	1	10056 Home	Auto/Motorcycle		2 Garage/Lot Nearby	General Recreation	1 - 2 hours	0
Survey 413	Nyack Beach	12:32 PM	1	07675 Home	Auto/Motorcycle		2 Garage/Lot Nearby	General Recreation	1 - 2 hours	0
Survey 414	Nyack Beach	12:43 PM	1	07039 Other Attra	Auto/Motorcycle		2 Garage/Lot Nearby	General Recreation	1 - 2 hours	0
Survey 415	Nyack Beach	12:49 PM	1	07039 Other Attra	Auto/Motorcycle		2 Garage/Lot Nearby	General Recreation	1 - 2 hours	0
Survey 416	Nyack Beach	12:56 PM	1	10986 Home	Auto/Motorcycle		1 Garage/Lot Nearby	General Recreation	less than 1 hour	0
Survey 417	Nyack Beach	12:59 PM	1	10986 Home	Auto/Motorcycle		1 Garage/Lot Nearby	Boat House Cleanup	less than 1 hour	0
Survey 418	Nyack Beach	1:02 PM	1	10923 Home	Auto/Motorcycle		2 Garage/Lot Remotely	General Recreation	2 - 3 hours	0
Survey 419	Nyack Beach	1:10 PM	1	07906 Home	Auto/Motorcycle		5 Garage/Lot Nearby	Fishing	4 or more hours	0
Survey 420	Nyack Beach	1:17 PM	1	07645 Home	Auto/Motorcycle		4 Garage/Lot Nearby	General Recreation	1 - 2 hours	0
Survey 421	Nyack Beach	1:22 PM	1	10960 Home	Walk/Bike	#N/A	#N/A	General Recreation	less than 1 hour	0
Survey 422	Nyack Beach	1:24 PM	1	10960 Home	Walk/Bike	#N/A	#N/A	General Recreation	less than 1 hour	0
Survey 423	Nyack Beach	1:25 PM	1	10920 Home	Auto/Motorcycle		2 Garage/Lot Nearby	General Recreation	2 - 3 hours	0
Survey 424	Nyack Beach	1:34 PM	1	10960 #N/A	Auto/Motorcycle		3 Garage/Lot Nearby	General Recreation	1 - 2 hours	0
Survey 425	Nyack Beach	1:48 PM	1	07084 Home	Auto/Motorcycle		5 Garage/Lot Nearby	General Recreation	1 - 2 hours	0
Survey 426	Nyack Beach	1:59 PM	1	00000 Home	Auto/Motorcycle		2 Garage/Lot Nearby	Bike Riding	1 - 2 hours	0
Survey 427	Nyack Beach	2:12 PM	1	10956 Home	Auto/Motorcycle		2 Garage/Lot Nearby	Picnic	1 - 2 hours	0
Survey 428	Nyack Beach	2:34 PM	1	10977 Work	Auto/Motorcycle		3 Garage/Lot Nearby	General Recreation	1 - 2 hours	0
Survey 429	Nyack Beach	2:39 PM	1	10960 Home	Auto/Motorcycle		1 Garage/Lot Nearby	General Recreation	less than 1 hour	0
Survey 430	Nyack Beach	2:51 PM	1	10956 Home	Auto/Motorcycle		3 Garage/Lot Nearby	General Recreation	less than 1 hour	0
Survey 431	Bear Mountain Bridge	8:36 AM	1	00000 Home	Auto/Motorcycle		2 Across the Bridge	General Recreation	1 - 2 hours	0
Survey 432	Bear Mountain Bridge	10:15 AM	1	00000 Home	Auto/Motorcycle		2 Garage/Lot Nearby	General Recreation	4 or more hours	0
Survey 433	Bear Mountain Bridge	10:22 AM	1	00000 Home	Auto/Motorcycle		1	0 General Recreation	1 - 2 hours	0
Survey 434	Bear Mountain Bridge	11:59 AM	1	Connecticut Connecticut	Auto/Motorcycle		3 State Park	General Recreation	4 or more hours	0
Survey 435	Bear Mountain Bridge	12:39 PM	1	00000 Home	Auto/Motorcycle		1 Garage/Lot Remotely	Event	2 - 3 hours	0
Survey 436	Bear Mountain Bridge	12:49 PM	1	00000 Home	Walk/Bike	#N/A	#N/A	Vacation	2 - 3 hours	0
Survey 437	Bear Mountain Bridge	12:59 PM	1	New Jersey New Jersey	Auto/Motorcycle		1 In the Park	General Recreation	2 - 3 hours	0
Survey 438	Bear Mountain Bridge	1:16 PM	1	00000 Home	Auto/Motorcycle		4 Across the River	General Recreation	2 - 3 hours	0
Survey 439	Bear Mountain Bridge	1:19 PM	1	00000 Home	Auto/Motorcycle		2 Garage/Lot Nearby	General Recreation	1 - 2 hours	0
Survey 440	Bear Mountain Bridge	1:30 PM	1	00000 Home	Auto/Motorcycle		1 On-Street Nearby	General Recreation	1 - 2 hours	0
Survey 441	Bear Mountain Bridge	1:33 PM	1	00000 Home	Auto/Motorcycle		3 On-Street Nearby	General Recreation	less than 1 hour	0
Survey 442	Bear Mountain Bridge	1:40 PM	1	00000 Home	Auto/Motorcycle		2 On-Street Nearby	General Recreation	3 - 4 hours	0
Survey 443	Bear Mountain Bridge	2:20 PM	1	00000 Home	Auto/Motorcycle		2 On-Street Nearby	General Recreation	1 - 2 hours	0
Survey 444	Bear Mountain Bridge	2:35 PM	1	Belmont Belmont	Walk/Bike	#N/A	#N/A	General Recreation	3 - 4 hours	0
Survey 445	Bear Mountain Bridge	3:03 PM	1	00000 Home	Auto/Motorcycle		2 On-Street Nearby	General Recreation	3 - 4 hours	0
Survey 446	Bear Mountain Bridge	3:15 PM	1	00000 Home	Auto/Motorcycle	#N/A	Garage/Lot Nearby	General Recreation	4 or more hours	0
Survey 447	Bear Mountain Bridge	3:20 PM	1	New Jersey New Jersey	Auto/Motorcycle		6 On-Street Nearby	General Recreation	1 - 2 hours	0

Survey 448	Bear Mountain Bridge	3:36 PM	1	00000	School/Shc	Walk/Bike	#N/A	#N/A	Bike Riding	1 - 2 hours	0
Survey 449	Newburgh-Beacon Bridge	8:07 AM	1	12556	Home	Auto/Motorcycle	2	Garage/Lot Remotely	Walk	1 - 2 hours	0
Survey 450	Newburgh-Beacon Bridge	8:08 AM	1	12556	Home	Auto/Motorcycle	2	Garage/Lot Remotely	Walk	1 - 2 hours	0
Survey 451	Newburgh-Beacon Bridge	8:14 AM	1	12550	Home	Walk/Bike	#N/A	#N/A	General Recreation	2 - 3 hours	0
Survey 452	Newburgh-Beacon Bridge	8:30 AM	1	12550	Home	Walk/Bike	#N/A	#N/A	General Recreation	1 - 2 hours	0
Survey 453	Newburgh-Beacon Bridge	9:06 AM	1	12550	Home	Auto/Motorcycle	1	Garage/Lot Remotely	General Recreation	less than 1 hour	0
Survey 454	Newburgh-Beacon Bridge	9:32 AM	1	12544	Home	Auto/Motorcycle	2	Garage/Lot Remotely	General Recreation	1 - 2 hours	0
Survey 455	Newburgh-Beacon Bridge	9:44 AM	1	12601	Home	Walk/Bike	#N/A	#N/A	General Recreation	less than 1 hour	0
Survey 456	Newburgh-Beacon Bridge	9:53 AM	1	12508	Home	Walk/Bike	#N/A	#N/A	Walking	less than 1 hour	0
Survey 457	Newburgh-Beacon Bridge	10:08 AM	1	12550	Home	Auto/Motorcycle	5	Garage/Lot Remotely	General Recreation	1 - 2 hours	0
Survey 458	Newburgh-Beacon Bridge	10:11 AM	1	12553	Home	Auto/Motorcycle	2	Garage/Lot Nearby	General Recreation	less than 1 hour	0
Survey 459	Newburgh-Beacon Bridge	10:22 AM	1	12508	Home	Walk/Bike	#N/A	#N/A	General Recreation	1 - 2 hours	0
Survey 460	Newburgh-Beacon Bridge	11:38 AM	1	12533	Work	Walk/Bike	#N/A	#N/A	General Recreation	1 - 2 hours	0
Survey 461	Newburgh-Beacon Bridge	11:53 AM	1	12508	Home	Walk/Bike	#N/A	#N/A	General Recreation	1 - 2 hours	0
Survey 462	Newburgh-Beacon Bridge	11:56 AM	1	12508	Home	Walk/Bike	#N/A	#N/A	General Recreation	3 - 4 hours	0
Survey 463	Newburgh-Beacon Bridge	11:59 AM	1	11944	Home	Walk/Bike	#N/A	#N/A	General Recreation	3 - 4 hours	0
Survey 464	Newburgh-Beacon Bridge	12:08 PM	1	12550	Home	Auto/Motorcycle	1	Garage/Lot Remotely	General Recreation	1 - 2 hours	0
Survey 465	Newburgh-Beacon Bridge	12:11 PM	1	12550	Work	Walk/Bike	#N/A	#N/A	General Recreation	1 - 2 hours	0
Survey 466	Newburgh-Beacon Bridge	12:28 PM	1	12477	Home	Auto/Motorcycle	1	Garage/Lot Nearby	General Recreation	less than 1 hour	0
Survey 467	Newburgh-Beacon Bridge	12:41 PM	1	12553	Home	Walk/Bike	#N/A	#N/A	General Recreation	2 - 3 hours	0
Survey 468	Newburgh-Beacon Bridge	1:12 PM	1	12550	Home	Walk/Bike	#N/A	#N/A	General Recreation	2 - 3 hours	0
Survey 469	Newburgh-Beacon Bridge	1:30 PM	1	12508	Home	Auto/Motorcycle	2	Garage/Lot Remotely	General Recreation	1 - 2 hours	0
Survey 470	Newburgh-Beacon Bridge	1:34 PM	1	10918	Home	Walk/Bike	#N/A	#N/A	Bike Riding	4 or more hours	0
Survey 471	Newburgh-Beacon Bridge	1:41 PM	1	12550	Home	Auto/Motorcycle	2	Garage/Lot Remotely	General Recreation	1 - 2 hours	0
Survey 472	Newburgh-Beacon Bridge	1:44 PM	1	12508	Home	Walk/Bike	#N/A	#N/A	General Recreation	1 - 2 hours	0
Survey 473	Newburgh-Beacon Bridge	1:55 PM	1	12508	Appointment	Auto/Motorcycle	2	Garage/Lot Nearby	General Recreation	less than 1 hour	0
Survey 474	Newburgh-Beacon Bridge	2:52 PM	1	12550	Home	Walk/Bike	#N/A	#N/A	General Recreation	1 - 2 hours	0
Survey 475	Rip Van Winkle Bridge	8:35 AM	1	08138	Home	Walk/Bike	#N/A	Other	General Recreation	4 or more hours	0
Survey 476	Rip Van Winkle Bridge	8:36 AM	1	12571	Home	Walk/Bike	#N/A	Other	General Recreation	4 or more hours	0
Survey 477	Rip Van Winkle Bridge	8:37 AM	1	12054	Home	Walk/Bike	#N/A	Other	General Recreation	4 or more hours	0
Survey 478	Rip Van Winkle Bridge	8:39 AM	1	12572	Home	Walk/Bike	#N/A	Other	General Recreation	4 or more hours	0
Survey 479	Rip Van Winkle Bridge	8:41 AM	1	06810	Home	Walk/Bike	#N/A	Other	General Recreation	4 or more hours	0
Survey 480	Rip Van Winkle Bridge	8:42 AM	1	12087	Home	Walk/Bike	#N/A	Other	General Recreation	4 or more hours	0
Survey 481	Rip Van Winkle Bridge	8:44 AM	1	10992	Home	Walk/Bike	#N/A	Other	General Recreation	4 or more hours	0
Survey 482	Rip Van Winkle Bridge	8:45 AM	1	12015	Home	Walk/Bike	#N/A	Other	General Recreation	4 or more hours	0
Survey 483	Rip Van Winkle Bridge	8:46 AM	1	12440	Home	Walk/Bike	#N/A	Other	General Recreation	4 or more hours	0
Survey 484	Rip Van Winkle Bridge	9:47 AM	1	12414	Home	Walk/Bike	#N/A	Other	General Recreation	1 - 2 hours	0
Survey 485	Rip Van Winkle Bridge	10:17 AM	1	12414	Home	Walk/Bike	#N/A	#N/A	General Recreation	1 - 2 hours	0
Survey 486	Rip Van Winkle Bridge	10:24 AM	1	12414	Home	Walk/Bike	#N/A	#N/A	General Recreation	1 - 2 hours	0
Survey 487	Rip Van Winkle Bridge	10:58 AM	1	12451	Home	Walk/Bike	#N/A	#N/A	General Recreation	1 - 2 hours	0
Survey 488	Rip Van Winkle Bridge	11:01 AM	2	12414	Home	Walk/Bike	#N/A	Other	General Recreation	1 - 2 hours	0
Survey 489	Rip Van Winkle Bridge	11:04 AM	3	07036	Home	Walk/Bike	#N/A	Other	General Recreation	less than 1 hour	0
Survey 490	Rip Van Winkle Bridge	11:30 AM	1	12414	Home	Walk/Bike	#N/A	Other	General Recreation	less than 1 hour	0
Survey 491	Rip Van Winkle Bridge	11:33 AM	4	12513	Home	Walk/Bike	#N/A	#N/A	#N/A	less than 1 hour	0
Survey 492	Rip Van Winkle Bridge	11:39 AM	1	12414	Home	Walk/Bike	#N/A	Other	General Recreation	less than 1 hour	0
Survey 493	Rip Van Winkle Bridge	11:45 AM	1	12414	Home	Walk/Bike	#N/A	#N/A	#N/A	less than 1 hour	0
Survey 494	Rip Van Winkle Bridge	11:46 AM	2	12414	Home	Walk/Bike	#N/A	Other	General Recreation	less than 1 hour	0
Survey 495	Rip Van Winkle Bridge	12:20 PM	1	12414	Home	Walk/Bike	#N/A	#N/A	General Recreation	2 - 3 hours	0
Survey 496	Rip Van Winkle Bridge	1:47 PM	1	12414	Home	Auto/Motorcycle	1	On-Street Nearby	General Recreation	less than 1 hour	0
Survey 497	Rip Van Winkle Bridge	1:48 PM	1	12603	Home	Auto/Motorcycle	1	On-Street Nearby	General Recreation	less than 1 hour	0

Survey 498	Rip Van Winkle Bridge	2:19 PM	1	11218	Home	Auto/Motorcycle	1 Other	General Recreation	4 or more hours	0
Survey 499	Rip Van Winkle Bridge	2:39 PM	1	12414	Home	Walk/Bike	#N/A #N/A	General Recreation	less than 1 hour	0
Survey 500	Rip Van Winkle Bridge	2:55 PM	2	11514	Home	Auto/Motorcycle	2 On-Street Nearby	General Recreation	less than 1 hour	0
Survey 501	GWB	12:00 AM	1	07621	Home	Auto/Motorcycle	1 On-Street Nearby	Work	4 or more hours	0
Survey 502	GWB	12:00 AM	1	10033	64 to the b	City Bus	#N/A #N/A	General Recreation	4 or more hours	0
Survey 503	GWB	12:00 AM	1	10033	Home	Walk/Bike	#N/A #N/A	Pick up rental car	less than 1 hour	0
Survey 504	GWB	12:00 AM	1	11731	School/Shc	City Bus	#N/A #N/A	General Recreation	4 or more hours	0
Survey 505	GWB	12:00 AM	1	07646	Home	Auto/Motorcycle	1 On-Street Nearby	Historic photos of bridge	3 - 4 hours	0
Survey 506	GWB	12:00 AM	1	10023	Home	Walk/Bike	#N/A #N/A	Bike Riding	1 - 2 hours	0
Survey 507	GWB	12:00 AM	1	10033	Home	Walk/Bike	#N/A #N/A	Work	4 or more hours	0
Survey 508	GWB	12:00 AM	1	07631	Other Attra	Walk/Bike	#N/A #N/A	General Recreation	less than 1 hour	0
Survey 509	GWB	12:00 AM	1	10024	Home	Rail	#N/A #N/A	General Recreation	1 - 2 hours	0
Survey 510	GWB	12:00 AM	1	10033	#N/A	Walk/Bike	#N/A #N/A	General Recreation	less than 1 hour	0
Survey 511	GWB	12:00 AM	1	07644	Home	Auto/Motorcycle	2 On-Street Nearby	General Recreation	less than 1 hour	0
Survey 512	GWB	12:00 AM	1	10033	Home	Walk/Bike	#N/A #N/A	General Recreation	less than 1 hour	0
Survey 513	GWB	12:00 AM	1	07065	Home	Walk/Bike	#N/A #N/A	Event	4 or more hours	0
Survey 514	GWB	12:00 AM	1	10033	Home	Walk/Bike	#N/A #N/A	Bike Riding	1 - 2 hours	0
Survey 515	GWB	12:00 AM	1	10001	Home	Walk/Bike	#N/A #N/A	Work	4 or more hours	0
Survey 516	GWB	12:00 AM	1	00000	#N/A	Walk/Bike	#N/A #N/A	Work	4 or more hours	0
Survey 517	GWB	12:00 AM	1	10032	Home	Walk/Bike	#N/A #N/A	General Recreation	1 - 2 hours	0
Survey 518	GWB	12:00 AM	1	10455	Home	City Bus	#N/A #N/A	Visiting Family	3 - 4 hours	0
Survey 519	GWB	12:00 AM	1	10033	Home	Walk/Bike	#N/A #N/A	Other	1 - 2 hours	0
Survey 520	GWB	12:00 AM	1	10956	Home	Auto/Motorcycle	1 Garage/Lot Nearby	General Recreation	2 - 3 hours	0
Survey 521	GWB	12:00 AM	1	07024	Home	Walk/Bike	#N/A #N/A	General Recreation	less than 1 hour	0
Survey 522	GWB	12:00 AM	1	07024	Home	Walk/Bike	#N/A #N/A	General Recreation	1 - 2 hours	0
Survey 523	GWB	12:00 AM	1	07631	Home	Walk/Bike	#N/A #N/A	General Recreation	4 or more hours	0
Survey 524	GWB	12:00 AM	1	10033	Home	Walk/Bike	#N/A #N/A	General Recreation	less than 1 hour	0
Survey 525	GWB	12:00 AM	1	10024	Home	Walk/Bike	#N/A #N/A	Visit Family	4 or more hours	0
Survey 526	GWB	12:00 AM	1	07631	Home	Walk/Bike	#N/A #N/A	General Recreation	4 or more hours	0
Survey 527	GWB	12:00 AM	1	10024	Home	Subway/Rail	#N/A #N/A	Renting a Car	2 - 3 hours	0
Survey 528	GWB	12:00 AM	1	10027	#N/A	Walk/Bike	#N/A #N/A	Bike Riding	3 - 4 hours	0
Survey 529	GWB	12:00 AM	1	10025	Home	Walk/Bike	#N/A #N/A	Bike Riding	3 - 4 hours	0
Survey 530	GWB	12:00 AM	1	07052	Home	Auto/Motorcycle	2 Other	General Recreation	2 - 3 hours	0
Survey 531	GWB	12:00 AM	1	07024	Home	Auto/Motorcycle	2 On-Street Nearby	General Recreation	less than 1 hour	0
Survey 532	GWB	12:00 AM	1	10033	Home	Walk/Bike	#N/A #N/A	General Recreation	3 - 4 hours	0
Survey 533	GWB	12:00 AM	1	07652	Home	Auto/Motorcycle	2 Historical Park	General Recreation	1 - 2 hours	0
Survey 534	GWB	12:00 AM	1	10023	Home	Subway/Rail	#N/A #N/A	General Recreation	4 or more hours	0
Survey 535	GWB	12:00 AM	1	07605	Other	Auto/Motorcycle	5 Dropped-off	General Recreation	4 or more hours	0
Survey 536	GWB	12:00 AM	1	07024	Home	Auto/Motorcycle	1 On-Street Nearby	General Recreation	3 - 4 hours	0
Survey 537	GWB	12:00 AM	1	10033	Home	Walk/Bike	#N/A #N/A	#N/A	1 - 2 hours	0
Survey 538	GWB	12:00 AM	1	10462	Home	Taxi/Service Car	1 #N/A	General Recreation	less than 1 hour	0
Survey 539	GWB	12:00 AM	1	07306	Work	Auto/Motorcycle	1 On-Street Nearby	Bike Riding	less than 1 hour	0
Survey 540	GWB	12:00 AM	1	10027	Volunteerir	Subway/Rail	#N/A #N/A	Transit	1 - 2 hours	0
Survey 541	GWB	12:00 AM	1	02301	Home	Walk/Bike	#N/A #N/A	Picnic	4 or more hours	0
Survey 542	GWB	12:00 AM	1	06460	Home	Auto/Motorcycle	3 On-Street Nearby	General Recreation	2 - 3 hours	0
Survey 543	GWB	12:00 AM	1	10021	Hotel	Walk/Bike	#N/A #N/A	General Recreation	4 or more hours	0
Survey 544	GWB	12:00 AM	1	10021	Home	Walk/Bike	#N/A #N/A	Bike Riding	1 - 2 hours	0
Survey 545	GWB	12:00 AM	1	07605	Home	Auto/Motorcycle	3 On-Street Nearby	General Recreation	less than 1 hour	0
Survey 546	GWB	12:00 AM	1	07605	Home	City Bus	#N/A #N/A	General Recreation	4 or more hours	0
Survey 547	GWB	12:00 AM	1	10033	Home	Walk/Bike	#N/A #N/A	General Recreation	less than 1 hour	0

Survey 548	GWB	12:00 AM	1	10033	Home	Walk/Bike	#N/A	#N/A	General Recreation	less than 1 hour	0
Survey 549	GWB	12:00 AM	1	07024	Home	Walk/Bike	#N/A	#N/A	General Recreation	1 - 2 hours	0
Survey 550	GWB	12:00 AM	1	10023	Home	Walk/Bike	#N/A	#N/A	Bike Riding	less than 1 hour	0
Survey 551	GWB	12:00 AM	1	10033	Other Attra	Walk/Bike	#N/A	#N/A	General Recreation	1 - 2 hours	0
Survey 552	GWB	12:00 AM	1	07024	Hotel	Walk/Bike	#N/A	#N/A	General Recreation	4 or more hours	0
Survey 553	GWB	12:00 AM	1	07621	Home	Auto/Motorcycle	3 On-Street Nearby		General Recreation	less than 1 hour	0
Survey 554	GWB	12:00 AM	1	10033	Home	Walk/Bike	#N/A	#N/A	General Recreation	less than 1 hour	0
Survey 555	GWB	12:00 AM	1	10001	Work	Subway/rail	#N/A	#N/A	Going Home	less than 1 hour	0
Survey 556	GWB	12:00 AM	1	07030	#N/A	Auto/Motorcycle	4 On-Street Nearby		General Recreation	1 - 2 hours	0
Survey 557	GWB	12:00 AM	1	10027	Home	Walk/Bike	#N/A	#N/A	Bike Riding	1 - 2 hours	0
Survey 558	GWB	12:00 AM	1	07024	Home	City Bus	#N/A	#N/A	General Recreation	1 - 2 hours	0
Survey 1	Cooper River Bridge, South	8:22 AM	1	29407	Home	Auto/Motorcycle	1 Garage/Lot Nearby		running	1 - 2 hours	0
Survey 2	Cooper River Bridge, South	8:44 AM	1	00000	Home	Walk/Bike	#N/A	#N/A	Biking	#N/A	0
Survey 3	Cooper River Bridge, South	9:57 AM	1	00000	Home	Auto/Motorcycle	1 Garage/Lot Nearby		General Recreation	less than 1 hour	0
Survey 4	Cooper River Bridge, South	10:05 AM	1	29403	Home	Auto/Motorcycle	1 Garage/Lot Nearby		General Recreation	1 - 2 hours	0
Survey 5	Cooper River Bridge, South	10:45 AM	0	29401	Home	Walk/Bike	#N/A	#N/A	General Recreation	2 - 3 hours	0
Survey 6	Cooper River Bridge, South	11:05 AM	1	29412	Home	Auto/Motorcycle	4 On-Street Nearby		General Recreation	1 - 2 hours	0
Survey 7	Cooper River Bridge, South	12:26 PM	1	29403	Home	Auto/Motorcycle	2 Garage/Lot Nearby		General Recreation	1 - 2 hours	0
Survey 8	Cooper River Bridge, South	1:30 AM	1	29466	Home	Auto/Motorcycle	1 Garage/Lot Nearby		Brunch	3 - 4 hours	0
Survey 1	Woodrow Wilson Bridge	12:00 AM	1	20748	Home	Auto/Motorcycle	2 Garage/Lot Remotely		General Recreation	1 - 2 hours	Tanger Outlet
Survey 2	Woodrow Wilson Bridge	12:00 AM	1	22306	Home	Auto/Motorcycle	3 Garage/Lot Nearby		General Recreation	1 - 2 hours	Hampton Inn Parking Lot
Survey 3	Woodrow Wilson Bridge	12:00 AM	1	20745	Home	Auto/Motorcycle	3 Garage/Lot Nearby		General Recreation	less than 1 hour	GS4 building near tanger
Survey 4	Woodrow Wilson Bridge	12:00 AM	1	20785	Home	Auto/Motorcycle	2 Garage/Lot Nearby		General Recreation	1 - 2 hours	park police lot
Survey 5	Woodrow Wilson Bridge	12:00 AM	1	20735	Home	Auto/Motorcycle	1 Garage/Lot Nearby		General Recreation	2 - 3 hours	GHO commuter lot
Survey 6	Woodrow Wilson Bridge	12:00 AM	1	20623	Home	Auto/Motorcycle	2 Garage/Lot Nearby		General Recreation	1 - 2 hours	Tanger park + ride
Survey 7	Woodrow Wilson Bridge	12:00 AM	0	22314	Home	Walk/Bike	#N/A	#N/A	General Recreation	less than 1 hour	0
Survey 8	Woodrow Wilson Bridge	12:00 AM	1	20747	Home	Auto/Motorcycle	1 Garage/Lot Nearby		General Recreation	less than 1 hour	gravel lot
Survey 9	Woodrow Wilson Bridge	12:00 AM	0	20745	Home	Walk/Bike	#N/A	#N/A	General Recreation	1 - 2 hours	0
Survey 10	Woodrow Wilson Bridge	12:00 AM	1	20785	Home	Auto/Motorcycle	1 Garage/Lot Nearby		General Recreation	1 - 2 hours	gravel lot
Survey 11	Woodrow Wilson Bridge	12:00 AM	1	20747	Home	Auto/Motorcycle	1 Garage/Lot Nearby		General Recreation	1 - 2 hours	gravel lot
Survey 12	Woodrow Wilson Bridge	12:00 AM	1	20019	Home	Auto/Motorcycle	1 Garage/Lot Nearby		General Recreation	1 - 2 hours	gravel lot
Survey 13	Woodrow Wilson Bridge	12:00 AM	1	20748	Home	Auto/Motorcycle	2 Garage/Lot Nearby		General Recreation	less than 1 hour	police station lot
Survey 14	Woodrow Wilson Bridge	12:00 AM	0	20744	Home	Walk/Bike	#N/A	#N/A	Bike Riding	less than 1 hour	0
Survey 15	Woodrow Wilson Bridge	12:00 AM	1	20745	Home	Auto/Motorcycle	2 On-Street Nearby		General Recreation	1 - 2 hours	Greene
Survey 16	Woodrow Wilson Bridge	12:00 AM	1	20746	Home	Auto/Motorcycle	1 Garage/Lot Nearby		General Recreation	less than 1 hour	police lot
Survey 17	Woodrow Wilson Bridge	12:00 AM	0	22314	Home	Walk/Bike	#N/A	#N/A	Bike Riding	less than 1 hour	0
Survey 18	Woodrow Wilson Bridge	12:00 AM	1	20744	Home	Auto/Motorcycle	1 Garage/Lot Nearby		General Recreation	1 - 2 hours	0
Survey 19	Woodrow Wilson Bridge	12:00 AM	1	20745	Home	Auto/Motorcycle	3 On-Street Nearby		General Recreation	1 - 2 hours	0
Survey 20	Woodrow Wilson Bridge	12:00 AM	1	20735	Home	Auto/Motorcycle	1 On-Street Nearby		General Recreation	1 - 2 hours	0
Survey 21	Woodrow Wilson Bridge	12:00 AM	1	ir Force Bas	Work	Auto/Motorcycle	2 Garage/Lot Remotely		General Recreation	less than 1 hour	Tanger
Survey 22	Woodrow Wilson Bridge	12:00 AM	1	20002	Home	Auto/Motorcycle	2 Garage/Lot Nearby		General Recreation	less than 1 hour	gravel
Survey 23	Woodrow Wilson Bridge	12:00 AM	1	20706	Home	Auto/Motorcycle	1 Garage/Lot Nearby		General Recreation	3 - 4 hours	0
Survey 24	Woodrow Wilson Bridge	12:00 AM	1	20607	Home	Auto/Motorcycle	3 Garage/Lot Nearby		General Recreation	1 - 2 hours	0
Survey 25	Woodrow Wilson Bridge	9:25 AM	0	22314	Home	Walk/Bike	#N/A	#N/A	General Recreation	less than 1 hour	0
Survey 26	Woodrow Wilson Bridge	9:25 AM	0	22314	Home	Walk/Bike	#N/A	#N/A	General Recreation	less than 1 hour	0
Survey 27	Woodrow Wilson Bridge	9:30 AM	0	27306	Home	Walk/Bike	#N/A	#N/A	Bike Riding	less than 1 hour	0
Survey 28	Woodrow Wilson Bridge	9:32 AM	0	22314	Home	Walk/Bike	#N/A	#N/A	General Recreation	2 - 3 hours	0
Survey 29	Woodrow Wilson Bridge	9:18 AM	1	20748	Home	Auto/Motorcycle	1 Garage/Lot Nearby		General Recreation	1 - 2 hours	0
Survey 30	Woodrow Wilson Bridge	9:33 AM	1	20744	Home	Auto/Motorcycle	1 Garage/Lot Nearby		General Recreation	1 - 2 hours	0
Survey 31	Woodrow Wilson Bridge	9:35 AM	0	22314	Home	Walk/Bike	#N/A	#N/A	General Recreation	2 - 3 hours	0

Survey 32	Woodrow Wilson Bridge	9:39 AM	1	20746	Home	Auto/Motorcycle	1 Garage/Lot Remotely	General Recreation	1 - 2 hours	0
Survey 33	Woodrow Wilson Bridge	9:35 AM	1	20748	Home	Auto/Motorcycle	1 Garage/Lot Remotely	General Recreation	1 - 2 hours	park and ride
Survey 34	Woodrow Wilson Bridge	9:39 AM	1	22303	Home	Auto/Motorcycle	1 Garage/Lot Remotely	Bike Riding	1 - 2 hours	Bell Haven
Survey 35	Woodrow Wilson Bridge	9:42 AM	0	22307	Home	Walk/Bike	#N/A	Bike Riding	less than 1 hour	0
Survey 36	Woodrow Wilson Bridge	9:45 AM	0	22306	Home	Walk/Bike	#N/A	General Recreation	less than 1 hour	0
Survey 37	Woodrow Wilson Bridge	9:47 AM	0	22314	Home	Walk/Bike	#N/A	General Recreation	1 - 2 hours	0
Survey 38	Woodrow Wilson Bridge	9:48 AM	1	20742	Home	Auto/Motorcycle	2 On-Street Nearby	General Recreation	1 - 2 hours	0
Survey 39	Woodrow Wilson Bridge	9:52 AM	0	22314	Home	Walk/Bike	#N/A	General Recreation	less than 1 hour	0
Survey 40	Woodrow Wilson Bridge	9:56 AM	1	out of town	#N/A	Auto/Motorcycle	4 Garage/Lot Remotely	General Recreation	1 - 2 hours	0
Survey 41	Woodrow Wilson Bridge	9:46 AM	1	22315	Home	Auto/Motorcycle	1 Garage/Lot Remotely	General Recreation	1 - 2 hours	0
Survey 42	Woodrow Wilson Bridge	9:51 AM	1	20020	Home	Auto/Motorcycle	3 On-Street Nearby	General Recreation	1 - 2 hours	cw
Survey 43	Woodrow Wilson Bridge	9:53 AM	0	22204	Home	Walk/Bike	#N/A	Bike Riding	1 - 2 hours	0
Survey 44	Woodrow Wilson Bridge	9:57 AM	0	22314	Home	Walk/Bike	#N/A	General Recreation	less than 1 hour	0
Survey 45	Woodrow Wilson Bridge	10:00 AM	1	20745	Home	Auto/Motorcycle	1 Garage/Lot Nearby	General Recreation	#N/A	gravel lot
Survey 46	Woodrow Wilson Bridge	10:05 AM	0	22044	Home	Walk/Bike	#N/A	Bike Riding	less than 1 hour	0
Survey 47	Woodrow Wilson Bridge	10:06 AM	1	20744	Home	Auto/Motorcycle	1 Garage/Lot Remotely	General Recreation	1 - 2 hours	substation lot
Survey 48	Woodrow Wilson Bridge	10:09 AM	1	20002	Home	Auto/Motorcycle	1 Garage/Lot Nearby	General Recreation	1 - 2 hours	National
Survey 49	Woodrow Wilson Bridge	9:59 AM	1	20744	Home	Auto/Motorcycle	1 Garage/Lot Nearby	General Recreation	1 - 2 hours	0
Survey 50	Woodrow Wilson Bridge	10:07 AM	1	20745	Home	Auto/Motorcycle	1 Garage/Lot Remotely	General Recreation	1 - 2 hours	0
Survey 51	Woodrow Wilson Bridge	10:09 AM	1	22309	#N/A	Auto/Motorcycle	1 Garage/Lot Remotely	General Recreation	less than 1 hour	0
Survey 52	Woodrow Wilson Bridge	10:16 AM	1	20020	Home	Auto/Motorcycle	3 Garage/Lot Remotely	General Recreation	1 - 2 hours	0
Survey 53	Woodrow Wilson Bridge	10:16 AM	1	20735	Home	Auto/Motorcycle	2 Garage/Lot Nearby	General Recreation	1 - 2 hours	police
Survey 54	Woodrow Wilson Bridge	10:19 AM	1	20032	Home	Auto/Motorcycle	1 Garage/Lot Nearby	General Recreation	1 - 2 hours	police
Survey 55	Woodrow Wilson Bridge	10:21 AM	1	00000	#N/A	Auto/Motorcycle	1 Garage/Lot Nearby	General Recreation	1 - 2 hours	top of hill
Survey 56	Woodrow Wilson Bridge	10:26 AM	1	20720	Home	Auto/Motorcycle	2 Garage/Lot Nearby	General Recreation	1 - 2 hours	cw
Survey 57	Woodrow Wilson Bridge	10:39 AM	0	22303	Home	Walk/Bike	#N/A	General Recreation	4 or more hours	0
Survey 58	Woodrow Wilson Bridge	10:49 AM	1	20749	Home	Auto/Motorcycle	1 Garage/Lot Nearby	General Recreation	1 - 2 hours	gravel lot
Survey 59	Woodrow Wilson Bridge	10:50 AM	1	20744	Home	Auto/Motorcycle	1 Garage/Lot Nearby	General Recreation	1 - 2 hours	police station
Survey 60	Woodrow Wilson Bridge	10:52 AM	1	20748	#N/A	Auto/Motorcycle	1 Garage/Lot Nearby	General Recreation	1 - 2 hours	police station
Survey 61	Woodrow Wilson Bridge	10:34 AM	1	22308	Home	Auto/Motorcycle	1 Garage/Lot Nearby	General Recreation	#N/A	0
Survey 62	Woodrow Wilson Bridge	10:43 AM	1	20746	Home	Auto/Motorcycle	1 Garage/Lot Nearby	General Recreation	1 - 2 hours	cw
Survey 63	Woodrow Wilson Bridge	10:53 AM	0	22204	Home	Walk/Bike	#N/A	Bike Riding	less than 1 hour	0
Survey 64	Woodrow Wilson Bridge	10:54 AM	0	20744	Home	Walk/Bike	#N/A	General Recreation	1 - 2 hours	0
Survey 65	Woodrow Wilson Bridge	10:53 AM	1	20744	Home	Auto/Motorcycle	1 Garage/Lot Nearby	General Recreation	less than 1 hour	0
Survey 66	Woodrow Wilson Bridge	10:58 AM	1	22310	Home	Auto/Motorcycle	2 Garage/Lot Nearby	General Recreation	1 - 2 hours	0
Survey 67	Woodrow Wilson Bridge	11:04 AM	1	20748	Home	Taxi/Service Car	2 Garage/Lot Nearby	General Recreation	1 - 2 hours	gravel lot
Survey 68	Woodrow Wilson Bridge	11:06 AM	1	22202	Home	Auto/Motorcycle	1 On-Street Nearby	General Recreation	1 - 2 hours	0
Survey 69	Woodrow Wilson Bridge	11:02 AM	1	20721	Home	Auto/Motorcycle	1 Garage/Lot Remotely	General Recreation	1 - 2 hours	0
Survey 70	Woodrow Wilson Bridge	11:05 AM	1	20721	Home	Auto/Motorcycle	1 Garage/Lot Remotely	Bike Riding	1 - 2 hours	0
Survey 71	Woodrow Wilson Bridge	11:06 AM	1	20721	Home	Auto/Motorcycle	2 Garage/Lot Nearby	General Recreation	1 - 2 hours	0
Survey 72	Woodrow Wilson Bridge	11:09 AM	1	22307	Home	Auto/Motorcycle	1 Garage/Lot Nearby	General Recreation	#N/A	0
Survey 73	Woodrow Wilson Bridge	11:09 AM	1	20020	Home	Auto/Motorcycle	1 Garage/Lot Nearby	General Recreation	less than 1 hour	0
Survey 74	Woodrow Wilson Bridge	11:15 AM	1	20704	Home	Auto/Motorcycle	2 On-Street Nearby	General Recreation	1 - 2 hours	0
Survey 75	Woodrow Wilson Bridge	11:22 AM	1	22303	Home	Auto/Motorcycle	1 On-Street Nearby	General Recreation	less than 1 hour	0
Survey 76	Woodrow Wilson Bridge	11:25 AM	1	20706	Home	Auto/Motorcycle	1 Garage/Lot Remotely	General Recreation	less than 1 hour	0
Survey 77	Woodrow Wilson Bridge	11:31 AM	0	49548	Home	Walk/Bike	#N/A	General Recreation	less than 1 hour	0
Survey 78	Woodrow Wilson Bridge	11:33 AM	1	20746	Home	Auto/Motorcycle	2 On-Street Nearby	General Recreation	1 - 2 hours	0
Survey 79	Woodrow Wilson Bridge	11:34 AM	1	20745	Other	Auto/Motorcycle	1 Garage/Lot Nearby	General Recreation	2 - 3 hours	gravel
Survey 80	Woodrow Wilson Bridge	11:46 AM	1	22304	Home	Auto/Motorcycle	2 Garage/Lot Nearby	General Recreation	less than 1 hour	0
Survey 81	Woodrow Wilson Bridge	11:49 AM	1	20639	Home	Auto/Motorcycle	2 Garage/Lot Nearby	General Recreation	less than 1 hour	gravel

Survey 82	Woodrow Wilson Bridge	11:51 AM	1	20032	Home	Auto/Motorcycle		1 Garage/Lot Nearby	General Recreation	less than 1 hour	0
Survey 83	Woodrow Wilson Bridge	11:52 AM	1	22079	Home	Auto/Motorcycle		1 On-Street Nearby	General Recreation	1 - 2 hours	0
Survey 84	Woodrow Wilson Bridge	11:55 AM	0	20008	Home	Walk/Bike	#N/A	#N/A	General Recreation	less than 1 hour	0
Survey 85	Woodrow Wilson Bridge	11:25 AM	0	22314	Home	Walk/Bike	#N/A	#N/A	General Recreation	1 - 2 hours	0
Survey 86	Woodrow Wilson Bridge	11:33 AM	1	20745	Home	Auto/Motorcycle		2 Garage/Lot Nearby	General Recreation	1 - 2 hours	0
Survey 87	Woodrow Wilson Bridge	11:40 AM	0	22206	Home	Walk/Bike	#N/A	#N/A	Bike Riding	1 - 2 hours	0
Survey 88	Woodrow Wilson Bridge	11:42 AM	1	DC	Home	Auto/Motorcycle		1 Garage/Lot Remotely	General Recreation	less than 1 hour	parked on the base
Survey 89	Woodrow Wilson Bridge	11:10 AM	0	22079	Home	Walk/Bike	#N/A	#N/A	Bike Riding	less than 1 hour	0
Survey 90	Woodrow Wilson Bridge	11:16 AM	1	20748	Home	Auto/Motorcycle		2 Garage/Lot Nearby	General Recreation	1 - 2 hours	0
Survey 91	Woodrow Wilson Bridge	11:18 AM	0	Key Bridge	Other Attra	Walk/Bike	#N/A	#N/A	Bike Riding	less than 1 hour	0
Survey 92	Woodrow Wilson Bridge	11:21 AM	1	20019	Home	Auto/Motorcycle		2 Garage/Lot Remotely	General Recreation	1 - 2 hours	0
Survey 93	Woodrow Wilson Bridge	11:59 AM	1	20747	Home	Auto/Motorcycle		2 Garage/Lot Nearby	General Recreation	less than 1 hour	0
Survey 94	Woodrow Wilson Bridge	12:06 PM	1	20744	Home	Auto/Motorcycle		1 Garage/Lot Nearby	General Recreation	1 - 2 hours	0
Survey 95	Woodrow Wilson Bridge	12:11 PM	1	22306	Home	Auto/Motorcycle		1 Garage/Lot Nearby	General Recreation	less than 1 hour	0
Survey 96	Woodrow Wilson Bridge	12:16 PM	1	22307	Home	Auto/Motorcycle		1 Garage/Lot Nearby	General Recreation	1 - 2 hours	0
Survey 97	Woodrow Wilson Bridge	12:02 PM	1	Old Town	Home	Auto/Motorcycle		2 Garage/Lot Nearby	General Recreation	1 - 2 hours	0
Survey 98	Woodrow Wilson Bridge	12:22 PM	1	20735	Home	Auto/Motorcycle		1 Garage/Lot Nearby	General Recreation	1 - 2 hours	Volunteer
Survey 99	Woodrow Wilson Bridge	12:23 PM	1	22307	Home	Auto/Motorcycle		3 On-Street Nearby	General Recreation	1 - 2 hours	0
Survey 100	Woodrow Wilson Bridge	12:30 PM	1	20170	Home	Auto/Motorcycle		5 Garage/Lot Remotely	General Recreation	1 - 2 hours	cw
Survey 101	Woodrow Wilson Bridge	12:20 PM	1	20607	Home	Auto/Motorcycle		2 Garage/Lot Nearby	General Recreation	less than 1 hour	gravel lot
Survey 102	Woodrow Wilson Bridge	12:21 PM	0	22314	Home	Walk/Bike	#N/A	#N/A	General Recreation	less than 1 hour	0
Survey 103	Woodrow Wilson Bridge	12:31 PM	1	20743	Home	Auto/Motorcycle		2 Garage/Lot Nearby	General Recreation	less than 1 hour	0
Survey 104	Woodrow Wilson Bridge	12:44 PM	0	22201	Other Attra	Rollerblade	#N/A	#N/A	General Recreation	less than 1 hour	0
Survey 105	Woodrow Wilson Bridge	12:39 PM	1	20745	Home	Auto/Motorcycle		3 Garage/Lot Nearby	General Recreation	1 - 2 hours	0
Survey 106	Woodrow Wilson Bridge	12:45 PM	0	20774	Home	Walk/Bike	#N/A	#N/A	General Recreation	1 - 2 hours	0
Survey 107	Woodrow Wilson Bridge	12:52 PM	1	21207	Home	Auto/Motorcycle		1 Dropped-off	General Recreation	1 - 2 hours	0
Survey 108	Woodrow Wilson Bridge	12:56 PM	1	22003	Home	Auto/Motorcycle		2 Garage/Lot Remotely	General Recreation	1 - 2 hours	0
Survey 109	Woodrow Wilson Bridge	12:53 PM	1	20901	Home	Auto/Motorcycle		2 Garage/Lot Remotely	Bike Riding	#N/A	0
Survey 110	Woodrow Wilson Bridge	12:58 PM	1	22307	Home	Auto/Motorcycle		3 Garage/Lot Nearby	General Recreation	1 - 2 hours	0
Survey 111	Woodrow Wilson Bridge	1:04 PM	0	22314	Home	Walk/Bike	#N/A	#N/A	#N/A	less than 1 hour	0
Survey 112	Woodrow Wilson Bridge	1:07 PM	1	20018	Home	Auto/Motorcycle		3 Garage/Lot Nearby	Bike Riding	less than 1 hour	0
Survey 113	Woodrow Wilson Bridge	1:05 PM	1	20744	Home	Auto/Motorcycle		1 Garage/Lot Remotely	Bike Riding	1 - 2 hours	0
Survey 114	Woodrow Wilson Bridge	1:08 PM	1	22306	Home	Auto/Motorcycle		2 Garage/Lot Nearby	General Recreation	less than 1 hour	0
Survey 115	Woodrow Wilson Bridge	1:12 PM	1	20722	Home	Auto/Motorcycle		1 Garage/Lot Nearby	General Recreation	1 - 2 hours	0
Survey 116	Woodrow Wilson Bridge	1:02 PM	1	02746	Home	Auto/Motorcycle		1 Garage/Lot Nearby	General Recreation	1 - 2 hours	0
Survey 117	Woodrow Wilson Bridge	1:11 PM	1	22309	Home	Auto/Motorcycle		3 On-Street Nearby	General Recreation	1 - 2 hours	0
Survey 118	Woodrow Wilson Bridge	1:14 PM	1	22309	Home	Auto/Motorcycle		2 Garage/Lot Nearby	General Recreation	less than 1 hour	0
Survey 119	Woodrow Wilson Bridge	1:16 PM	1	22046	Home	Auto/Motorcycle		4 Garage/Lot Nearby	Bike Riding	less than 1 hour	0
Survey 120	Woodrow Wilson Bridge	1:20 PM	1	20745	Home	Auto/Motorcycle		1 Garage/Lot Nearby	General Recreation	less than 1 hour	0
Survey 121	Woodrow Wilson Bridge	11:49 AM	1	22310	Home	Auto/Motorcycle		1 Garage/Lot Nearby	General Recreation	less than 1 hour	0
Survey 122	Woodrow Wilson Bridge	11:55 AM	0	20008	Home	Walk/Bike	#N/A	#N/A	Bike Riding	less than 1 hour	0
Survey 123	Woodrow Wilson Bridge	11:58 AM	1	20744	Home	Auto/Motorcycle		1 Garage/Lot Remotely	General Recreation	2 - 3 hours	0
Survey 124	Woodrow Wilson Bridge	12:02 PM	0	22314	Home	Walk/Bike	#N/A	#N/A		0 1 - 2 hours	0
Survey 125	Woodrow Wilson Bridge	1:16 PM	0	22314	Home	Walk/Bike	#N/A	#N/A	Bike Riding	less than 1 hour	0
Survey 126	Woodrow Wilson Bridge	1:25 PM	1	20744	Home	Auto/Motorcycle		1 Garage/Lot Remotely	General Recreation	1 - 2 hours	0
Survey 127	Woodrow Wilson Bridge	1:28 PM	1	22306	Home	Auto/Motorcycle		1 Garage/Lot Remotely	Bike Riding	1 - 2 hours	0
Survey 128	Woodrow Wilson Bridge	1:31 PM	0	20008	#N/A	Walk/Bike	#N/A	#N/A	Bike Riding	less than 1 hour	0
Survey 129	Woodrow Wilson Bridge	12:00 AM	0	20001	Home	Walk/Bike	#N/A	#N/A	Bike Riding	less than 1 hour	0
Survey 130	Woodrow Wilson Bridge	12:00 AM	1	20716	Home	Auto/Motorcycle		2 Garage/Lot Remotely	Bike Riding	1 - 2 hours	0
Survey 131	Woodrow Wilson Bridge	12:00 AM	0	22307	Home	Walk/Bike	#N/A	#N/A	General Recreation	2 - 3 hours	0

Survey 132	Woodrow Wilson Bridge	2:09 PM	0	22304	Home	Walk/Bike	#N/A	#N/A	Bike Riding	less than 1 hour	0
Survey 133	Woodrow Wilson Bridge	2:13 PM	1	Maryland	Home	Auto/Motorcycle	5	Garage/Lot Nearby	General Recreation	1 - 2 hours	0