

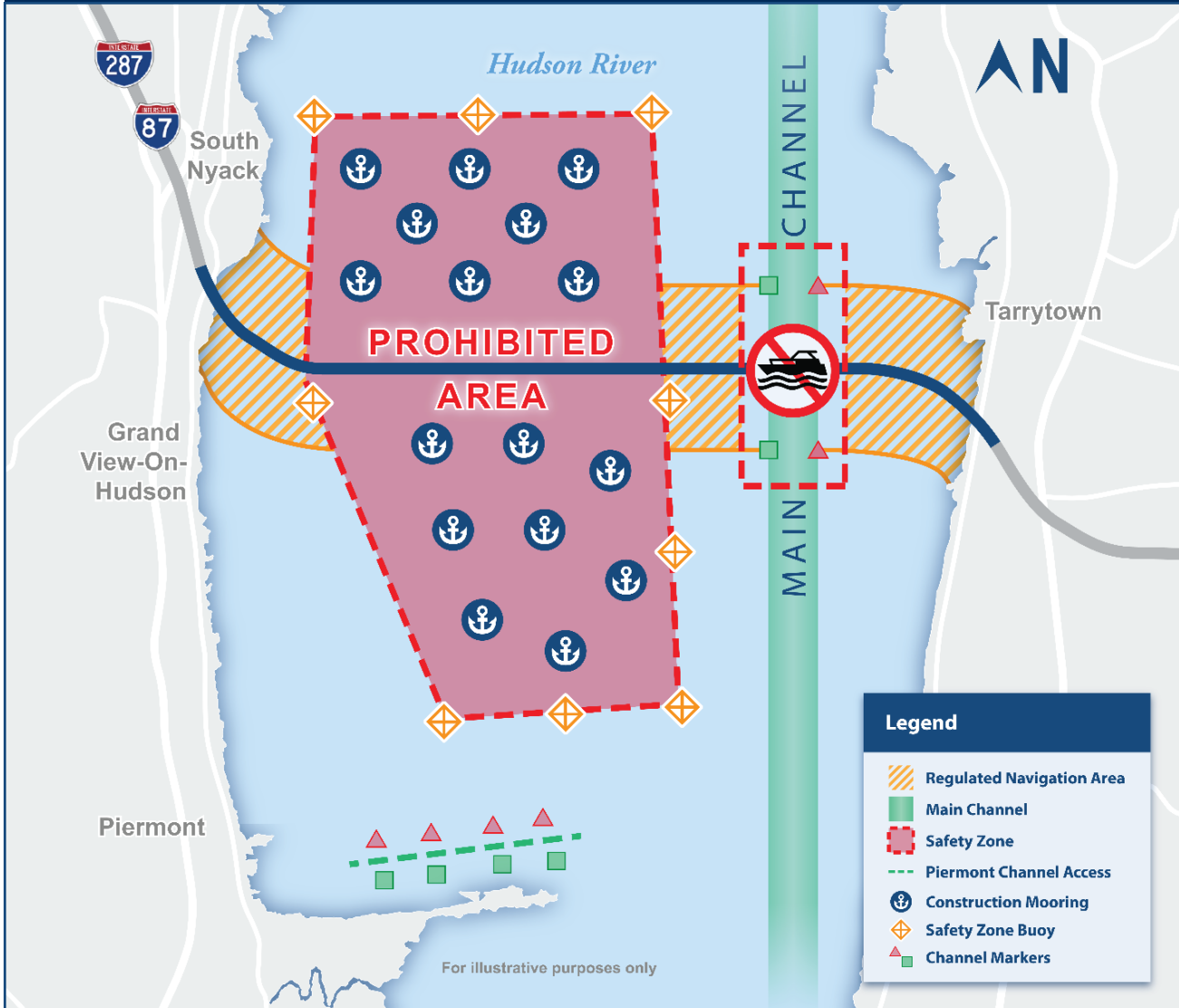
Boater Safety Update



CHANNEL CLOSURE ADVISORY



Expect periodic closures of the main channel. Avoid the project site. Tune to Marine Radio Channel 22A for the latest U.S. Coast Guard advisories or call 914.789.3224. Communicate with Tappan Zee Constructors via **Marine Radio Channel 16**.



- Stay clear of all overhead work.
- Use the center 600 feet of the **Main Channel** (when available) to navigate north or south with no wake at a maximum speed of five knots.
- Keep away from all bridge piers.
- Lighted buoys mark the **Safety Zone** and Construction Mooring locations.
- **Regulated Navigation Areas (RNAs)** stretch 500 yards north and 500 yards south of the existing bridge. Do not stop or loiter.
- Vessels should depart and approach the Tarrytown shoreline (**Eastern RNA**) to and from the north. Mariners should stay clear of the bridge landing near Rockland (**Western RNA**).
- View GPS-tracked construction vessel locations on NewNYBridge.com/Boater.

The New York State Thruway Authority provides this information as a public service. Any reliance you place on such information is therefore strictly at your own risk. Nothing in these guidelines shall supersede the actual construction conditions, and regulations set forth by the U.S. Coast Guard.

