



The Home Stretch: Issues and Areas of Agreement

Agenda



- MTTF Work Program Status
- Outstanding Issues
- Areas of Agreement
- Next Steps



Work Program Status

Work Program Status



- Downtown White Plains Traffic Analysis
 - Complete
- Route 59 Traffic Analysis
 - Complete
- Travel Time Analyses
 - Complete
- Outline
 - Comments received, changes made
- Wrap-up and Final Report



Outstanding Issues

Outstanding Issues



- Tarrytown and White Plains access
- Rockland routing – Route 59 / I-287 / Piermont ROW
- Route 59 “Smart Corridor”
- Westchester destinations – Tarrytown, White Plains, Yonkers, Bronx, Valhalla, Port Chester
- Areas of further evaluation
- Operator
- Financing

Outstanding Issues

- Tarrytown and White Plains access
- Rockland routing – Route 59 / I-287 / Piermont ROW
- Route 59 “Smart Corridor”
- Westchester destinations – Tarrytown, White Plains, Yonkers, Bronx, Valhalla, Port Chester
- Areas of further evaluation
- Operator
- Financing

Response:

Peak-period service to Tarrytown and all-day service to White Plains. All eastbound service to connect to Metro-North trains.

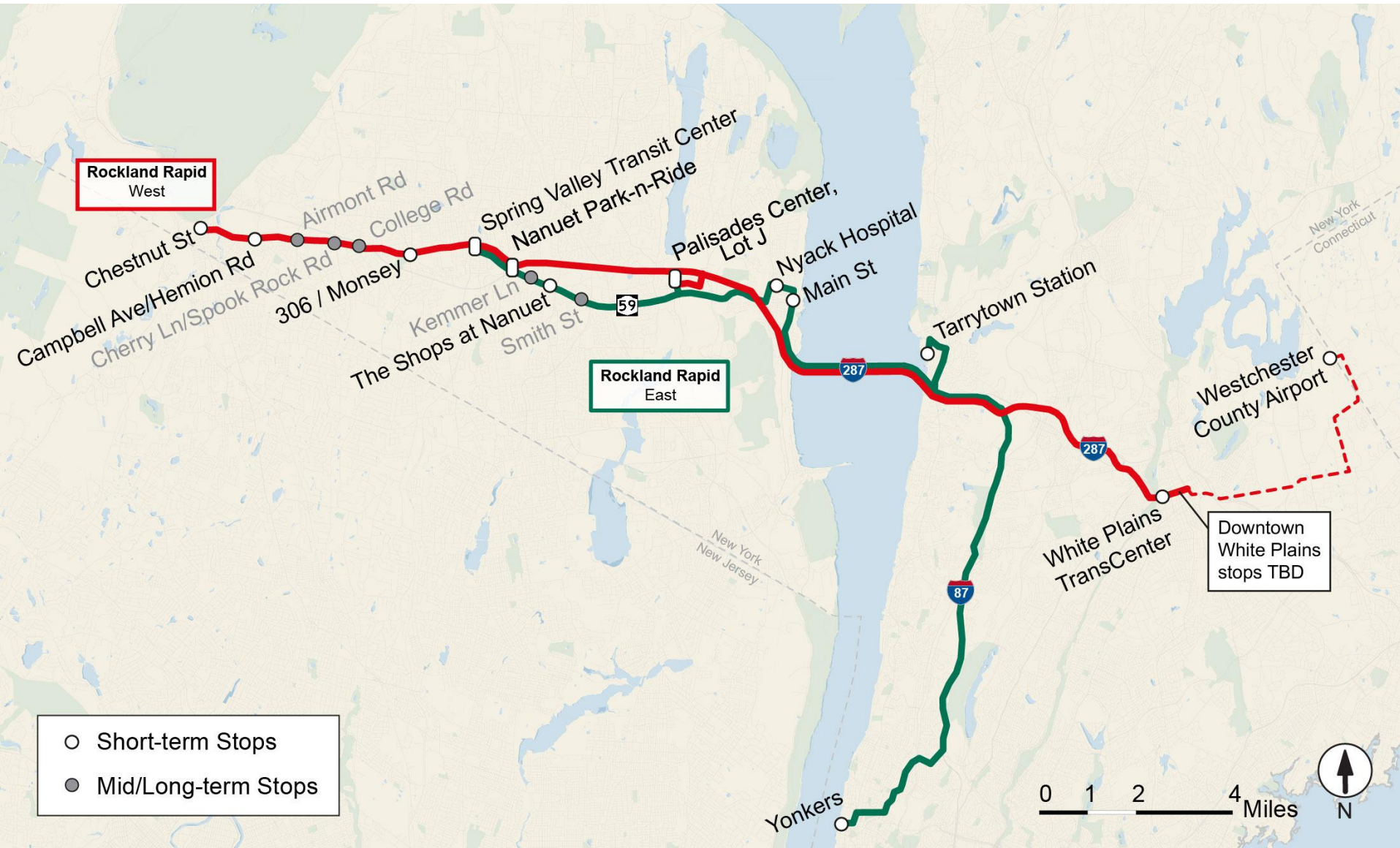
Outstanding Issues

- Tarrytown and White Plains access
- Rockland routing – Route 59 / I-287 / Piermont ROW
- Route 59 “Smart Corridor”
- Westchester destinations – Tarrytown, White Plains, Yonkers, Bronx, Valhalla, Port Chester
- Areas of further evaluation
- Operator
- Financing

Response:

A corridor for regional transit operations needs to be identified. There is insufficient demand to warrant operations along multiple/parallel routes.

Rockland Rapid Routing (Revised)



Piermont ROW Context



Outstanding Issues

- Tarrytown and White Plains access
- Rockland routing – Route 59 / I-287 / Piermont ROW
- Route 59 “Smart Corridor”
 - New signals, timing plans, TSP, improved intersections, queue jump lanes
- Westchester destinations – Tarrytown, White Plains, Yonkers, Bronx, Valhalla, Port Chester
- Areas of further evaluation
- Operator
- Financing

Response:

A “Smart Corridor” concept has been developed to create favorable operations along Route 59 for transit. If the service operates as proposed, the Smart Corridor is needed for speed and reliability.

Route 59 “Smart Corridor”



Outstanding Issues

- Tarrytown and White Plains access
- Rockland routing – Route 59 / I-287 / Piermont ROW
- Route 59 “Smart Corridor”
- Westchester destinations – Tarrytown, White Plains, Yonkers, Bronx, Valhalla, Port Chester
- Areas of further evaluation
- Operator
- Financing

Response:

The revised proposal includes peak-period service to Tarrytown. All-day service to White Plains and Yonkers remains part of the proposal.

Outstanding Issues

- Tarrytown and White Plains access
- Rockland routing – Route 59 /
- Route 59 “Smart Corridor”
- Westchester destinations – Tarrytown, Bronx, Valhalla, Port Chester
- Areas of further evaluation →
- Operator
- Financing

Current List:

- I-287 Corridor Preservation
- Tarrytown Access
- West Shore Line Passenger Rail Service
- Interchange 14X
- Trans-Hudson Ferry
- Transit-Supportive Land Uses
- County TDM Programs

Response:

Is there agreement?

Outstanding Issues

- Tarrytown and White Plains access
- Rockland routing – Route 59 / I-287 / Piermont ROW
- Route 59 “Smart Corridor”
- Westchester destinations – Tarrytown, White Plains, Yonkers, Bronx, Valhalla, Port Chester
- Areas of further evaluation
- Operator
- Financing

Response:

How the proposed transit system would be operated and managed remains unanswered. Is there a recommendation the MTTF would like to put forward?

Outstanding Issues

- Tarrytown and White Plains access
- Rockland routing – Route 59 / I-287 / Piermont ROW
- Route 59 “Smart Corridor”
- Westchester destinations – Tarrytown, White Plains, Yonkers, Bronx, Valhalla, Port Chester
- Areas of further evaluation
- Operator
- Financing

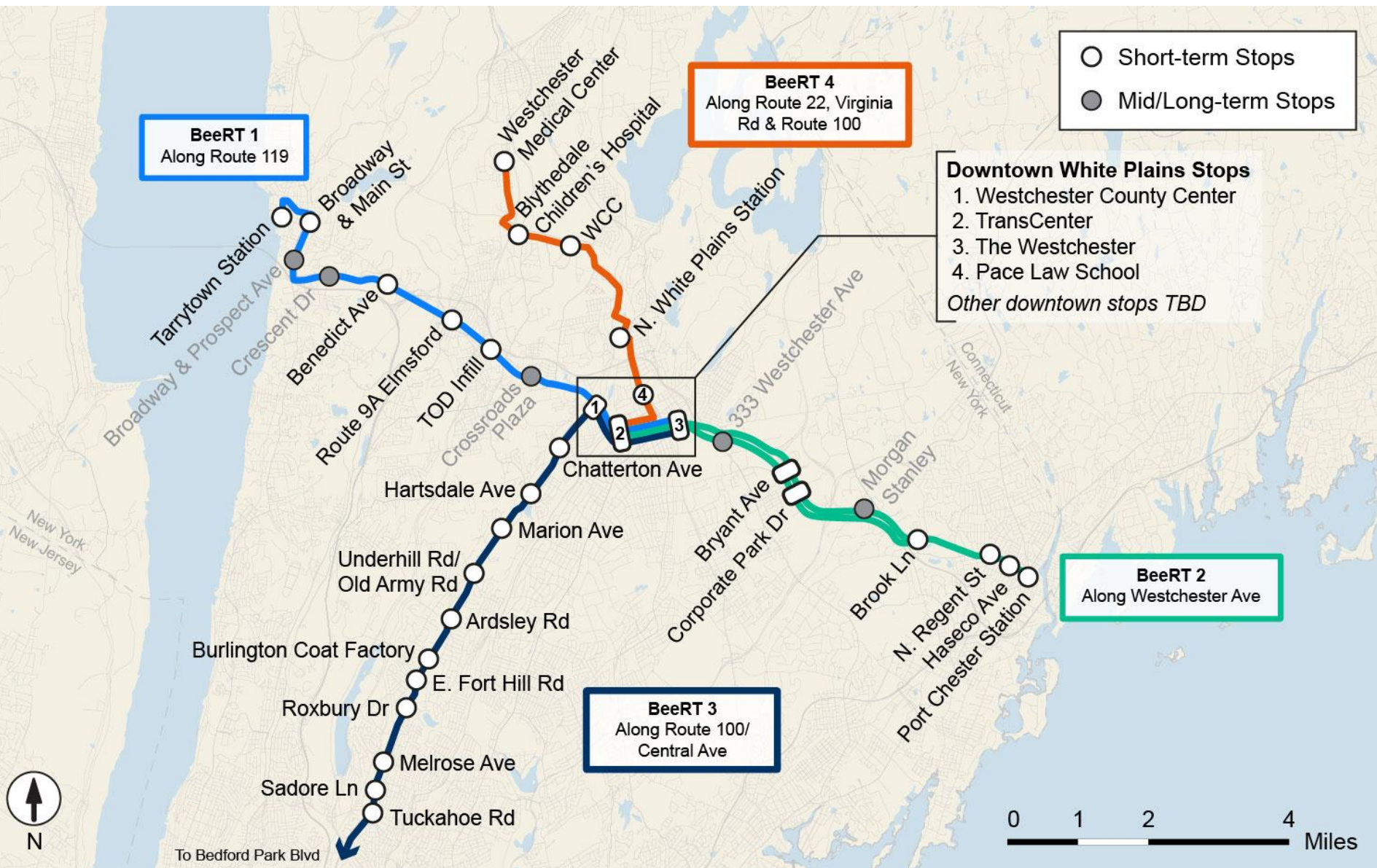
Response:

A menu of options has been developed. Is that sufficient for the final report?
Should the list be narrowed or prioritized?



Areas of Agreement

East-of-Hudson Routing



Service and Infrastructure Enhancements

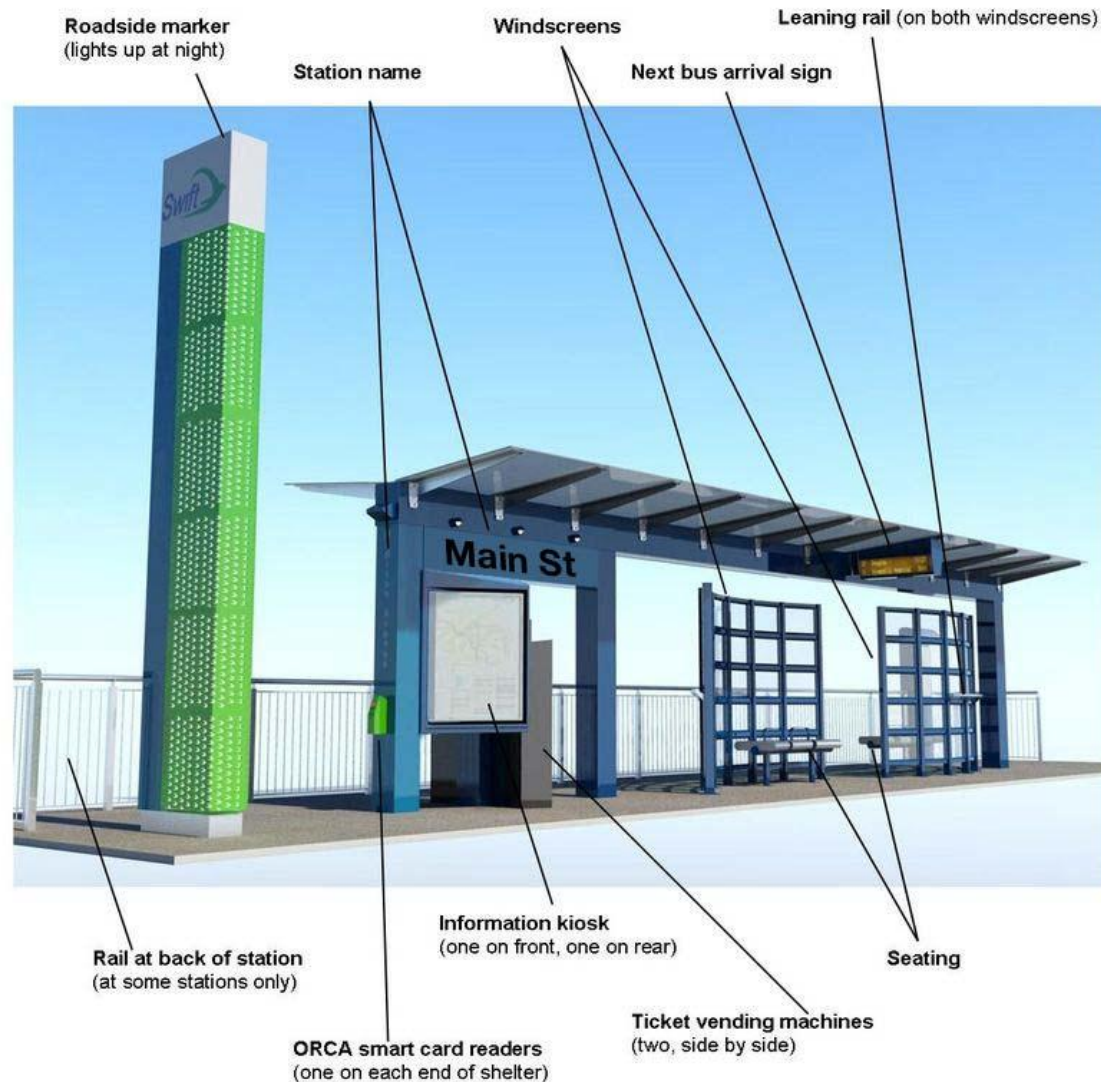


- Service improvements (system-wide)
 - Branding
 - Headway-based frequencies
 - Simple, legible routing
 - New stations (next slide)
- Transit preferential measures (system-wide)
 - Use of emergency lanes on NNYB
 - Transit signal priority
 - Targeted queue jump lanes on local streets

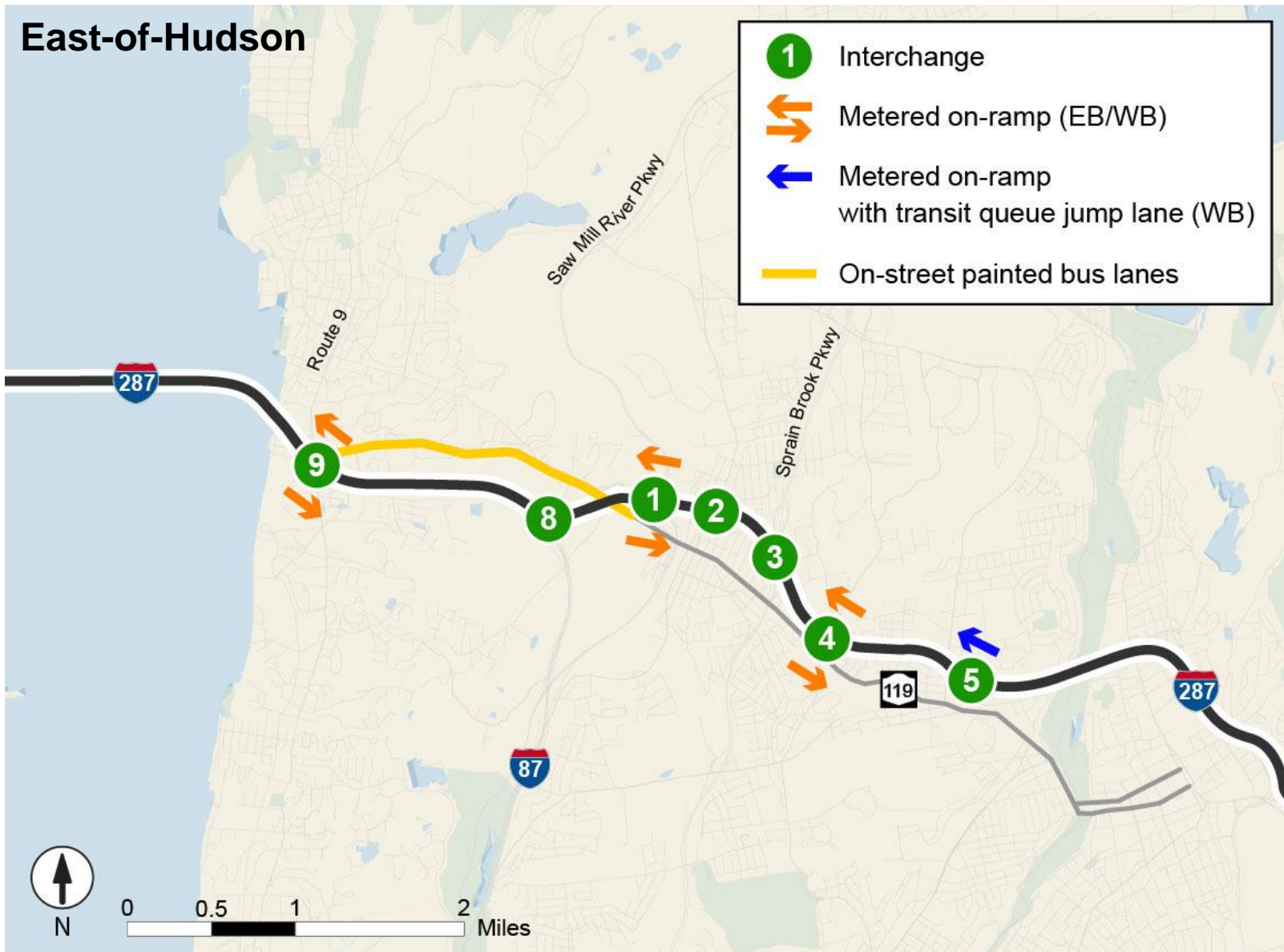
New Stations (System-wide)

General Features

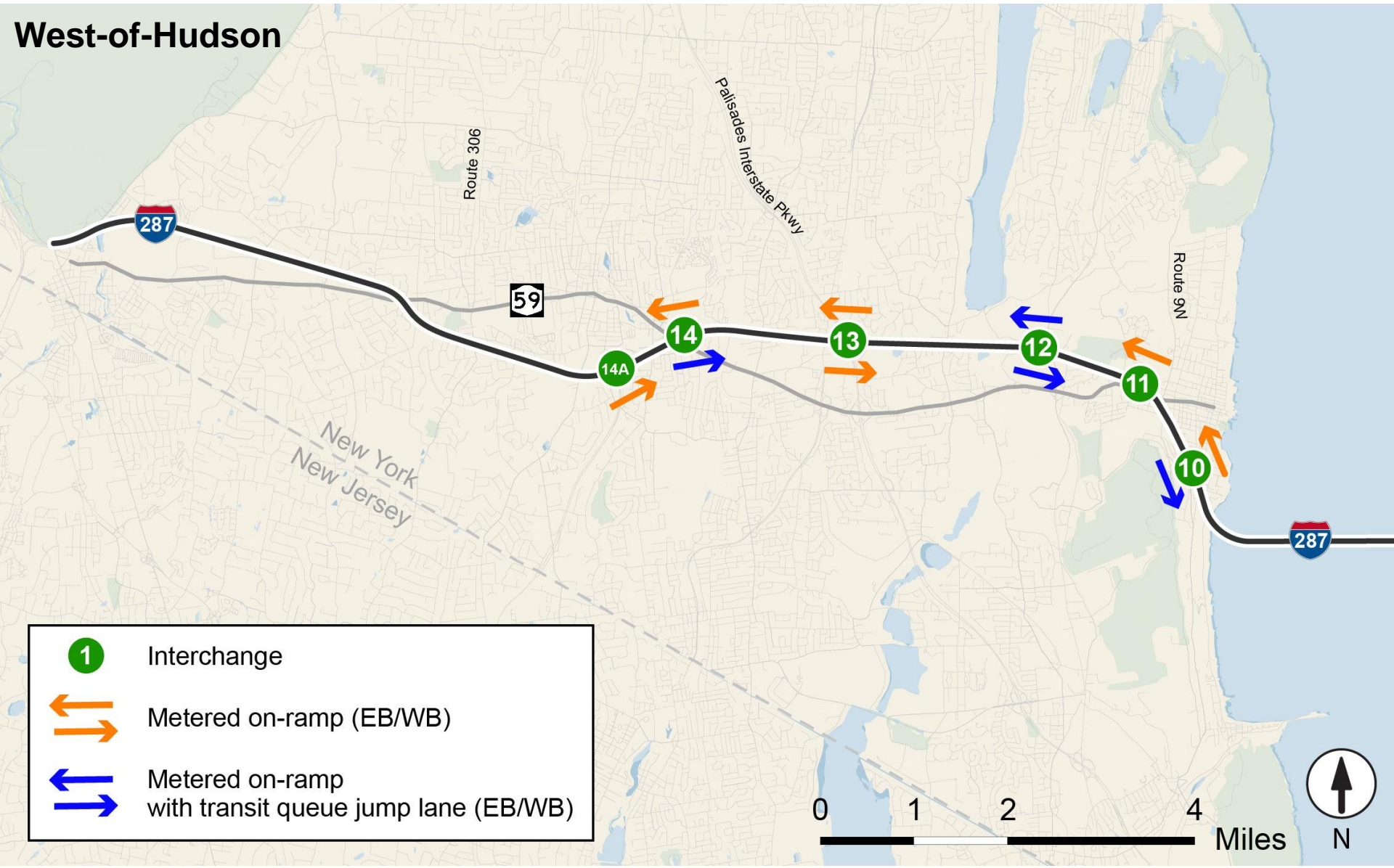
- Branding
- Real-time bus arrival information
- Pre-board fare payment
- Near-level boarding
- Seating
- Lighting
- Bike parking
- Public art



Short-Term Infrastructure



Short-Term Infrastructure



Mid/Long-Term Infrastructure

- Roll-out of additional BRT infrastructure (dedicated lanes, additional queue jump lanes, etc.) as demand requires



White Plains Improvements

- New intermodal transportation hub
- Investments to improve transit/pedestrian/cyclist access to the station
- Transit-oriented development (TOD)



Other West-of-Hudson Items



- In-line station at the Palisades Center (mid-term)
- West-of-Hudson rail improvements
 - Increased PM express service to Ramsey/Route 17 station (short-term)
 - Pascack Valley Line service improvements (short-term)
 - Identify locations for new yard space in Rockland (short-term)
 - Introduction of passenger service to West Shore Line (mid/long-term)
 - Infrastructure improvements on Pascack Valley Line (mid/long-term)
 - MTTF to express support for Gateway Tunnel with Bergen Loop as a mid-term project

Other Regional Items

- Areas for Further Evaluation (short-term)
 - I-287 Corridor Preservation
 - Tarrytown Access
 - West Shore Line Passenger Rail Service
 - Interchange 14X
 - Trans-Hudson Ferry Service
 - Transit-Supportive Land Uses
 - County TDM Plans
- Transit-oriented development
- LRT, CRT not precluded in future (long-term)



Next Steps

Next Steps



- Finalize short-, mid- and long-term recommendations
- Presentation of final proposal to MTTF
- Prepare final report



Discussion