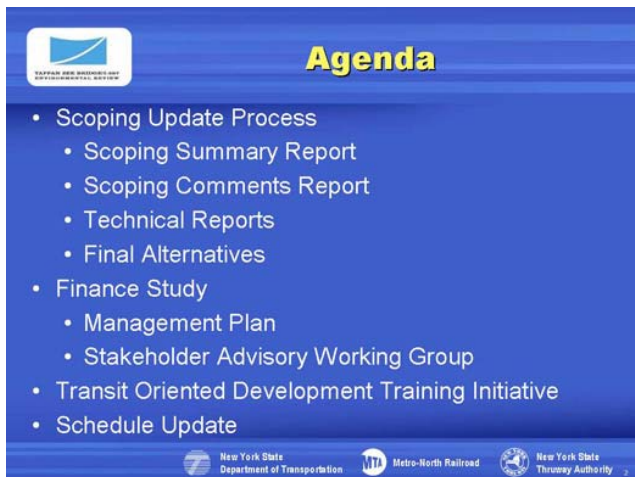
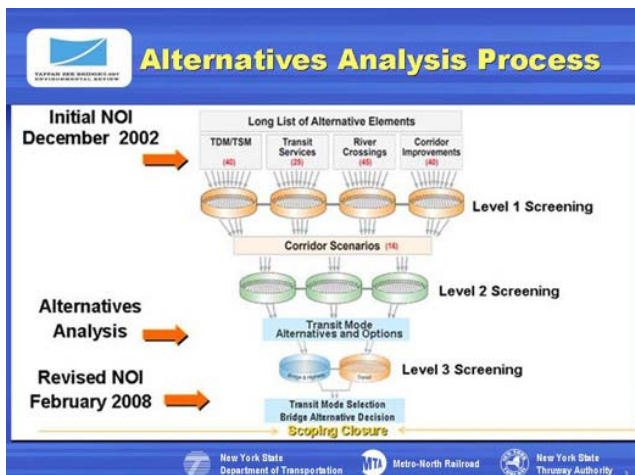


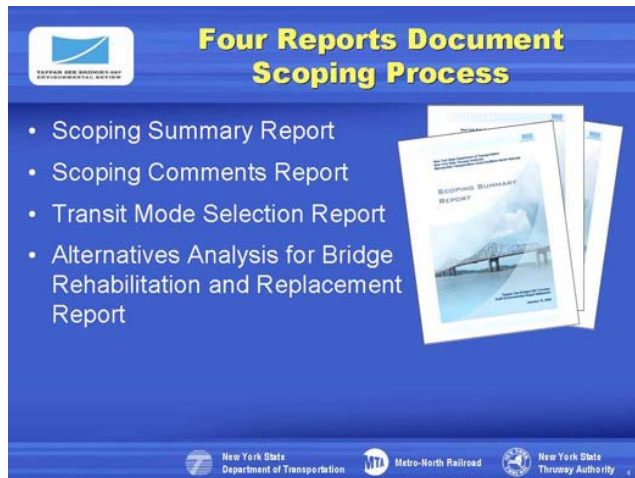
Slide 1.



Slide 2.



Slide 3.

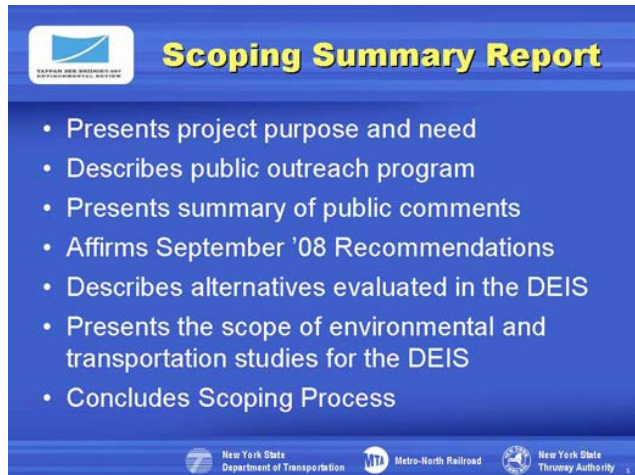


### Four Reports Document Scoping Process

- Scoping Summary Report
- Scoping Comments Report
- Transit Mode Selection Report
- Alternatives Analysis for Bridge Rehabilitation and Replacement Report

New York State Department of Transportation Metro-North Railroad New York State Thruway Authority

Slide 4.

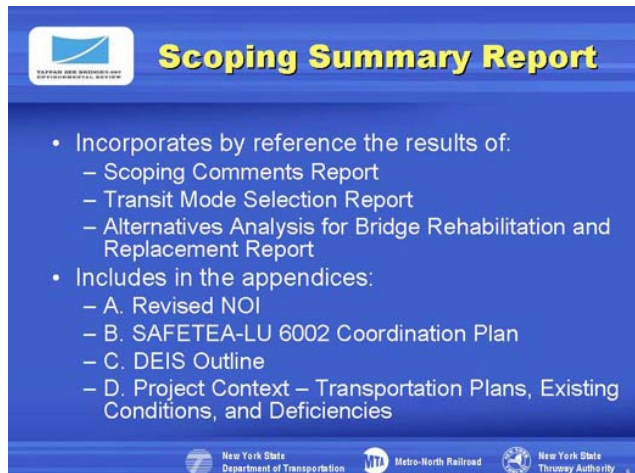


### Scoping Summary Report

- Presents project purpose and need
- Describes public outreach program
- Presents summary of public comments
- Affirms September '08 Recommendations
- Describes alternatives evaluated in the DEIS
- Presents the scope of environmental and transportation studies for the DEIS
- Concludes Scoping Process

New York State Department of Transportation Metro-North Railroad New York State Thruway Authority

Slide 5.




### Scoping Summary Report

- Incorporates by reference the results of:
  - Scoping Comments Report
  - Transit Mode Selection Report
  - Alternatives Analysis for Bridge Rehabilitation and Replacement Report
- Includes in the appendices:
  - A. Revised NOI
  - B. SAFETEA-LU 6002 Coordination Plan
  - C. DEIS Outline
  - D. Project Context – Transportation Plans, Existing Conditions, and Deficiencies

New York State Department of Transportation Metro-North Railroad New York State Thruway Authority

Slide 6.




## Scoping Comments Report

- Provides individual responses to public comments
  - January 2003 Scoping Meetings
  - February 2008 Scoping Update Meetings
  - October 2008 Public Information Meetings
- Summarizes comments by category in a detailed matrix format
- Appendix includes copies of all comments received

New York State Department of Transportation Metro-North Railroad New York State Thruway Authority

Slide 7.



## Comments Overview

- Comments solicited at all three scoping meetings
- In the form of oral statements, comment forms, e-mail, and letters
- Classified in 44 different categories
- Evaluated and addressed in individual responses
- Very few significant comment regarding the scoping document or purpose and need; most pertain to preferences and DEIS issues

New York State Department of Transportation Metro-North Railroad New York State Thruway Authority

Slide 8.




## Comments Statistics

Total Numbers of Comments Received

Source	2003	2008	2008 PIM	TOTAL
Federal Agencies	10	17	0	27
State Agencies	28	34	4	66
Local Municipalities	39	78	27	144
Concerned Groups	200	125	56	381
General Public	180	365	167	712
<b>TOTALS</b>	<b>457</b>	<b>619</b>	<b>254</b>	<b>1,330</b>

New York State Department of Transportation Metro-North Railroad New York State Thruway Authority

Slide 9.



### Comments Statistics

Distribution and Percentages of Comments (all meetings)

Supercategory	Number of Comments	Percentage of Total Comments
Transportation	610	46
Environment	335	25
River Crossing	190	14
Process	195	15

New York State Department of Transportation   MTA Metro-North Railroad   New York State Thruway Authority

Slide 10.



### Transportation Comments

- Need for transit in the corridor recognized by local communities
- Strong support for transit expressed
- Preferences for various modes

New York State Department of Transportation   MTA Metro-North Railroad   New York State Thruway Authority

Slide 11.



### Environmental Comments

- Relationship of land use and transit-oriented development is important
- Concern about sprawl and growth-inducing impacts
- Suggestions made on various environmental studies

New York State Department of Transportation   MTA Metro-North Railroad   New York State Thruway Authority

Slide 12.






## **River Crossing Comments**

- Support for bridge replacement
- Support for bridge rehabilitation
- Support for bridge with supplemental tunnels

New York State Department of Transportation Metro-North Railroad New York State Thruway Authority 13

Slide 13.




## **Process Comments**

- Tiering process questioned
- Concerns about segmentation
- Strong public involvement program encouraged

New York State Department of Transportation Metro-North Railroad New York State Thruway Authority 14

Slide 14.



## **Agency Response to Scoping Comments**

- Smart Growth and land use planning; reflected in goals and objectives
- Technical comments on transit mode and bridge study
- River ecology and impacts refined
- Modified scope to address secondary and cumulative effects analysis beyond the immediate corridor
- Invited additional Participating Agencies
- Revisit a trestle solution for the Hudson Line connection

New York State Department of Transportation Metro-North Railroad New York State Thruway Authority 15

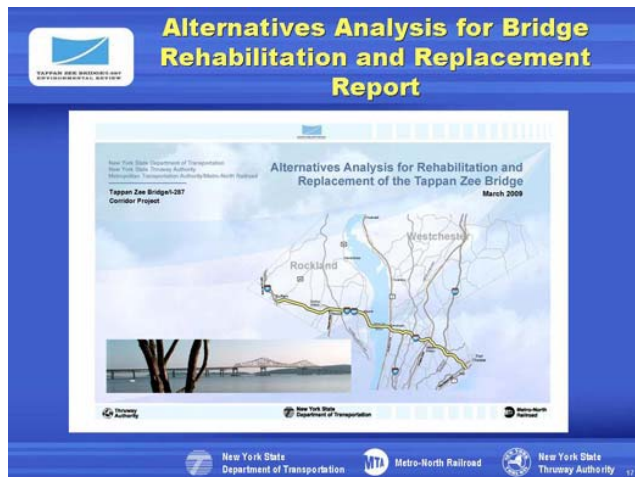
Slide 15.



Slide 16. Presents background of all previous transit modes and combinations considered.

Detailed analysis of said modes and recommendations for DEIS development.

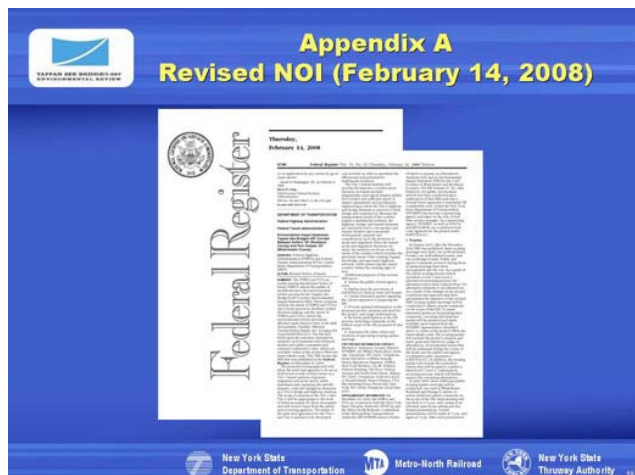
Draft 9/2008  
Final 3/2009



Slide 17. Presents detailed analysis of all rehabilitation and replacement bridge solutions which meet the project purpose and need.

Supports conclusion that all rehabilitation solutions are not reasonable, recommends study and analysis of replacement solutions in the DEIS.

Draft 9/2008  
Final 3/2009



Slide 18.




### Appendix B SAFETEA-LU Section 6002 Coordination Plan

- Outlines the extensive outreach efforts to inform and engage regulatory agencies and the public
- Enhances the level of interaction to ensure the project addresses the needs, interests, and concerns of the public
- Identifies lead, cooperating, and participating agencies and their roles and responsibilities






19

Slide 19.



### Appendix C DEIS Outline

- Developed in coordination with FTA and FHWA
- General outline:
  - Purpose and Need
  - Description of Proposed Action and Alternatives
  - Outreach and Agency Coordination
  - Environmental and Technical Disciplines by Topic
  - Evaluation of Alternatives
  - References, Appendices, and supporting Technical Reports



20

Slide 20.



### Appendix D –Project Context: Transportation Plans, Existing Conditions, and Deficiencies

- Corridor description
- Existing highway conditions and deficiencies
- Tappan Zee Bridge - existing conditions and deficiencies
- Existing transit services in the corridor
- Existing rail freight service in the corridor



21

Slide 21. This appendix was prepared in order to comply with the NYSDOT Project Development Manual, which sets out scoping process and documentation requirements.

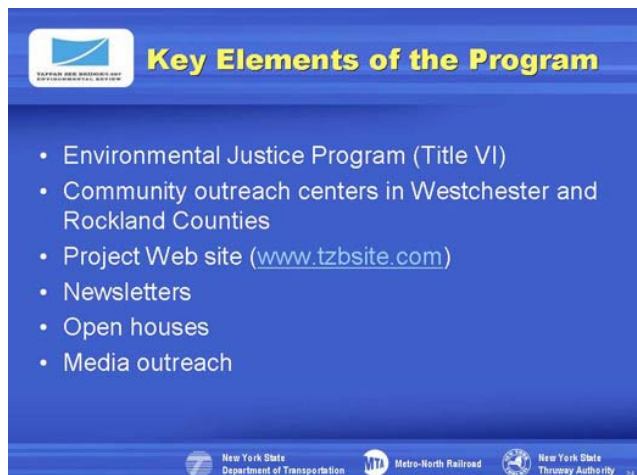
While the format of this Scoping Summary Report does not exactly mirror the NYSPDM, it does include all of the prescribed elements.



Slide 22.




Slide 23.



Slide 24.






## Environmental Justice and Title VI

- Executive Order (EO) 12898 – *Federal Actions to Address Environmental Justice in Minority Populations and Low-Income Populations* (2/11/1994) – identifies and addresses disproportionately high and adverse effects
- Title VI of the Civil Rights Act of 1964 – prohibits discrimination on the basis of race, color, & national origin in federally assisted programs/activities

New York State Department of Transportation Metro-North Railroad New York State Thruway Authority 25

Slide 25. An important aspect of this project is our Environmental Justice and Title VI Outreach Program. Federal law requires that projects of this nature not have disproportionately high and adverse effects upon certain communities, and that there be no discrimination on the basis of race, color or national origin in programs or activities that receive federal assistance.



## Executive Order 12898 – Environmental Justice

- Applicable to all federal agencies
- Minority – Black/African American, Hispanic, Asian American, American Indian & Alaskan Native
- Low-Income – persons at or below US Dept. of Health & Human Services (DHHS) poverty guidelines (\$22,050 in 2009 for family of four)
- Encourages participation of impacted citizens in all phases of decision-making
- USDOT EJ guidelines (4/15/1997) augment NEPA and Title VI

New York State Department of Transportation Metro-North Railroad New York State Thruway Authority 26


Slide 26. This applies to all federal agencies. Minority is defined as: Low income is defined as: Executive Order 12898 also encourages participation of impacted citizens in all phases of decision-making US DOT Environmental Justice guidelines augmented both the NEPA and Title VI provisions.



## DEIS Alternatives

New York State Department of Transportation Metro-North Railroad New York State Thruway Authority 27

Slide 27.



### Transit Mode Recommendation

- Develop and Analyze:
  - Full-Corridor Bus Rapid Transit for intra and inter county markets
  - Commuter Rail from Orange / Rockland to Grand Central Terminal
- Begin Tier 2 Transit NEPA process upon conclusion of this study
- Implement Full-Corridor BRT in most expedient manner
- CRT advances as circumstances and finances dictate

New York State Department of Transportation | MTA Metro-North Railroad | New York State Thruway Authority

Slide 28.



### Bridge Recommendation

Replacement of Tappan Zee Bridge

- Rehabilitation of existing bridge in-kind is not viable
- Rehabilitation options require extensive new work
- Rehabilitation options retain serious vulnerabilities
- Replacement options have high life cycle (150 yrs)

New York State Department of Transportation | MTA Metro-North Railroad | New York State Thruway Authority


Slide 29.



### A No Build




Slide 30.









## BRT Travel Ways

- **Busway**
  - Dedicated barrier-separated lanes
  - No mixed traffic
- **BRT/HOV Lanes**
  - BRT lanes shared with HOV vehicles
- **Bus Lanes**
  - Dedicated in-street lanes
  - No mixed traffic
  - Signal prioritization

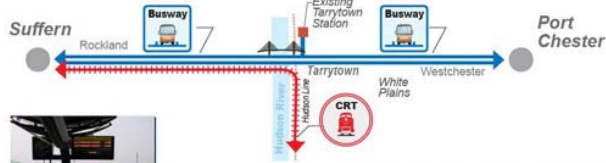

New York State  
Department of Transportation

Metro-North Railroad

New York State  
Thruway Authority




Slide 31.






B


## Busway in Rockland Busway in Westchester Rockland CRT





New York State  
Department of Transportation

Metro-North Railroad

New York State  
Thruway Authority




Slide 32.






C

## Busway in Rockland Bus Lanes in Westchester CRT in Rockland




New York State  
Department of Transportation

Metro-North Railroad

New York State  
Thruway Authority

Slide 33.

**D** **HOV Lanes in Rockland  
Busway in Westchester  
CRT in Rockland**

Suffern Rockland Tarrytown White Plains Westchester Port Chester

HOV Busway CRT

New York State Department of Transportation Metro-North Railroad New York State Thruway Authority

Slide 34.

**E** **HOV Lanes in Rockland  
Bus Lanes in Westchester  
CRT in Rockland**

Suffern Rockland Tarrytown White Plains Westchester Port Chester

HOV Bus Lanes CRT

New York State Department of Transportation Metro-North Railroad New York State Thruway Authority

Slide 35.

**Financing Study**

May 2007 – DOT managing contracts

End 2007 – initial findings

- Phase 1 Report: funding gap
- Case studies: complexity, financial expertise


Spring 2008 – Financial Advisor RFP

- 5 years (thru start of construction)
- Precluded from participating in recommended financing

New York State Department of Transportation Metro-North Railroad New York State Thruway Authority

Slide 36.








## Financing Study

Fall 2008


- Merrill Lynch wins the bid
- economic downturn

FHWA/NYS DOT agreed to utilize federal earmark funds for the first step in the Financing Study

Jan 2009 - OSC approves Merrill Lynch 5 yr contract with funding in place for Step 1

 New York State Department of Transportation
  Metro-North Railroad
  New York State Thruway Authority

Slide 37.






## Finance Status

Financial Advisor will, in 3 steps over five years:

- 1) Look at all opportunities, evaluate, and develop "Core Strategies" to refine
- 2) Support selection of financing solution(s)
- 3) Implement final financing approach

Step 1

- Management Plan approved by DOT, FHWA/FTA
- Start by looking at all possibilities
- "Core Financing Strategies" by the end of 2009

 New York State Department of Transportation
  Metro-North Railroad
  New York State Thruway Authority

Slide 38.



## Step 1 Finance Study Overall Approach

**Work Streams Allow...**



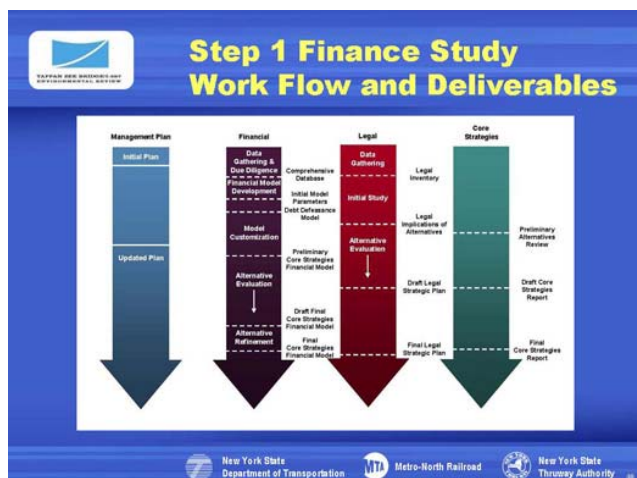
**...A Narrowing of Potential Alternatives**



Refinement & Selection

 New York State Department of Transportation
  Metro-North Railroad
  New York State Thruway Authority

Slide 39.



Slide 40.

### What Are the SAWGs?

- 5 Stakeholders' Advisory Working Groups (SAWGs):
  - >>Traffic and Transit
  - >>Land Use
  - >>Environmental
  - >>Bridge Design
  - >>Finance
- Small, hands-on groups with reps from public, private, and nonprofit sectors
- Forum for exchange of information, discussion of issues, and feedback the study team will consider
- Each group is a work in progress

Logos at the bottom: New York State Department of Transportation, MTA Metro-North Railroad, New York State Thruway Authority.

Slide 41.

### What Is Expected of SAWG Members?

- 2 - 3 hours/meeting attending working group sessions
- No specialized knowledge necessary - information to be presented and discussed in layman terms
- Interest and commitment to participate in meetings
- Speak up and participate in meeting discussions
- If you represent an organization, keep it informed of SAWG information and give us its feedback

Logos at the bottom: New York State Department of Transportation, MTA Metro-North Railroad, New York State Thruway Authority.

Slide 42.



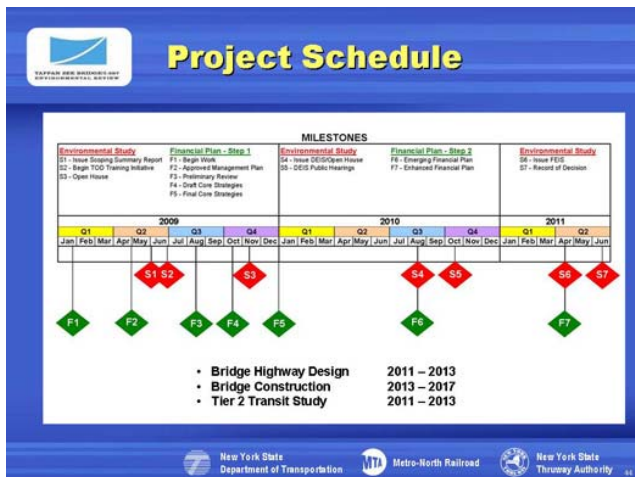
## Transit-Oriented Development Training

- Pilot program initiated to assist communities.
- Training includes fundamentals, site-specific contextual education and meaningful information.
- Collaboration with Westchester and Rockland Counties developing program content.
- Next steps:
  - Outreach to municipalities
  - Select sites as subjects for workshops.
  - Training sessions in the Fall.





Slide 43.



Slide 44.